



PIDG

TE Internal #: 2-1377174-1

Butt Splice, 22 – 16 AWG, .326 – 1.31 mm² Wire, Standard, 509 – 3260 CMA, Copper, Red, 32.13 mm [1.265 in] Length, Loose Piece, Closed Barrel, PIDG

[View on TE.com >](#)

Terminals & Splices > Splices



Splice Type: **Butt Splice**
Wire Size: **.326 – 1.31 mm²**
Sealable: **No**
Splice Features: **Standard**

Features

Product Type Features

| | |
|--|--------------------|
| Splice Accessory Type | Splice |
| Splice Type | Butt Splice |
| Sealable | No |
| Compatible With Discrete Wire Type | Stranded |
| Wire Insulation Support Retention Type | Insulation Support |

Configuration Features

| | |
|-----------------------------------|---------------|
| Compatible With Wire & Cable Type | Discrete Wire |
|-----------------------------------|---------------|

Electrical Characteristics

| | |
|-------------------|-------|
| Operating Voltage | 600 V |
|-------------------|-------|

Body Features

| | |
|---------------------|---------------|
| Product Weight | 1.489 g |
| Insulation Material | Nylon |
| Insulation Type | Pre-Insulated |
| Splice Features | Standard |



| | |
|-----------------------|-----|
| Primary Product Color | Red |
|-----------------------|-----|

Contact Features

| | |
|-----------------------|-------------------|
| Military Part Class | Class I, Class II |
| Contact Base Material | Copper |
| Barrel Type | Closed |

Termination Features

| | |
|------------------------------------|-------|
| Termination Method to Wire & Cable | Crimp |
|------------------------------------|-------|

Mechanical Attachment

| | |
|-------------------------|---------|
| Wire Insulation Support | Without |
|-------------------------|---------|

Dimensions

| | |
|--------------------------------------|--------------------|
| Wire Size | 509 – 3260 CMA |
| Compatible Insulation Diameter Range | 3.18 mm[.125 in] |
| Barrel Inside Diameter | 3.25 mm[.128 in] |
| Product Length | 32.13 mm[1.265 in] |

Usage Conditions

| | |
|-------------------|-----------------|
| Insulation Option | Fully Insulated |
|-------------------|-----------------|

Operation/Application

| | |
|------------------------------------|--------|
| Compatible With Wire Base Material | Copper |
|------------------------------------|--------|

Industry Standards

| | |
|-----------------------------|-----|
| Government Qualified Splice | Yes |
|-----------------------------|-----|

Packaging Features

| | |
|--------------------|-------------|
| Packaging Quantity | 100 |
| Packaging Method | Loose Piece |

Product Compliance

For compliance documentation, visit the product page on TE.com>

| | |
|---|--|
| EU RoHS Directive 2011/65/EU | Compliant |
| EU ELV Directive 2000/53/EC | Compliant |
| China RoHS 2 Directive MIIT Order No 32, 2016 | No Restricted Materials Above Threshold |
| EU REACH Regulation (EC) No. 1907/2006 | Current ECHA Candidate List: JAN 2025 (247) Candidate List Declared Against: JAN 2025 (247) |



| | |
|---------------------------|---|
| | Does not contain REACH SVHC |
| Halogen Content | Low Halogen - Br, Cl, F, I < 900 ppm per homogenous material. Also BFR/CFR/PVC Free |
| Solder Process Capability | Not applicable for solder process capability |

Product Compliance Disclaimer


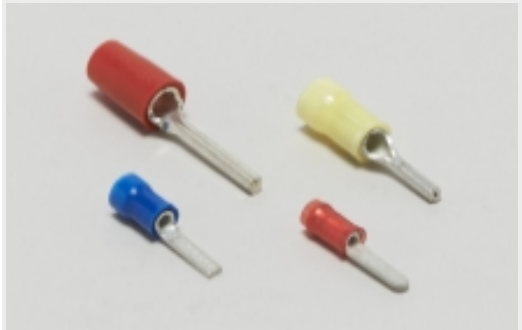


This information is provided based on reasonable inquiry of our suppliers and represents our current actual knowledge based on the information they provided. This information is subject to change. The part numbers that TE has identified as EU RoHS compliant have a maximum concentration of 0.1% by weight in homogenous materials for lead, hexavalent chromium, mercury, PBB, PBDE, DBP, BBP, DEHP, DIBP, and 0.01% for cadmium, or qualify for an exemption to these limits as defined in the Annexes of Directive 2011/65/EU (RoHS2). Finished electrical and electronic equipment products will be CE marked as required by Directive 2011/65/EU. Components may not be CE marked. Additionally, the part numbers that TE has identified as EU ELV compliant have a maximum concentration of 0.1% by weight in homogenous materials for lead, hexavalent chromium, and mercury, and 0.01% for cadmium, or qualify for an exemption to these limits as defined in the Annexes of Directive 2000/53/EC (ELV). Regarding the REACH Regulation, the information TE provides on SVHC in articles for this part number is based on the latest European Chemicals Agency (ECHA) ‘Guidance on requirements for substances in articles’ posted at this URL: <https://echa.europa.eu/guidance-documents/guidance-on-reach>

Compatible Parts



TE Part # 320559
PIDG SPLICE 22-16COMM 22-18MIL

Also in the Series | PIDG

| | | | |
|---|--|---|---|
|  |  |  |  |
| Compression Connectors(17) | Crimp Wire Pins, Tabs & Ferrules(41) | Hand Crimping Tools(2) | Knife Disconnects(11) |



Ring Terminals(588)



Spade Terminals(228)



Special Purpose Terminals(1)



Splices(41)

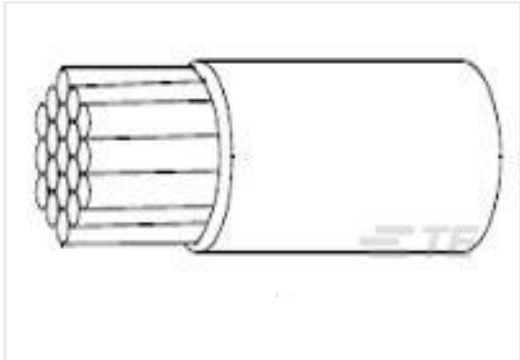
Customers Also Bought



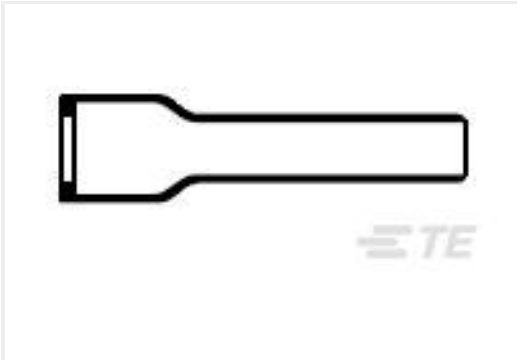
TE Part #2-2176614-5
EP 10W (SS) 10R 5% BULK BOX



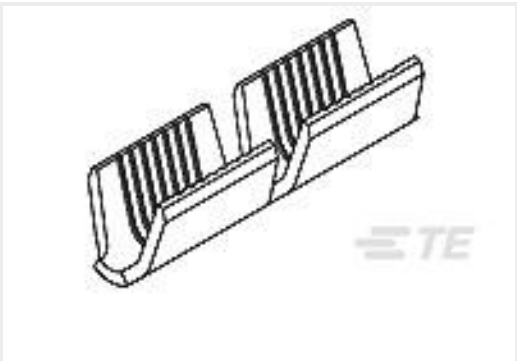
TE Part #CAT-P592-R472A
PIDG Ring Tongue Terminals



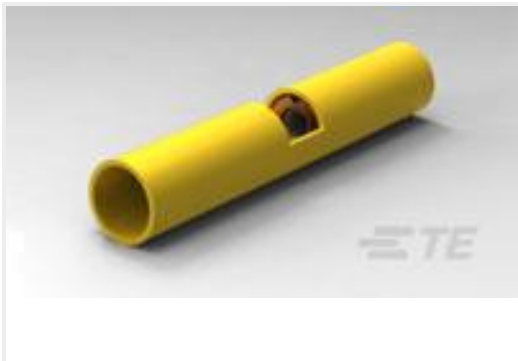
TE Part #216100-000
55A0111-20-90



TE Part #807329-000
202D232-4/42-0



TE Part #1217384-1
AMVAR SPL 600-3000 7 SERR TPBR



TE Part #320570
SPLICE BUTT PIDG 12-10



TE Part #8-1879212-6
CPF 0402 18R2 0.1% 25PPM 1K RL



TE Part #1-2329463-3
DYNAMIC 1100D HDR ASSY V 26P X TIN



TE Part #1SNG626138R0000
EP-SGL-NPT1-BL-A

Documents

Product Drawings
SMP 0-0320559-0

English

CAD Files
3D PDF

3D

Customer View Model
ENG_CVM_CVM_2-1377174-1_C1.2d_dxf.zip

2-1377174-1

Butt Splice, 22 – 16 AWG, .326 – 1.31 mm² Wire, Standard, 509 – 3260 CMA, Copper, Red, 32.13 mm [1.265 in] Length, Loose Piece, Closed Barrel, PIDG



English

Customer View Model

[ENG_CVM_CVM_2-1377174-1_C1.3d_igs.zip](#)

English

Customer View Model

[ENG_CVM_CVM_2-1377174-1_C1.3d_stp.zip](#)

English

By downloading the CAD file I accept and agree to the [Terms and Conditions](#) of use.