

100KESS6AFPW

✓ ACTIVE

Corcom KES

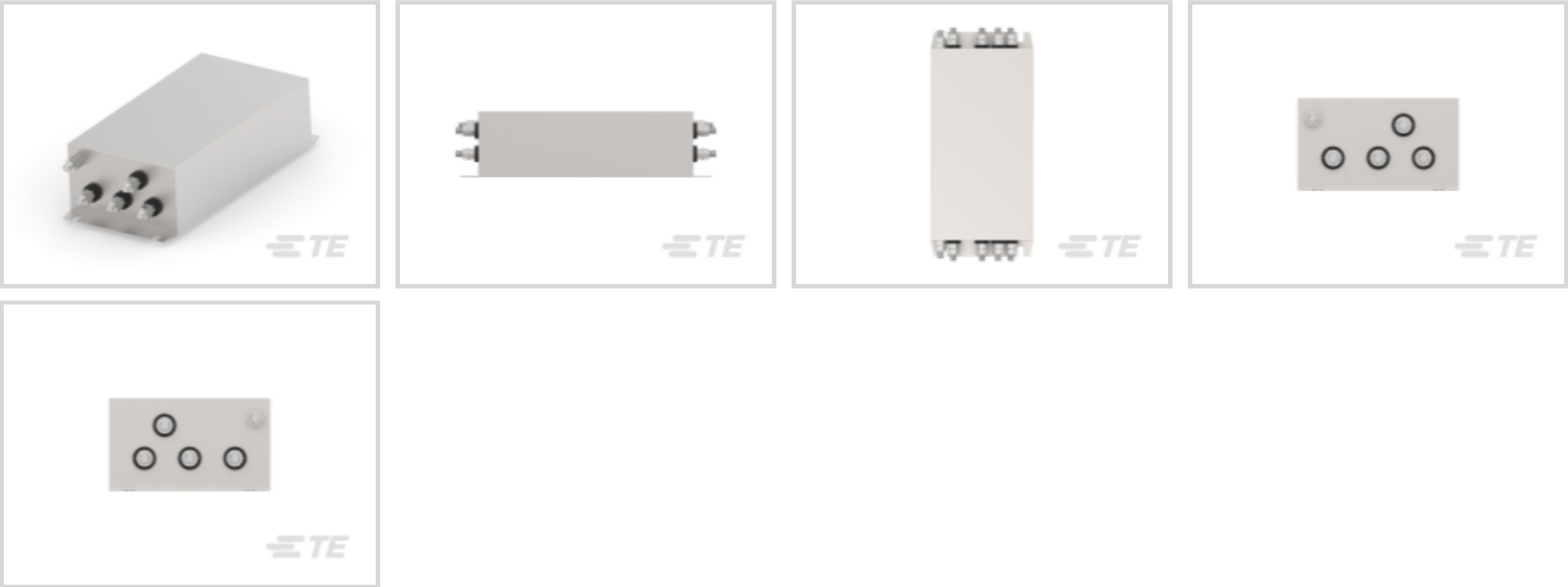
TE Internal #: 2-1609966-3

100 A 3-Phase Filter, Threaded Bolt Input, Threaded Bolt Output,
WYE (4 wire + ground), 440 VAC, Chassis Mount, Corcom KES

[View on TE.com >](#)



EMI & EMC Solutions > EMI Filters > Power Line Filters > 3-Phase Filters



Current Rating: 100 A

Input Termination Type: Threaded Bolt

Output Termination Type: Threaded Bolt

Wiring Configuration: WYE (4 wire + ground)

Operating Voltage: 440 VAC

Features

Product Type Features

Filtering Requirements	Filtered
Input Termination Type	Threaded Bolt
Output Termination Type	Threaded Bolt

Configuration Features

Wiring Configuration	WYE (4 wire + ground)
----------------------	-----------------------

Electrical Characteristics

Leakage Current (Max) (230VAC, 50Hz)	6
Current Rating	100 A
Operating Voltage	440 VAC

Mechanical Attachment

Product Mount Type	Chassis Mount
--------------------	---------------

Usage Conditions

Operating Temperature Range	-25 – 85 °C
-----------------------------	-------------



Product Compliance

For compliance documentation, visit the product page on TE.com>

EU RoHS Directive 2011/65/EU	Compliant
EU ELV Directive 2000/53/EC	Compliant
China RoHS 2 Directive MIIT Order No 32, 2016	No Restricted Materials Above Threshold
EU REACH Regulation (EC) No. 1907/2006	Current ECHA Candidate List: JAN 2025 (247) Candidate List Declared Against: JUNE 2024 (241) Does not contain REACH SVHC
Halogen Content	Not Low Halogen - contains Br or Cl > 900 ppm.
Solder Process Capability	Not reviewed for solder process capability

Product Compliance Disclaimer

This information is provided based on reasonable inquiry of our suppliers and represents our current actual knowledge based on the information they provided. This information is subject to change. The part numbers that TE has identified as EU RoHS compliant have a maximum concentration of 0.1% by weight in homogenous materials for lead, hexavalent chromium, mercury, PBB, PBDE, DBP, BBP, DEHP, DIBP, and 0.01% for cadmium, or qualify for an exemption to these limits as defined in the Annexes of Directive 2011/65/EU (RoHS2). Finished electrical and electronic equipment products will be CE marked as required by Directive 2011/65/EU. Components may not be CE marked. Additionally, the part numbers that TE has identified as EU ELV compliant have a maximum concentration of 0.1% by weight in homogenous materials for lead, hexavalent chromium, and mercury, and 0.01% for cadmium, or qualify for an exemption to these limits as defined in the Annexes of Directive 2000/53/EC (ELV). Regarding the REACH Regulation, the information TE provides on SVHC in articles for this part number is based on the latest European Chemicals Agency (ECHA) 'Guidance on requirements for substances in articles' posted at this URL: <https://echa.europa.eu/guidance-documents/guidance-on-reach>

Compatible Parts



TE Part # 2-1609966-4
KES 125A 1S NUT WYE 440VAC



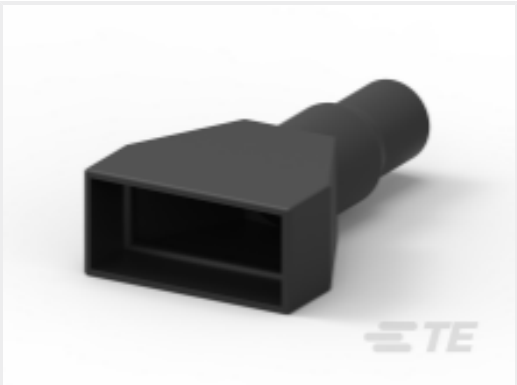
TE Part # 2-1609966-2
KES 80A 1S NUT WYE 440VAC

Also in the Series | Corcom KES

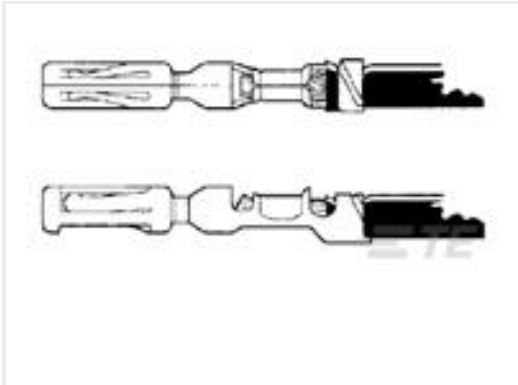


3-Phase Filters(38)

Customers Also Bought



TE Part #DRC40-BT
BOOT, 40P, 16SZ, PLG/REC, ST, BLK



TE Part #770854-3
CONTACT,AMPSEAL AU L/P



TE Part #CAT-J04-APHH
AMPSEAL PCB Right-Angle Headers



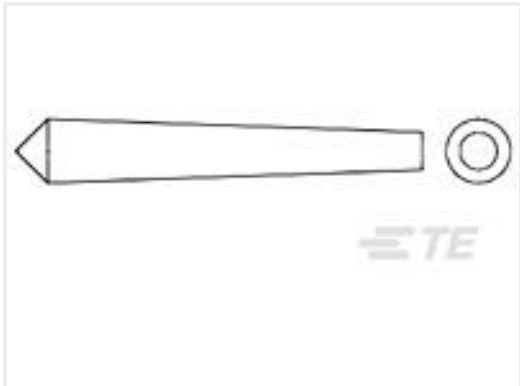
TE Part #T4010008041-000
M8,SCREW, FEMALE,S,UNSHIELD,4P, GOLD



TE Part #CAT-AM78-CH8172
AMPSEAL Receptacle Housings



TE Part #2-1609966-2
KES 80A 1S NUT WYE 440VAC



TE Part #770678-1
SEAL PLUG, AMPSEAL



TE Part #DT4P-BT
BOOT, 4P, REC, ST, GRY

Documents

Product Drawings

KES 100A 1S NUT WYE 440VAC

English

CAD Files

Customer View Model

ENG_CVM_CVM_2-1609966-3_B.3d_igs.zip

English

Customer View Model

ENG_CVM_CVM_2-1609966-3_B.3d_stp.zip

English

Customer View Model

ENG_CVM_CVM_2-1609966-3_B.2d_dxf.zip

English

3D PDF

3D

By downloading the CAD file I accept and agree to the Terms and Conditions of use.

100KESS6AFPW

100 A 3-Phase Filter, Threaded Bolt Input, Threaded Bolt Output, WYE (4 wire + ground), 440 VAC, Chassis Mount, Corcom KES



Datasheets & Catalog Pages

KES SERIES

English