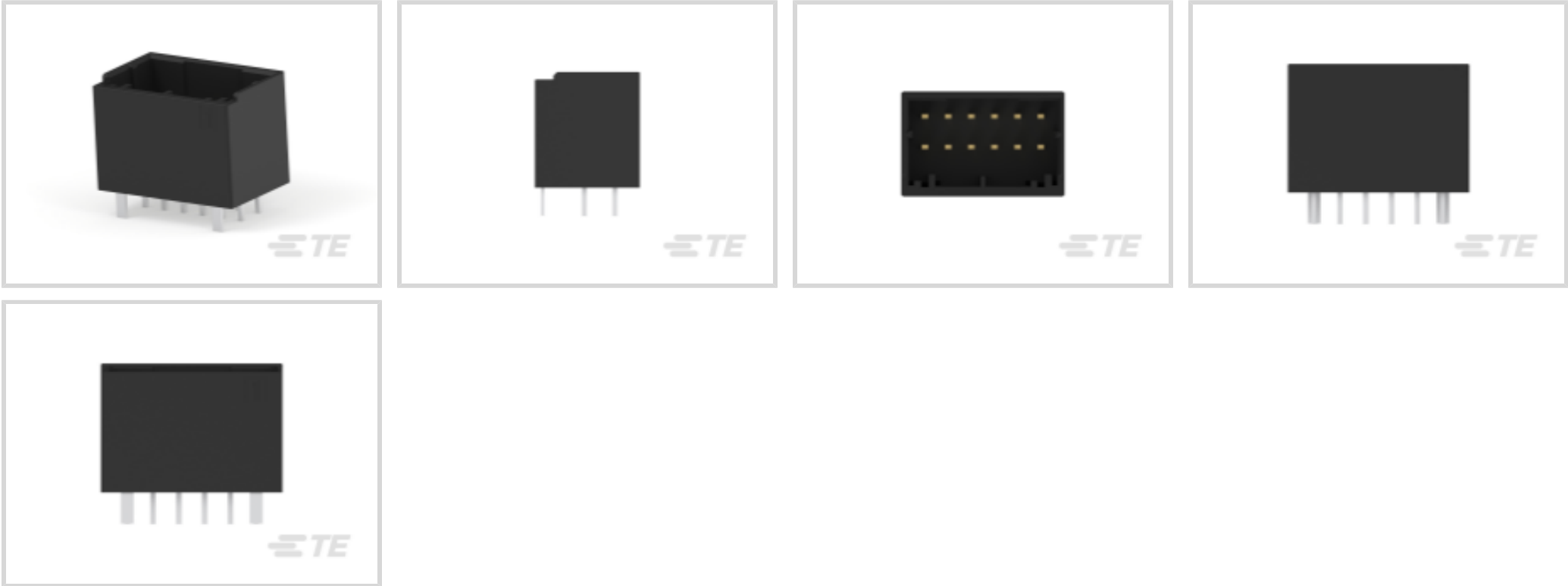




Connectors > PCB Connectors > PCB Headers & Receptacles > Header Assembly: Wire-to-Board, 5A, gold or tin plated



PCB Connector Type: PCB Mount Header

PCB Mount Orientation: Vertical

Connector System: Wire-to-Board

Number of Positions: 12

Number of Rows: 2

All Header Assembly: Wire-to-Board, 5A, gold or tin plated (89)

Features

Product Type Features

PCB Connector Type	PCB Mount Header
Connector System	Wire-to-Board
Header Type	Fully Shrouded
Sealable	No
Connector & Contact Terminates To	Printed Circuit Board
Connector Product Type	Connector Assembly

Configuration Features

PCB Mount Orientation	Vertical
Number of Positions	12
Number of Rows	2

Body Features

Primary Product Color	Black
-----------------------	-------

Contact Features



Contact Base Material	Copper Alloy
Contact Mating Area Plating Material Thickness	.381 μm[15 μin]
Contact Mating Area Plating Material	Gold (Au)
Contact Type	Pin
Contact Current Rating (Max)	5 A

Termination Features

Termination Method to PCB	Through Hole - Solder
---------------------------	-----------------------

Mechanical Attachment

Mating Retention	With
PCB Mount Retention Type	Retention Leg
Mating Alignment Type	Keyed
PCB Mount Retention	With
PCB Mount Alignment	Without
Connector Mounting Type	Board Mount
Mating Alignment	With

Housing Features

Housing Material	Polyester GF
Centerline (Pitch)	2.5 mm[.099 in]

Usage Conditions

Operating Temperature (Max)	105 °C[221 °F]
Operating Temperature Range	-55 – 105 °C[-67 – 221 °F]

Operation/Application

Circuit Application	Power & Signal
---------------------	----------------

Industry Standards

UL Flammability Rating	UL 94V-0
------------------------	----------

Packaging Features

Packaging Quantity	26
Packaging Method	Box, Tube

Product Compliance

For compliance documentation, visit the product page on TE.com>

EU RoHS Directive 2011/65/EU	Compliant
------------------------------	-----------



EU ELV Directive 2000/53/EC	Compliant
China RoHS 2 Directive MIIT Order No 32, 2016	No Restricted Materials Above Threshold
EU REACH Regulation (EC) No. 1907/2006	Current ECHA Candidate List: JAN 2025 (247) Candidate List Declared Against: JAN 2025 (247) Does not contain REACH SVHC
Halogen Content	Not Low Halogen - contains Br or Cl > 900 ppm.
Solder Process Capability	Wave solder capable to 265°C

Product Compliance Disclaimer

This information is provided based on reasonable inquiry of our suppliers and represents our current actual knowledge based on the information they provided. This information is subject to change. The part numbers that TE has identified as EU RoHS compliant have a maximum concentration of 0.1% by weight in homogenous materials for lead, hexavalent chromium, mercury, PBB, PBDE, DBP, BBP, DEHP, DIBP, and 0.01% for cadmium, or qualify for an exemption to these limits as defined in the Annexes of Directive 2011/65/EU (RoHS2). Finished electrical and electronic equipment products will be CE marked as required by Directive 2011/65/EU. Components may not be CE marked. Additionally, the part numbers that TE has identified as EU ELV compliant have a maximum concentration of 0.1% by weight in homogenous materials for lead, hexavalent chromium, and mercury, and 0.01% for cadmium, or qualify for an exemption to these limits as defined in the Annexes of Directive 2000/53/EC (ELV). Regarding the REACH Regulation, the information TE provides on SVHC in articles for this part number is based on the latest European Chemicals Agency (ECHA) 'Guidance on requirements for substances in articles' posted at this URL: <https://echa.europa.eu/guidance-documents/guidance-on-reach>

Compatible Parts




TE Part # 2-2349949-6
D1200D REC HSG 12P Y BLACK PA9T GF33




TE Part # 2-1827864-6
DYNAMIC 1200D REC HSG 12P Y BLACK


Also in the Series | Dynamic 1000 Series




Connector Contacts(40)



Connector Hardware(3)



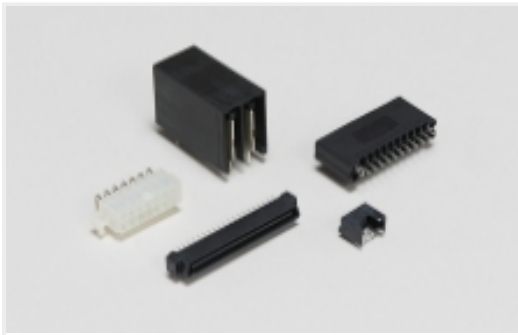
Power Contacts(9)



Rectangular Connector Housings(129)



Rectangular Power Connectors(115)

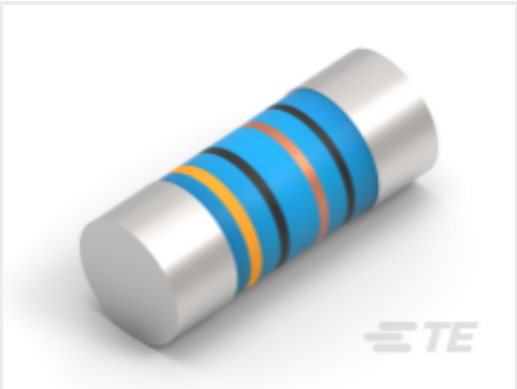


Standard Rectangular Connectors(130)



Wire-to-Board Connector Assemblies & Housings(24)

Customers Also Bought



TE Part #2176316-2
MELF SMA_A 120R 0.1% 15PPM 0207 1W



TE Part #CAT-D9934-A66B
Header Assembly: Wire-to-Board, 5A, gold plated



TE Part #2-2326092-2
DYNAMIC D-5 V-HDR ASSY 6P AU0.38 YY



TE Part #2-1827872-0
DYNAMIC 1100D HDR ASSY V 40PY BLACK GOLD



TE Part #CAT-D9934-A15F
Header Assembly: Wire-to-Board, 5A, gold or tin plated

Documents

Product Drawings

DYNAMIC 1200D HDR ASSY V 12PY BLACK GOLD

English

CAD Files

3D PDF

3D

Customer View Model

ENG_CVM_CVM_2-1827875-6_C.2d_dxf.zip

English

Customer View Model

ENG_CVM_CVM_2-1827875-6_C.3d_igs.zip

English

Customer View Model

ENG_CVM_CVM_2-1827875-6_C.3d_stp.zip

English

By downloading the CAD file I accept and agree to the Terms and Conditions of use.



Product Specifications

Application Specification

English

Agency Approvals

UL

English