



Connectors > PCB Connectors > PCB Headers & Receptacles



PCB Connector Type: **PCB Mount Header**

PCB Mount Orientation: **Vertical**

Connector System: **Wire-to-Board**

Number of Positions: **2**

Number of Rows: **1**

Features

Product Type Features

Mixed & Hybrid Header	No
Connector Shape	Rectangular
PCB Connector Type	PCB Mount Header
Connector System	Wire-to-Board
Header Type	Fully Shrouded
Sealable	No
Connector & Contact Terminates To	Printed Circuit Board
Connector Product Type	Connector Assembly

Configuration Features

Number of Columns	2
Number of Loaded Positions	2
Number of Signal Positions	2
Connector Contact Load Condition	Fully Loaded
PCB Mount Orientation	Vertical



Number of Positions	2
Number of Rows	1

Electrical Characteristics

Operating Voltage	50 VDC
-------------------	--------

Body Features

Connector & Keying Code	C
Primary Product Color	Red

Contact Features

Contact Underplating Material	Nickel
Contact Underplating Material Thickness	1.27 µm[50 µin]
Contact Size	.5mm
Contact Mating Area Plating Material Thickness	1 µm[39.37 µin]
Mating Square Post Dimension	.5 mm[.02 in]
PCB Contact Termination Area Plating Material Thickness	1 µm[39.37 µin]
Contact Shape & Form	Square
Contact Layout	Inline
Contact Mating Area Length	3.8 mm[.149 in]
Contact Base Material	Brass
PCB Contact Termination Area Plating Material	Tin
Contact Mating Area Plating Material	Tin (Sn)
Contact Type	Tab
Contact Current Rating (Max)	3 A

Termination Features

Termination Post & Tail Length	3 mm, 16.85 mm[.118 in][.663 in]
Square Termination Post & Tail Dimension	.5 mm[.02 in]
Termination Method to PCB	Through Hole - Solder

Mechanical Attachment

Panel Mount Feature	Without
Mating Retention	Without
Mating Alignment Type	Keyed
PCB Mount Retention	Without
PCB Mount Alignment	Without



Connector Mounting Type	Board Mount
Mating Alignment	With

Housing Features

Mating Entry Location	Top
Housing Material	Nylon 66 GF
Centerline (Pitch)	2.5 mm[.098 in]

Dimensions

PCB Thickness (Recommended)	1.6 mm, 2 mm[.062 in][.078 in]
Connector Length	7.5 mm[.295 in]

Usage Conditions

Operating Temperature (Max)	105 °C[221 °F]
Operating Temperature Range	-30 – 105 °C[-22 – 221 °F]

Operation/Application

Circuit Application	Signal
---------------------	--------

Industry Standards

Glow Wire Rating	Standard Part - Not Glow Wire
UL Flammability Rating	UL 94V-0

Packaging Features

Packaging Quantity	900
Packaging Method	Carton

Product Compliance

For compliance documentation, visit the product page on TE.com>

EU RoHS Directive 2011/65/EU	Compliant
EU ELV Directive 2000/53/EC	Not Yet Reviewed
China RoHS 2 Directive MIIT Order No 32, 2016	No Restricted Materials Above Threshold
EU REACH Regulation (EC) No. 1907/2006	Current ECHA Candidate List: JAN 2025 (247) Candidate List Declared Against: JAN 2019 (197) SVHC > Threshold: Not Yet Reviewed
Halogen Content	Not Yet Reviewed for halogen content
Solder Process Capability	Not reviewed for solder process capability




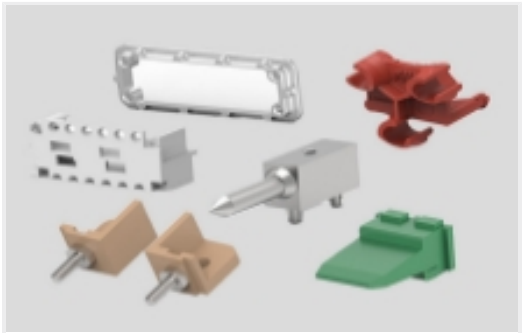


Product Compliance Disclaimer

This information is provided based on reasonable inquiry of our suppliers and represents our current actual knowledge based on the information they provided. This information is subject to change. The part numbers that TE has identified as EU RoHS compliant have a maximum concentration of 0.1% by weight in homogenous materials for lead, hexavalent chromium, mercury, PBB, PBDE, DBP, BBP, DEHP, DIBP, and 0.01% for cadmium, or qualify for an exemption to these limits as defined in the Annexes of Directive 2011/65/EU (RoHS2). Finished electrical and electronic equipment products will be CE marked as required by Directive 2011/65/EU. Components may not be CE marked. Additionally, the part numbers that TE has identified as EU ELV compliant have a maximum concentration of 0.1% by weight in homogenous materials for lead, hexavalent chromium, and mercury, and 0.01% for cadmium, or qualify for an exemption to these limits as defined in the Annexes of Directive 2000/53/EC (ELV). Regarding the REACH Regulations, TE’s information on SVHC in articles for this part number is still based on the European Chemical Agency (ECHA) ‘Guidance on requirements for substances in articles’(Version: 2, April 2011), applying the 0.1% weight on weight concentration threshold at the finished product level. TE is aware of the European Court of Justice ruling of September 10th, 2015 also known as O5A (Once An Article Always An Article) stating that, in case of ‘complex object’, the threshold for a SVHC must be applied to both the product as a whole and simultaneously to each of the articles forming part of its composition. TE has evaluated this ruling based on the new ECHA “Guidance on requirements for substances in articles” (June 2017, version 4.0) and will be updating its statements accordingly.

Compatible Parts

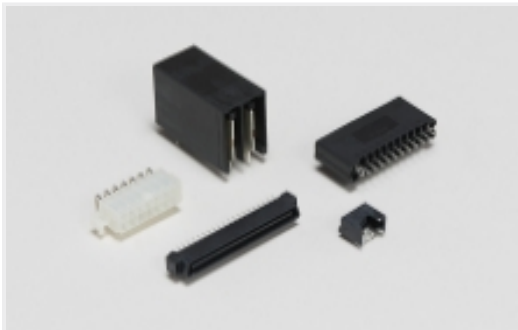
 <p>TE Part # CAT-G7534A-P729A Glow Wire Sig GRACE INERTIA Plug</p>	 <p>TE Part # 2-1971794-1 NEW GI CONN2.5 TPA 2P BLACK</p>	 <p>TE Part # 2232905-1 EP 2.5 LIF RCPT CONTACT, 26-22 AWG</p>	 <p>TE Part # 2232983-1 EP 2.5 LIF RCPT CONTACT, 24-20 AWG</p>
 <p>TE Part # 1744423-1 EP 2.5 RCPT CONTACT, 24-20 AWG</p>	 <p>TE Part # 2-1971793-5 NEW GI CONN2.5 PLUG HSG 2P BLK</p>		

Also in the Series | GRACE INERTIA 2.5

 <p>Connector Contacts(6)</p>	 <p>Connector Hardware(7)</p>	 <p>Power Contacts(2)</p>	 <p>Rectangular Connector Housings(69)</p>
--	---	--	---



Rectangular Power Connectors(20)



Standard Rectangular Connectors(69)



Wire-to-Board Connector Assemblies & Housings(27)

Customers Also Bought



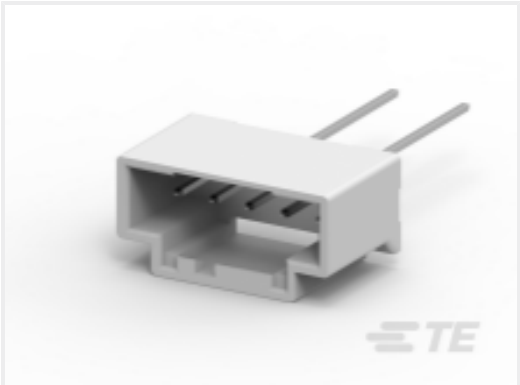
TE Part #2-2141600-2
TAB 2.8x0.8 CONTACT CF SRC Ag



TE Part #1-1649357-3
RTH34012



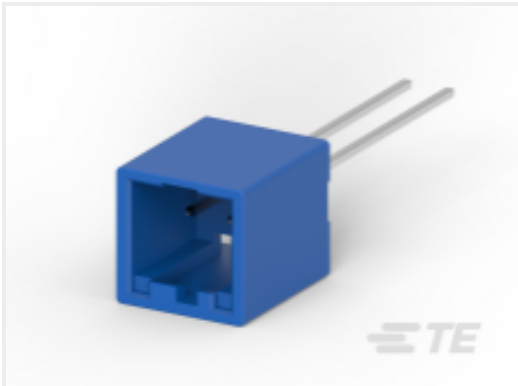
TE Part #2-1971800-4
NEW GI CONN2.5 HDR ASMBLY 2P YLW D1.5



TE Part #5-2232546-1
GI2.5 HDR ASS 5P NC NO BOSS TAPE



TE Part #2027395-5
T9VV1K15-12S



TE Part #2-2232546-2
GI2.5 HDR ASS 2P BL NO BOSS TAPE

Documents

Product Drawings

GI2.5 HDR ASS 2P RED NO BOSS TAPE

English

CAD Files

3D PDF

3D

Customer View Model

ENG_CVM_CVM_2-2232546-3_A.2d_dxf.zip

English

Customer View Model

ENG_CVM_CVM_2-2232546-3_A.3d_igs.zip

English

Customer View Model

ENG_CVM_CVM_2-2232546-3_A.3d_stp.zip

English

By downloading the CAD file I accept and agree to the Terms and Conditions of use.



Product Specifications

Product Specification

English

Agency Approvals

UL Report

English