



Sensors > Pressure Sensors > Board Mount Pressure Sensors



Pressure Sensor Type: **Digital Pressure and Altimeter Sensor Modules**

Pressure Type: **Absolute**

Proof Pressure Range: **10 bar**

Output Signal Type: **24 bit ADC**

Pressure Accuracy: **±0.5mbar**

Features

Product Type Features

Sensor Package	Surface Mountable
Pressure Sensor Type	Digital Pressure and Altimeter Sensor Modules
Pressure Type	Absolute

Electrical Characteristics

Supply Voltage Range	1.5 – 3.6 V
----------------------	-------------

Dimensions

Product Width	3.3 mm[.13 in]
Product Length	3.3 mm[.129 in]
Product Height	1.7 mm[.066 in]

Usage Conditions

Operating Temperature Range	-20 – 85 °C[-4 – 185 °F]
-----------------------------	--------------------------

Operation/Application

Output Interface	I2C
Resolution	.016
Proof Pressure Range	10 bar
Output Signal Type	24 bit ADC



Pressure Accuracy	±0.5mbar
-------------------	----------

Product Compliance

For compliance documentation, visit the product page on TE.com>

EU RoHS Directive 2011/65/EU	Compliant with Exemptions
EU ELV Directive 2000/53/EC	Out of Scope
China RoHS 2 Directive MIIT Order No 32, 2016	Restricted Materials Above Threshold
EU REACH Regulation (EC) No. 1907/2006	Current ECHA Candidate List: JAN 2025 (247) Candidate List Declared Against: JUNE 2023 (235) Does not contain REACH SVHC
Halogen Content	Not Yet Reviewed for halogen content
Solder Process Capability	Not reviewed for solder process capability

Product Compliance Disclaimer

This information is provided based on reasonable inquiry of our suppliers and represents our current actual knowledge based on the information they provided. This information is subject to change. The part numbers that TE has identified as EU RoHS compliant have a maximum concentration of 0.1% by weight in homogenous materials for lead, hexavalent chromium, mercury, PBB, PBDE, DBP, BBP, DEHP, DIBP, and 0.01% for cadmium, or qualify for an exemption to these limits as defined in the Annexes of Directive 2011/65/EU (RoHS2). Finished electrical and electronic equipment products will be CE marked as required by Directive 2011/65/EU. Components may not be CE marked. Additionally, the part numbers that TE has identified as EU ELV compliant have a maximum concentration of 0.1% by weight in homogenous materials for lead, hexavalent chromium, and mercury, and 0.01% for cadmium, or qualify for an exemption to these limits as defined in the Annexes of Directive 2000/53/EC (ELV). Regarding the REACH Regulation, the information TE provides on SVHC in articles for this part number is based on the latest European Chemicals Agency (ECHA) ‘Guidance on requirements for substances in articles’ posted at this URL: <https://echa.europa.eu/guidance-documents/guidance-on-reach>

Compatible Parts

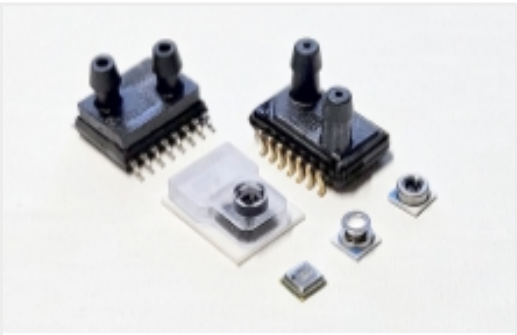


TE Part # 20000979-00  
MS5837-02BA21 2BA LS T&R  
PRESSURE SEN



TE Part # 20008669-50  
MS5839-02BA36 CL RESISTANT LS  
T&R SEN

Also in the Series | MEAS MS5840

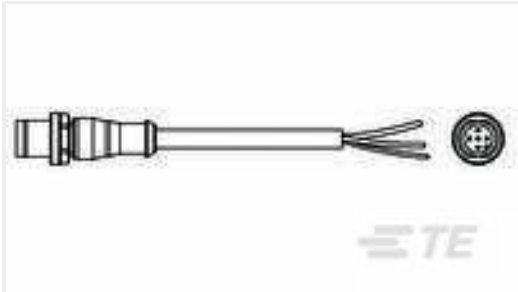


Board Mount Pressure Sensors(1)

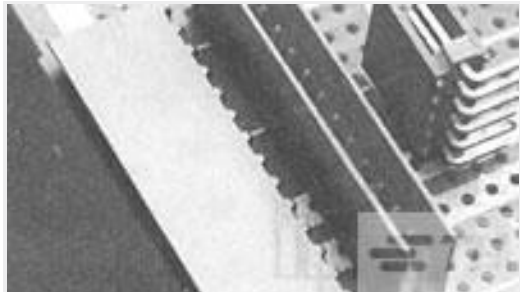
Customers Also Bought



TE Part #2-1734741-8  
.5 FPC VT ZIF Type-B 28 CONT



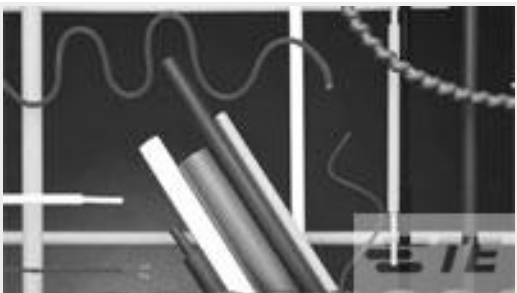
TE Part #1-2273034-1  
M12 x 1.0 straight plug pigt A



TE Part #281695-6  
HEADER HE14 STRAIGHT 6 P



TE Part #4-1825059-1  
ADF08ST04=DIP SWT,FLUSH,SMT-GW



TE Part #5069702009  
CGPT-3.2/1.6-X-STK



TE Part #175150-1  
UNIVERSAL POWER CONN TAB



TE Part #640931-1  
RECEPT,PIDG FASTON 16-14 110



TE Part #1SNG601055R0000  
EP-SG-M20-LGR-C



TE Part #3-1879494-3  
CRGH0603 5% 22R 0.2W



TE Part #T4110411051-000  
M12 F, 5P GOLD, B\_CODE S  
SHIELDED PG7

Documents

CAD Files

3D PDF

3D

Customer View Model

ENG\_CVM\_CVM\_20000980-00\_1.2d\_dxf.zip

English

Customer View Model

ENG\_CVM\_CVM\_20000980-00\_1.3d\_igs.zip

20000980-00

Digital Pressure and Altimeter Sensor Modules, Absolute, 24 bit ADC, ±0.5mbar  
Pressure Accuracy, 1.5 – 3.6 V Supply Voltage Range, MEAS MS5840



English

Customer View Model

[ENG\\_CVM\\_CVM\\_20000980-00\\_1.3d\\_stp.zip](#)

English

By downloading the CAD file I accept and agree to the [Terms and Conditions](#) of use.

Datasheets & Catalog Pages

[MS5840-02BA](#)

English