



Connectors > Connector Accessories > Connector Caps & Covers



Connector Cover Type: **Shield & Strain Relief**

Cable Exit Angle: **180°**

Primary Product Material: **Aluminum Alloy**

Number of Positions: **16, 20, 34**

Operating Temperature (Max): **150 °C [302 °F]**

Features

Product Type Features

Connector Cover Type	Shield & Strain Relief
----------------------	------------------------

Configuration Features

Number of Positions	16, 20, 34
---------------------	------------

Body Features

Cable Exit Angle	180°
Primary Product Material	Aluminum Alloy

Mechanical Attachment

Thread Size	4-40
-------------	------

Dimensions

Product Width	20.78 mm[.818 in]
Compatible Cable Diameter Range	13.84 mm[.545 in]
Product Length	44.83 mm[1.765 in]
Product Height	50.8 mm[1.999 in]

Usage Conditions



Operating Temperature (Max)	150 °C[302 °F]
Operating Temperature Range	-55 – 150 °C[-67 – 302 °F]

Packaging Features

Packaging Method	Bag
Packaging Quantity	1

Product Compliance

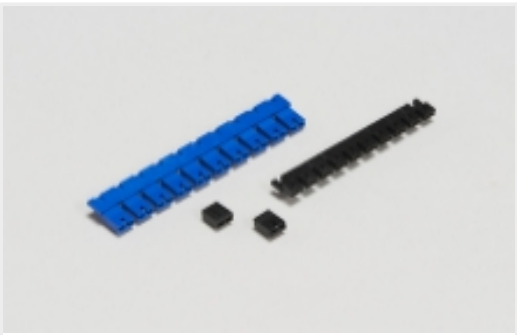
For compliance documentation, visit the product page on [TE.com](#)>

EU RoHS Directive 2011/65/EU	Compliant
EU ELV Directive 2000/53/EC	Compliant
China RoHS 2 Directive MIIT Order No 32, 2016	No Restricted Materials Above Threshold
EU REACH Regulation (EC) No. 1907/2006	Current ECHA Candidate List: JAN 2025 (247) Candidate List Declared Against: JAN 2025 (247) Does not contain REACH SVHC
Halogen Content	Low Halogen - Br, Cl, F, I < 900 ppm per homogenous material. Also BFR/CFR/PVC Free
Solder Process Capability	Not applicable for solder process capability

Product Compliance Disclaimer

This information is provided based on reasonable inquiry of our suppliers and represents our current actual knowledge based on the information they provided. This information is subject to change. The part numbers that TE has identified as EU RoHS compliant have a maximum concentration of 0.1% by weight in homogenous materials for lead, hexavalent chromium, mercury, PBB, PBDE, DBP, BBP, DEHP, DIBP, and 0.01% for cadmium, or qualify for an exemption to these limits as defined in the Annexes of Directive 2011/65/EU (RoHS2). Finished electrical and electronic equipment products will be CE marked as required by Directive 2011/65/EU. Components may not be CE marked. Additionally, the part numbers that TE has identified as EU ELV compliant have a maximum concentration of 0.1% by weight in homogenous materials for lead, hexavalent chromium, and mercury, and 0.01% for cadmium, or qualify for an exemption to these limits as defined in the Annexes of Directive 2000/53/EC (ELV). Regarding the REACH Regulation, the information TE provides on SVHC in articles for this part number is based on the latest European Chemicals Agency (ECHA) ‘Guidance on requirements for substances in articles’ posted at this URL: <https://echa.europa.eu/guidance-documents/guidance-on-reach>

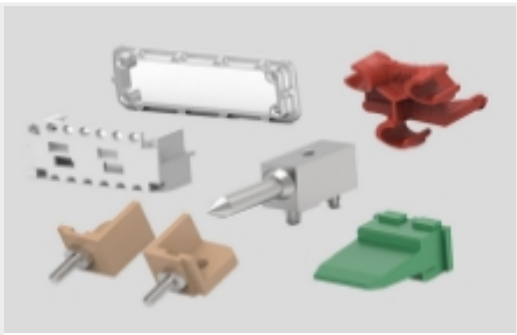
Also in the Series | [AMP M Series](#)



Board-to-Board Jumpers & Shunts(5)



Connector Contacts(51)



Connector Hardware(47)



Power Contacts(51)



Rectangular Connector Housings(77)

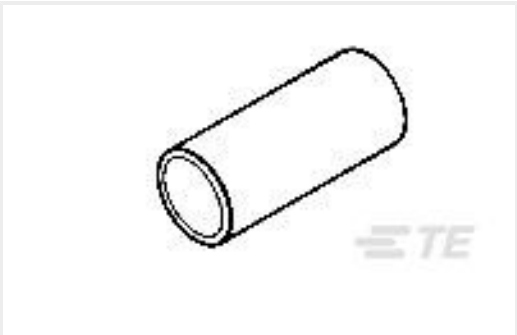


Rectangular Power Connectors(82)



Standard Rectangular Connectors(81)

Customers Also Bought



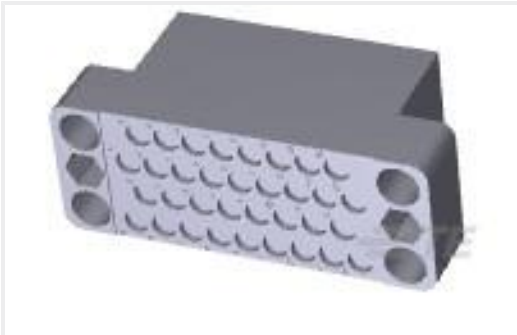
TE Part #1-332057-0
FERRULE COAXICON SUB-MIN



TE Part #66331-7
III+ SKT,24-20,15AU/FL,STRIP



TE Part #201413-1
JACKSCREW ASSY. SERIES "M"



TE Part #1-201357-1
MALE BLOCK 34 PL

Documents

Product Drawings
34 PL. SHIELD ASSY.

English

CAD Files
3D PDF

3D

Customer View Model
ENG_CVM_CVM_200517-1_Z.2d_dxf.zip

English

Customer View Model
ENG_CVM_CVM_200517-1_Z.3d_igs.zip

English

Customer View Model
ENG_CVM_CVM_200517-1_Z.3d_stp.zip

English

By downloading the CAD file I accept and agree to the Terms and Conditions of use.



Datasheets & Catalog Pages

M_SERIES_PIN_AND_SOCKET_CONNECTORS

English

Instruction Sheets

Instruction Sheet (U.S.)

English

Agency Approvals

Agency Approval Document

English