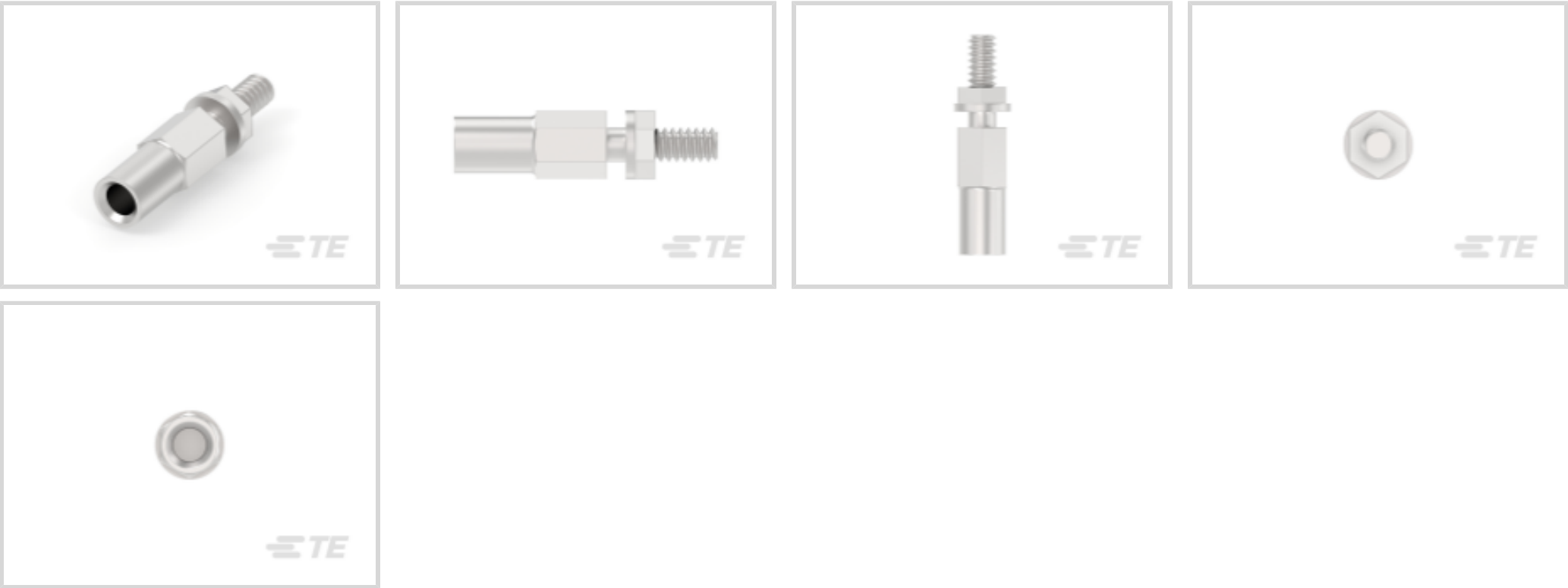




Connectors > Connector Accessories > Connector Hardware



Connector Hardware Accessory Type: **Female Jackscrew**

Primary Product Material: **Stainless Steel**

Operating Temperature (Max): **150 °C [302 °F]**

Operating Temperature Range: **-55 – 150 °C [-67 – 302 °F]**

Hardware Accessory Function: **Latching, Locking & Retention**

Features

Product Type Features

Connector Hardware Accessory Type	Female Jackscrew
Hardware Accessory Function	Latching, Locking & Retention

Body Features

Primary Product Material	Stainless Steel
--------------------------	-----------------

Mechanical Attachment

Hardware Type Included	Nuts and Lockwashers
Thread Size	6-32 [M3.5 x .6]

Dimensions

Product Width	5.72 mm[.225 in]
Product Length	21.26 mm[.837 in]
Product Height	5.72 mm[.225 in]

Usage Conditions

Operating Temperature (Max)	150 °C[302 °F]
Operating Temperature Range	-55 – 150 °C[-67 – 302 °F]

Packaging Features



Packaging Method	Bag
Packaging Quantity	100

Product Compliance

[For compliance documentation, visit the product page on TE.com>](#)

EU RoHS Directive 2011/65/EU	Compliant
EU ELV Directive 2000/53/EC	Compliant
China RoHS 2 Directive MIIT Order No 32, 2016	No Restricted Materials Above Threshold
EU REACH Regulation (EC) No. 1907/2006	Current ECHA Candidate List: JAN 2025 (247) Candidate List Declared Against: JAN 2025 (247) Does not contain REACH SVHC
Halogen Content	Low Halogen - Br, Cl, F, I < 900 ppm per homogenous material. Also BFR/CFR/PVC Free
Solder Process Capability	Not applicable for solder process capability

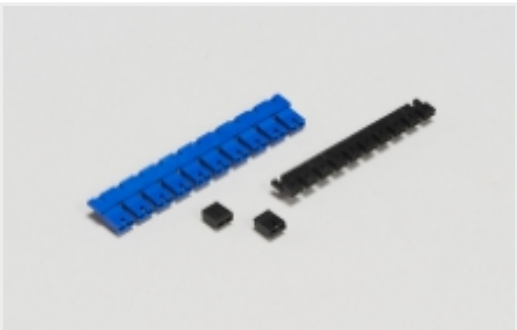
Product Compliance Disclaimer

This information is provided based on reasonable inquiry of our suppliers and represents our current actual knowledge based on the information they provided. This information is subject to change. The part numbers that TE has identified as EU RoHS compliant have a maximum concentration of 0.1% by weight in homogenous materials for lead, hexavalent chromium, mercury, PBB, PBDE, DBP, BBP, DEHP, DIBP, and 0.01% for cadmium, or qualify for an exemption to these limits as defined in the Annexes of Directive 2011/65/EU (RoHS2). Finished electrical and electronic equipment products will be CE marked as required by Directive 2011/65/EU. Components may not be CE marked. Additionally, the part numbers that TE has identified as EU ELV compliant have a maximum concentration of 0.1% by weight in homogenous materials for lead, hexavalent chromium, and mercury, and 0.01% for cadmium, or qualify for an exemption to these limits as defined in the Annexes of Directive 2000/53/EC (ELV). Regarding the REACH Regulation, the information TE provides on SVHC in articles for this part number is based on the latest European Chemicals Agency (ECHA) 'Guidance on requirements for substances in articles' posted at this URL: <https://echa.europa.eu/guidance-documents/guidance-on-reach>

Compatible Parts



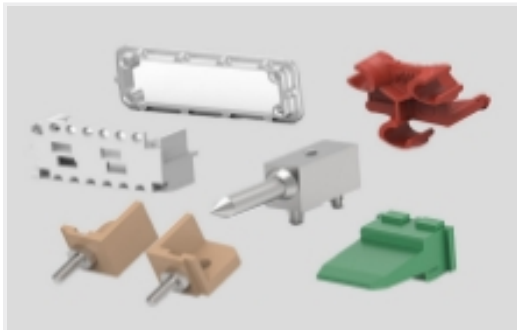
Also in the Series | AMP M Series



Board-to-Board Jumpers & Shunts(5)



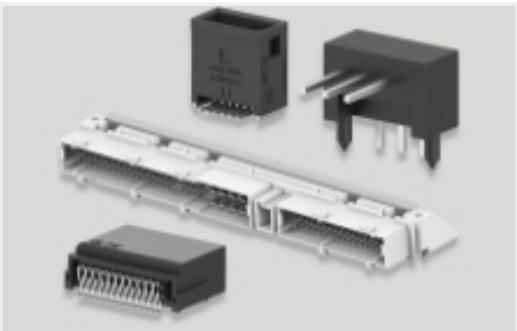
Connector Caps & Covers(14)



Connector Hardware(47)



Connector Strain Relief(13)



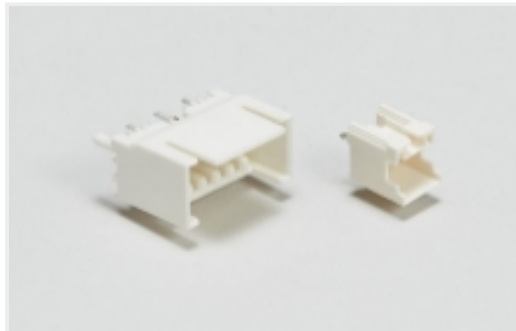
PCB Headers & Receptacles(9)



Rack & Panel Connectors(1)



Rectangular Power Connectors(82)



Wire-to-Board Headers & Receptacles (1)

Customers Also Bought



TE Part #201368-4
75 PL. EXTERNAL PIN HOOD



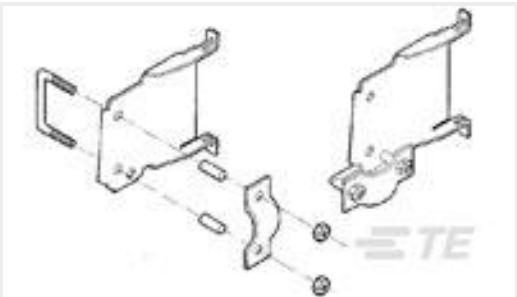
TE Part #201047-2
SERIES "M" ST. STL. GUIDE SOC.



TE Part #1-201046-2
SERIES "M" MIN RECT GUIDE PIN



TE Part #207234-1
UNASSM JS KIT,M SERIES



TE Part #201848-5
STRAIN RELIEF CLAMP UNASSEM.



TE Part #1-200833-1
SERIES"M" GUIDE PIN ST. STL.



TE Part #207235-1
UNASSM JS KIT,M SERIES



TE Part #201369-4
75 POS. PIN HOOD



TE Part #201501-1
SPIROL PIN



TE Part #201092-4
SER. "M" JACKSCREW STUD KIT

Documents



Product Drawings

SERIES"M" JACKSCREW SOCKET ASS

English

CAD Files

Customer View Model

ENG_CVM_CVM_201089-4_J.2d_dxf.zip

English

3D PDF

3D

Customer View Model

ENG_CVM_CVM_201089-4_J.3d_igs.zip

English

Customer View Model

ENG_CVM_CVM_201089-4_J.3d_stp.zip

English

By downloading the CAD file I accept and agree to the [Terms and Conditions](#) of use.

Datasheets & Catalog Pages

M_SERIES_PIN_AND_SOCKET_CONNECTORS

English