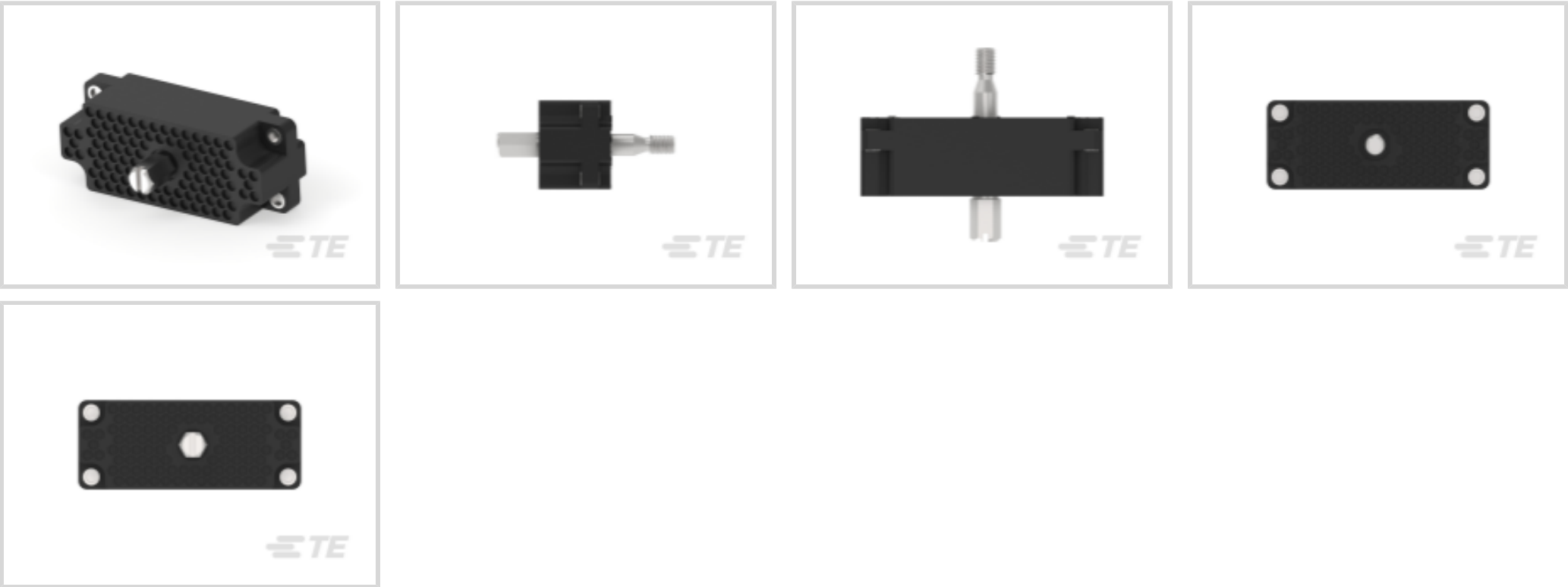




Connectors > Rectangular Connectors > Standard Rectangular Connectors



Connector Product Type: **Housing**  
Connector & Housing Type: **Plug**  
Termination Method to Wire & Cable: **Crimp**  
Connector System: **Cable-to-Cable, Cable-to-Panel**  
Contact Retention Within Housing: **With**

Features

Product Type Features

|                                   |                                |
|-----------------------------------|--------------------------------|
| Connector Product Type            | Housing                        |
| Connector & Housing Type          | Plug                           |
| Connector System                  | Cable-to-Cable, Cable-to-Panel |
| Sealable                          | No                             |
| Connector & Contact Terminates To | Wire & Cable                   |

Configuration Features

|                            |     |
|----------------------------|-----|
| Number of Signal Positions | 104 |
| Number of Power Positions  | 104 |
| Number of Positions        | 104 |
| Number of Rows             | 8   |

Electrical Characteristics

|                   |         |
|-------------------|---------|
| Operating Voltage | 250 VAC |
|-------------------|---------|

Body Features

|                       |       |
|-----------------------|-------|
| Primary Product Color | Black |
|-----------------------|-------|



Contact Features

|                                  |      |
|----------------------------------|------|
| Contact Type                     | Pin  |
| Contact Retention Within Housing | With |
| Contact Current Rating (Max)     | 13 A |

Termination Features

|                                    |       |
|------------------------------------|-------|
| Termination Method to Wire & Cable | Crimp |
|------------------------------------|-------|

Mechanical Attachment

|                          |             |
|--------------------------|-------------|
| Strain Relief            | Without     |
| Panel Mount Feature      | With        |
| Panel Mount Feature Type | Screw Mount |
| Connector Mounting Type  | Panel Mount |

Housing Features

|                    |                 |
|--------------------|-----------------|
| Housing Material   | Phenolic GF     |
| Centerline (Pitch) | 3.81 mm[.15 in] |

Dimensions

|                    |                    |
|--------------------|--------------------|
| Row-to-Row Spacing | 3.3 mm[.13 in]     |
| Connector Width    | 28.7 mm[1.13 in]   |
| Connector Height   | 71.88 mm[2.83 in]  |
| Wire Size          | 30 – 14 AWG        |
| Connector Length   | 57.35 mm[2.258 in] |

Usage Conditions

|                             |                            |
|-----------------------------|----------------------------|
| Operating Temperature Range | -55 – 150 °C[-67 – 302 °F] |
|-----------------------------|----------------------------|

Operation/Application

|                     |                |
|---------------------|----------------|
| Circuit Application | Power & Signal |
|---------------------|----------------|

Industry Standards

|                        |                               |
|------------------------|-------------------------------|
| Glow Wire Rating       | Standard Part - Not Glow Wire |
| UL Flammability Rating | UL 94V-0                      |

Packaging Features

|                    |        |
|--------------------|--------|
| Packaging Quantity | 1      |
| Packaging Method   | Carton |



Product Compliance

For compliance documentation, visit the product page on TE.com>

|   |   |
|---|---|
| EU RoHS Directive 2011/65/EU                  | Compliant   |
| EU ELV Directive 2000/53/EC                   | Compliant   |
| China RoHS 2 Directive MIIT Order No 32, 2016 | No Restricted Materials Above Threshold   |
| EU REACH Regulation (EC) No. 1907/2006        | Current ECHA Candidate List: JAN 2025 (247)<br>Candidate List Declared Against: JAN 2025 (247)<br>Does not contain REACH SVHC |
| Halogen Content                               | Low Halogen - Br, Cl, F, I < 900 ppm per homogenous material. Also BFR/CFR/PVC Free   |
| Solder Process Capability                     | Not applicable for solder process capability  |

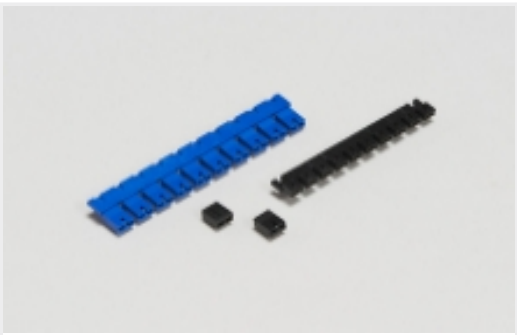
Product Compliance Disclaimer

This information is provided based on reasonable inquiry of our suppliers and represents our current actual knowledge based on the information they provided. This information is subject to change. The part numbers that TE has identified as EU RoHS compliant have a maximum concentration of 0.1% by weight in homogenous materials for lead, hexavalent chromium, mercury, PBB, PBDE, DBP, BBP, DEHP, DIBP, and 0.01% for cadmium, or qualify for an exemption to these limits as defined in the Annexes of Directive 2011/65/EU (RoHS2). Finished electrical and electronic equipment products will be CE marked as required by Directive 2011/65/EU. Components may not be CE marked. Additionally, the part numbers that TE has identified as EU ELV compliant have a maximum concentration of 0.1% by weight in homogenous materials for lead, hexavalent chromium, and mercury, and 0.01% for cadmium, or qualify for an exemption to these limits as defined in the Annexes of Directive 2000/53/EC (ELV). Regarding the REACH Regulation, the information TE provides on SVHC in articles for this part number is based on the latest European Chemicals Agency (ECHA) ‘Guidance on requirements for substances in articles’ posted at this URL: <https://echa.europa.eu/guidance-documents/guidance-on-reach>

Compatible Parts



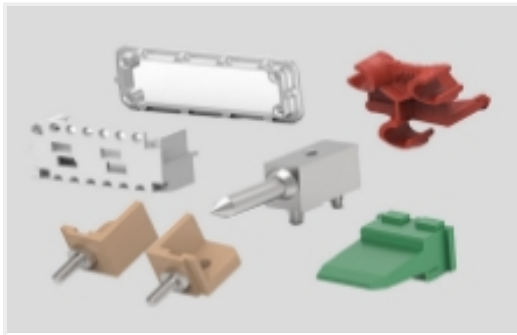
Also in the Series | AMP M Series



Board-to-Board Jumpers & Shunts(5)



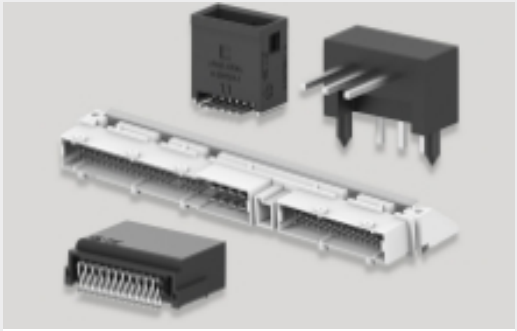
Connector Caps & Covers(14)



Connector Hardware(47)



Connector Strain Relief(13)



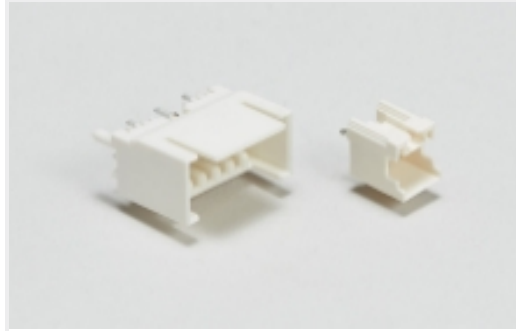
PCB Headers & Receptacles(9)



Rack & Panel Connectors(1)



Rectangular Power Connectors(82)



Wire-to-Board Headers & Receptacles  
(1)

Customers Also Bought



TE Part #201692-9  
CNTR FASTENER PLUG BLOCK,104P



TE Part #1-770903-0  
MINI UMNL PIN 22-18 AWG AU



TE Part #2176163-5  
UPF50 0.1% 5PPM 120R



TE Part #5-2176070-1  
3521 1K2 1% 2W



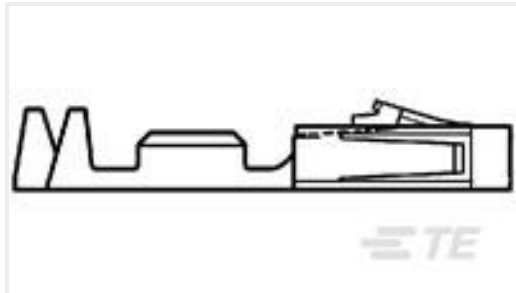
TE Part #794772-2  
02P MINI UMNL SEAL,DIE CUT



TE Part #2176163-9  
UPF50 0.1% 5PPM 20R



TE Part #3-2176177-6  
CRGH0603 1% 120K 0.2W



TE Part #104479-3  
SHORT POINT CONT 15 DPLX STMPD



TE Part #1622424-1  
LR1 1% 2R2



TE Part #2176163-4  
UPF50 0.1% 5PPM 10R

Documents



CAD Files

3D PDF

English

Customer View Model

ENG\_CVM\_201692-2\_AN.2d\_dxf.zip

English

Customer View Model

ENG\_CVM\_201692-2\_AN.3d\_igs.zip

English

Customer View Model

ENG\_CVM\_201692-2\_AN.3d\_stp.zip

English

Customer View Model

ENG\_CVM\_CVM\_201692-2\_AY.3d\_igs.zip

English

Customer View Model

ENG\_CVM\_CVM\_201692-2\_AY.3d\_stp.zip

English

Customer View Model

ENG\_CVM\_CVM\_201692-2\_AY.2d\_dxf.zip

English

3D PDF

3D

By downloading the CAD file I accept and agree to the [Terms and Conditions](#) of use.

Datasheets & Catalog Pages

M\_SERIES\_PIN\_AND\_SOCKET\_CONNECTORS

English

Instruction Sheets

Instruction Sheet (U.S.)

English

M Series 104-Position Plug & Receptacle Connectors w/Center Fasteners

English

Agency Approvals

Agency Approval Document

English