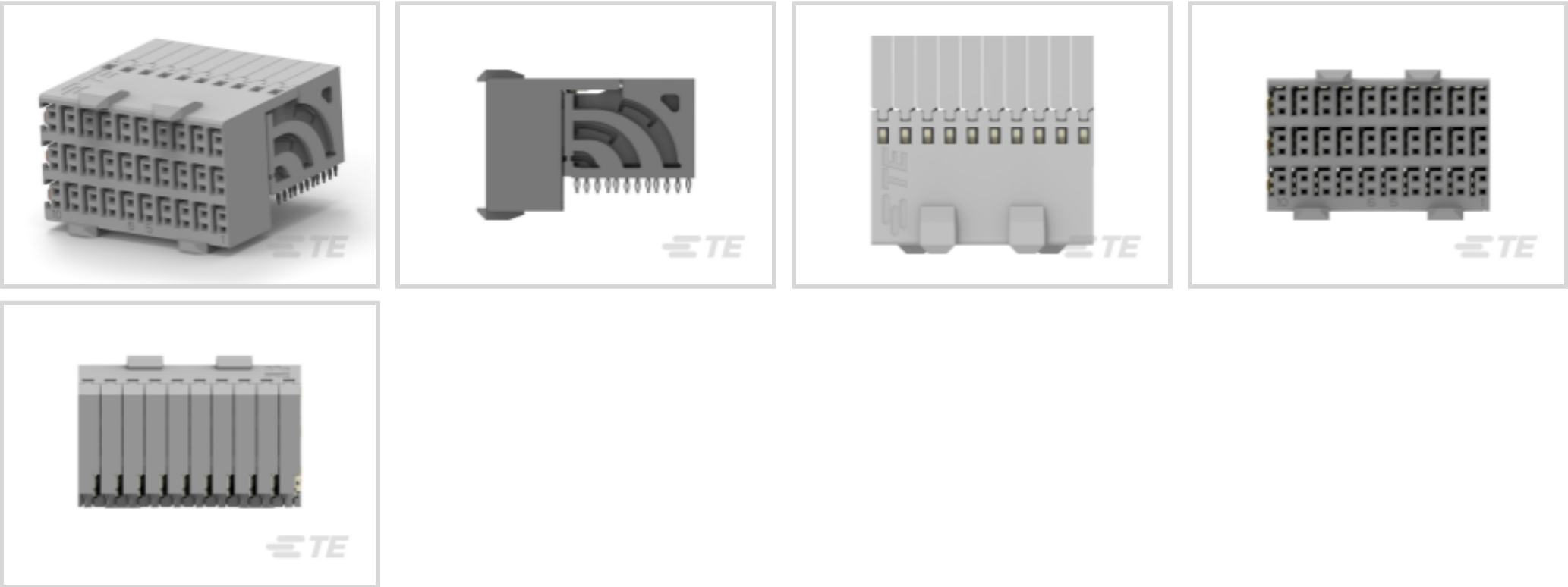




Connectors > PCB Connectors > Backplane Connectors > High Speed Backplane Connectors



Number of Positions: 60  
Row-to-Row Spacing: 1.5 mm [ .059 in ]  
Mating Alignment: With  
Mating Alignment Type: Polarization  
Number of Rows: 6

Features

Product Type Features

Connector & Contact Terminates To	Printed Circuit Board
Connector System	Board-to-Board
PCB Connector Type	PCB Mount Receptacle
Shroud Style	Fully Shrouded

Configuration Features

Number of Pairs	60
Number of Ground Positions	60
Number of Signal Positions	60
Pairs per Column	3
Card Slot Centerline	25.4 mm[1 in]
Number of Positions	60
Number of Rows	6
Number of Columns	10
PCB Mount Orientation	Right Angle



Guide Location	Unguided
Electrical Characteristics	
Operating Voltage	250 VAC
Signal Characteristics	
Data Rate	≤12 Gb/s
Body Features	
Shield Material	Phosphor Bronze
Primary Product Color	Gray
Contact Features	
Contact Mating Area Plating Material Thickness	.76 μm[30 μin]
Contact Layout	Matrix
Contact Mating Area Plating Material	Gold (Au)
Contact Base Material	Copper Nickel Silicon
Contact Type	Receptacle
Contact Current Rating (Max)	.6 A
Termination Features	
Termination Method to PCB	Through Hole - Press-Fit
Termination Post & Tail Length	1.7 mm[.066 in]
Mechanical Attachment	
Mating Alignment	With
Mating Alignment Type	Polarization
Connector Mounting Type	Board Mount
Housing Features	
Housing Material	Polyester GF
Centerline (Pitch)	2.5 mm[.098 in]
Dimensions	
Connector Width	23.4 mm[.921 in]
Connector Height	14.85 mm[.584 in]
Connector Length	24.9 mm[.98 in]
Row-to-Row Spacing	1.5 mm[.059 in]
Usage Conditions	



Operating Temperature Range	-65 – 105 °C[-85 – 221 °F]
-----------------------------	----------------------------

Operation/Application

Circuit Application	Signal
---------------------	--------

Industry Standards

UL Flammability Rating	UL 94V-0
------------------------	----------

Packaging Features

Packaging Method	Tube
------------------	------

Product Compliance

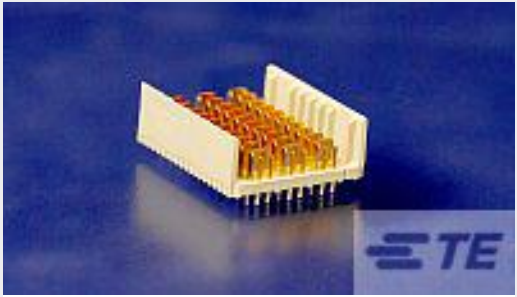
For compliance documentation, visit the product page on [TE.com](#)>

EU RoHS Directive 2011/65/EU	Compliant
EU ELV Directive 2000/53/EC	Compliant
China RoHS 2 Directive MIIT Order No 32, 2016	No Restricted Materials Above Threshold
EU REACH Regulation (EC) No. 1907/2006	Current ECHA Candidate List: JAN 2025 (247) Candidate List Declared Against: JAN 2025 (247) Does not contain REACH SVHC
Halogen Content	Low Halogen - Br, Cl, F, I < 900 ppm per homogenous material. Also BFR/CFR/PVC Free
Solder Process Capability	Not applicable for solder process capability

Product Compliance Disclaimer

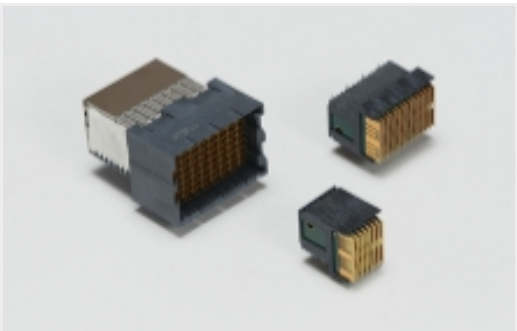
This information is provided based on reasonable inquiry of our suppliers and represents our current actual knowledge based on the information they provided. This information is subject to change. The part numbers that TE has identified as EU RoHS compliant have a maximum concentration of 0.1% by weight in homogenous materials for lead, hexavalent chromium, mercury, PBB, PBDE, DBP, BBP, DEHP, DIBP, and 0.01% for cadmium, or qualify for an exemption to these limits as defined in the Annexes of Directive 2011/65/EU (RoHS2). Finished electrical and electronic equipment products will be CE marked as required by Directive 2011/65/EU. Components may not be CE marked. Additionally, the part numbers that TE has identified as EU ELV compliant have a maximum concentration of 0.1% by weight in homogenous materials for lead, hexavalent chromium, and mercury, and 0.01% for cadmium, or qualify for an exemption to these limits as defined in the Annexes of Directive 2000/53/EC (ELV). Regarding the REACH Regulation, the information TE provides on SVHC in articles for this part number is based on the latest European Chemicals Agency (ECHA) ‘Guidance on requirements for substances in articles’ posted at this URL: <https://echa.europa.eu/guidance-documents/guidance-on-reach>

Compatible Parts



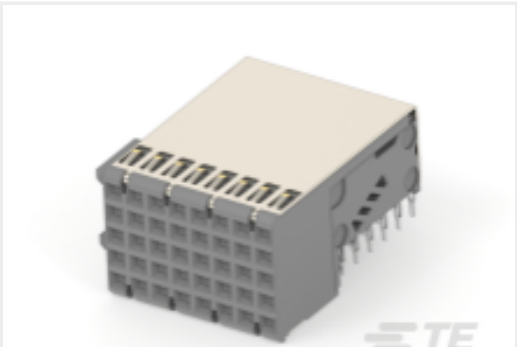
TE Part # 2170245-1  
HMZD+,3PAIRS,10COLS,VERTICAL, ASSEMBLY

Also in the Series | Z-PACK HM-Zd+

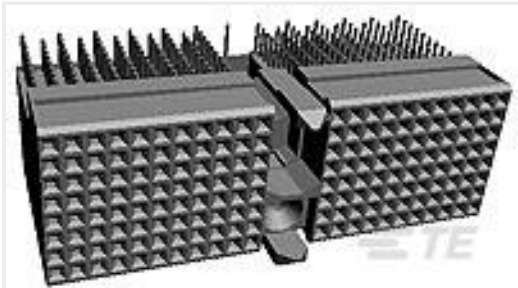


High Speed Backplane Connectors(5)

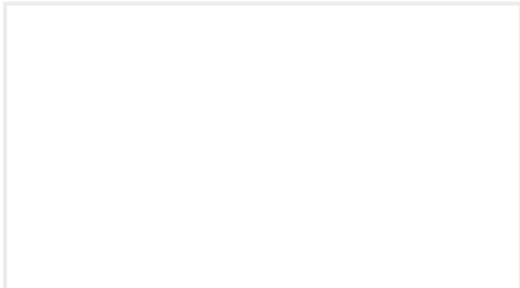
Customers Also Bought



TE Part #2367982-1  
2MM HM FEMALE ASSY, COL8



TE Part #5646486-1  
8-ROW,TWST,TUL TYPE/D W/SHEILD



TE Part #2450731-1  
CEM CA,PCIe X16 TO 2X MCIO X8 STR



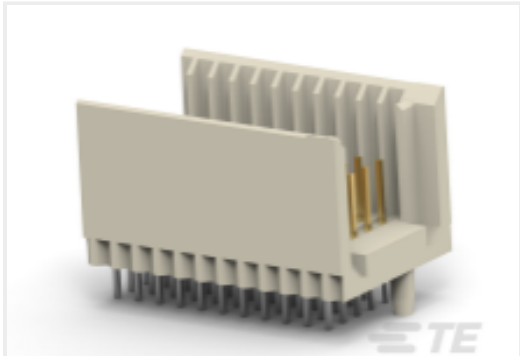
TE Part #5353831-8  
.6FHP07H,100,S,GIG,08/Sn,TR,NSYes



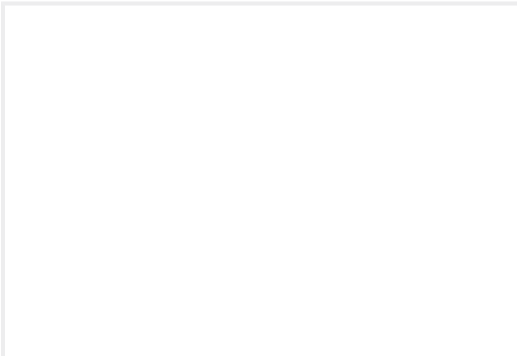
TE Part #1554953-1  
FBIS-II PLUG ASSY 4 POS V TYPE



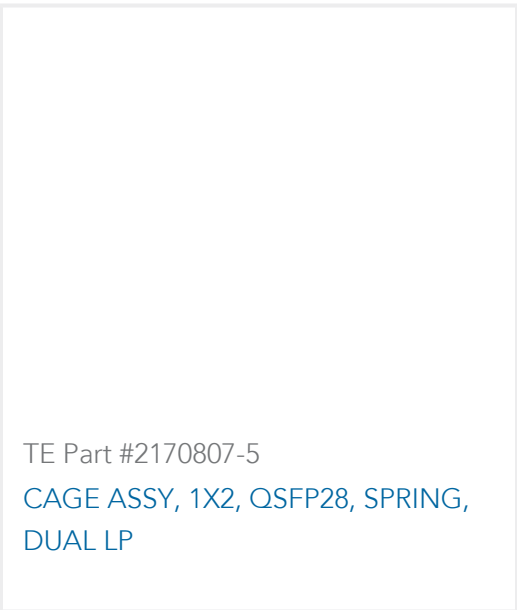
TE Part #2309413-4  
DDR4 SODIMM 260P 9.2H STD



TE Part #CAT-472-Z12  
Hard Metric Male Connector:  
Traditional Backplane, Mezzanine,  
2mm



TE Part #6364372-4  
Std USB Type A, R/A, T/H, Black



TE Part #2170807-5  
CAGE ASSY, 1X2, QSFP28, SPRING,  
DUAL LP



Documents

Product Drawings

Zd Plus, 3 pair receptacle ass

English

CAD Files

3D PDF

3D

Customer View Model

ENG\_CVM\_CVM\_2065883-1\_D.2d\_dxf.zip

English

Customer View Model

ENG\_CVM\_CVM\_2065883-1\_D.3d\_igs.zip

English

Customer View Model

ENG\_CVM\_CVM\_2065883-1\_D.3d\_stp.zip

English

By downloading the CAD file I accept and agree to the [Terms and Conditions](#) of use.

Datasheets & Catalog Pages

5-1773463-9\_Z-PACK\_HM-ZD\_PLUS\_CONNECTOR

English

Product Specifications

Application Specification

English