



Connectors > Power Connectors > Circular Power > Circular Power Connectors



Number of Positions: **16**

Connector Product Type: **Housing**

Operating Voltage: **600 VDC**

Connector System: **Wire-to-Wire**

Sealable: **No**

Features

Product Type Features

Connector Product Type	Housing
Connector System	Wire-to-Wire
Sealable	No
Connector & Contact Terminates To	Wire & Cable
Connector & Housing Type	Plug
Circular Connector Shell Type	All Plastic

Configuration Features

Reverse Numbering	Without
Number of Positions	16
Number of Power Positions	4
Number of Signal Positions	12

Electrical Characteristics

Operating Voltage	600 VAC
-------------------	---------

Contact Features



Reverse Gender	No
Contact Type	Socket
Contact Protection	With

Termination Features

Termination Method to Wire & Cable	Crimp
------------------------------------	-------

Mechanical Attachment

Mating Alignment Type	Keyed
Mating Retention Type	Threaded Coupling
Mating Alignment	With
Thread Size	1-3/8 - 18 UNEF-2A
Connector Mounting Type	Cable Mount (Free-Hanging)
Mating Retention	With
Panel Mount Feature	Without

Housing Features

Body Orientation	Straight
Housing Color	Black
Housing Material	PA 6.6 GF
Circular Connector Shell Size	23

Usage Conditions

Operating Temperature Range	-55 – 105 °C[-67 – 221 °F]
Fluid Resistance	None

Operation/Application

Circuit Application	Power & Signal
Shielded	No

Industry Standards

UL Flammability Rating	UL 94V-0
------------------------	----------

Packaging Features

Packaging Quantity	100
Packaging Method	Standard

Product Compliance

For compliance documentation, visit the product page on [TE.com](#)>



EU RoHS Directive 2011/65/EU	Compliant
EU ELV Directive 2000/53/EC	Compliant
China RoHS 2 Directive MIIT Order No 32, 2016	No Restricted Materials Above Threshold
EU REACH Regulation (EC) No. 1907/2006	Current ECHA Candidate List: JAN 2025 (247) Candidate List Declared Against: JAN 2025 (247) SVHC > Threshold: Triphenyl phosphate (TPP) (1% in 4995546) Article Safe Usage Statements: Wash thoroughly after handling. Do not handle until all safety precautions have been read and understood. Recycle if possible and dispose of the article by following all applicable governmental regulations relevant to your geographic location.
Halogen Content	BFR/CFR/PVC Free, but Br/Cl >900 ppm in other sources.
Solder Process Capability	Not applicable for solder process capability

Product Compliance Disclaimer

This information is provided based on reasonable inquiry of our suppliers and represents our current actual knowledge based on the information they provided. This information is subject to change. The part numbers that TE has identified as EU RoHS compliant have a maximum concentration of 0.1% by weight in homogenous materials for lead, hexavalent chromium, mercury, PBB, PBDE, DBP, BBP, DEHP, DIBP, and 0.01% for cadmium, or qualify for an exemption to these limits as defined in the Annexes of Directive 2011/65/EU (RoHS2). Finished electrical and electronic equipment products will be CE marked as required by Directive 2011/65/EU. Components may not be CE marked. Additionally, the part numbers that TE has identified as EU ELV compliant have a maximum concentration of 0.1% by weight in homogenous materials for lead, hexavalent chromium, and mercury, and 0.01% for cadmium, or qualify for an exemption to these limits as defined in the Annexes of Directive 2000/53/EC (ELV). Regarding the REACH Regulation, the information TE provides on SVHC in articles for this part number is based on the latest European Chemicals Agency (ECHA) 'Guidance on requirements for substances in articles' posted at this URL: <https://echa.europa.eu/guidance-documents/guidance-on-reach>

Compatible Parts



TE Part # 207486-1
SIZE 23-16 RECEPTACLE,CPC



TE Part # 207486-5
SIZE 23-16 RECEPT,CPC,W/SEAL



TE Part # 207486-2
RECEPT,SZ 23-16,CPC

Also in the Series | AMP Circular Plastic Connectors



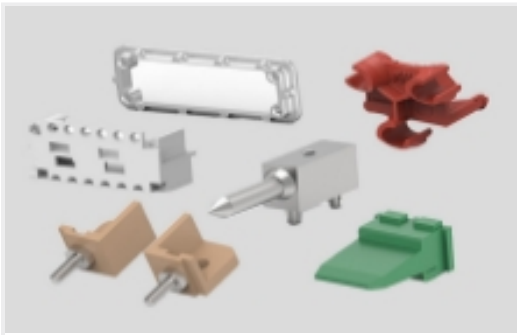
Circular Power Connectors(423)



Connector Backshells(1)



Connector Caps & Covers(16)



Connector Hardware(10)



Connector Seals & Cavity Plugs(35)



Connector Strain Relief(60)



Insertion & Extraction Tools(1)

Customers Also Bought



TE Part #2500034-3
SRC Female Conduit Cover



TE Part #206838-1
23-24 RECEPT



TE Part #2-66740-1
TYPE XII FEMALE CONT (LP)



TE Part #2500004-1
SRC Pwr 48+8ADG Female Recp Hsg Assy



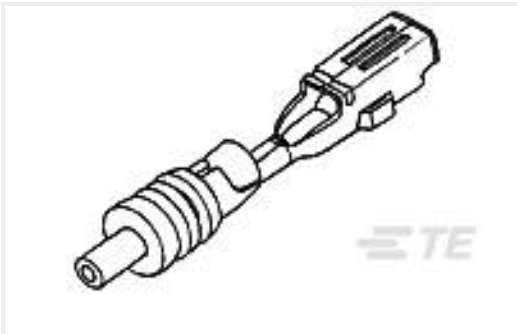
TE Part #207017-1
METRIMATE PLUG, 12 POS



TE Part #207486-2
RECEPT,SZ 23-16,CPC



TE Part #280755-2
FF 375 REC 6-10MM2 TPBR



TE Part #171662-1
E-J MK-2 070 REC CONT



TE Part #2500034-4
SRC Female Conduit Cover



TE Part #281856-2
POSITIVE LOCK HOUSING

Documents



Product Drawings

CPC PLUG ASSEMBLY SIZE 23-16

English

CAD Files

3D PDF

3D

Customer View Model

ENG_CVM_CVM_207485-2_K.2d_dxf.zip

English

Customer View Model

ENG_CVM_CVM_207485-2_K.3d_igs.zip

English

Customer View Model

ENG_CVM_CVM_207485-2_K.3d_stp.zip

English

Customer View Model

ENG_CVM_207485-2_G1.3d_igs.zip

English

Customer View Model

ENG_CVM_207485-2_G1.3d_stp.zip

English

Customer View Model

ENG_CVM_207485-2_G1.2d_dxf.zip

English

3D PDF

3D

By downloading the CAD file I accept and agree to the [Terms and Conditions](#) of use.

Product Specifications

Connector, Circular Plastic

English

Product Specification

English

Agency Approvals

CSA Certificate

English

CSA Certificate

English