



Connectors > Automotive Connectors > Automotive Housings



Number of Positions: 30

Connector & Housing Type: Housing for Female Terminals

Mating Tab Width: .64 mm, 2.8 mm [ .025 in, .11 in ]

Connector System: Wire-to-Board, Wire-to-Device

Centerline (Pitch): 2.54 mm, 4.6 mm [ .1 in, .18 in ]

Features

Product Type Features

Mixed & Hybrid Connector	Yes
Connector Shape	Rectangular
Connector & Housing Type	Housing for Female Terminals
Connector System	Wire-to-Board, Wire-to-Device
Sealable	No
Primary Locking Feature	Integrated in Housing
Connector & Contact Terminates To	Wire & Cable

Configuration Features

Blank Cavity Position	11, 4
Number of Positions	30
Number of Rows	5

Body Features

Cable Exit Angle	180°
Primary Product Color	Gray



Connector & Keying Code	B2
-------------------------	----

Contact Features

Contact Size	.64mm, 2.8mm
Contact Type	Receptacle
Mating Tab Width	.64 mm, 2.8 mm[.025 in][.11 in]

Mechanical Attachment

Strain Relief	Without
Terminal Position Assurance	No
Mating Alignment Type	Keyed
Mating Alignment	With
Connector Mounting Type	Cable Mount (Free-Hanging)

Housing Features

Housing Material	PBT GF
Centerline (Pitch)	2.54 mm, 4.6 mm[.1 in][.18 in]

Dimensions

Row-to-Row Spacing	3.8 mm[.15 in]
Product Width	25.2 mm[.99 in]
Product Length	20.3 mm[.8 in]
Connector Height	31.3 mm[1.23 in]

Usage Conditions

Operating Temperature (Max)	85 °C[185 °F]
Operating Temperature Range	-40 – 85 °C[-40 – 185 °F]

Operation/Application

Circuit Application	Power & Signal
---------------------	----------------

Industry Standards

Compatible With Agency/Standards Products	GMW191
---	--------

Packaging Features

Packaging Quantity	1
Packaging Method	Package

Other

Serviceable	Yes
-------------	-----



Connector Position Assurance Capable

No

Product Compliance


For compliance documentation, visit the product page on TE.com>

EU RoHS Directive 2011/65/EU	Compliant
EU ELV Directive 2000/53/EC	Compliant
China RoHS 2 Directive MIIT Order No 32, 2016	No Restricted Materials Above Threshold
EU REACH Regulation (EC) No. 1907/2006	Current ECHA Candidate List: JAN 2025 (247) Candidate List Declared Against: JUL 2021 (219) Does not contain REACH SVHC
Halogen Content	Not Yet Reviewed for halogen content
Solder Process Capability	Not applicable for solder process capability


Product Compliance Disclaimer

This information is provided based on reasonable inquiry of our suppliers and represents our current actual knowledge based on the information they provided. This information is subject to change. The part numbers that TE has identified as EU RoHS compliant have a maximum concentration of 0.1% by weight in homogenous materials for lead, hexavalent chromium, mercury, PBB, PBDE, DBP, BBP, DEHP, DIBP, and 0.01% for cadmium, or qualify for an exemption to these limits as defined in the Annexes of Directive 2011/65/EU (RoHS2). Finished electrical and electronic equipment products will be CE marked as required by Directive 2011/65/EU. Components may not be CE marked. Additionally, the part numbers that TE has identified as EU ELV compliant have a maximum concentration of 0.1% by weight in homogenous materials for lead, hexavalent chromium, and mercury, and 0.01% for cadmium, or qualify for an exemption to these limits as defined in the Annexes of Directive 2000/53/EC (ELV). Regarding the REACH Regulation, the information TE provides on SVHC in articles for this part number is based on the latest European Chemicals Agency (ECHA) 'Guidance on requirements for substances in articles' posted at this URL: <https://echa.europa.eu/guidance-documents/guidance-on-reach>

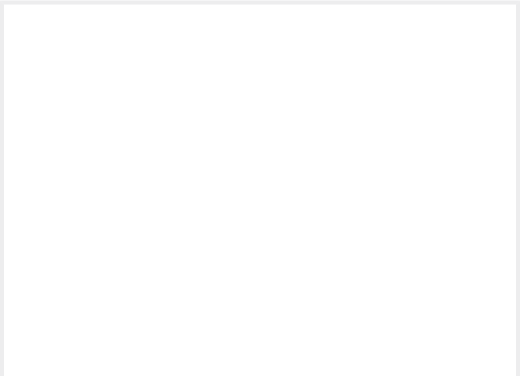
Compatible Parts




TE Part # 2098065-6  
Plug, Unsealed, Hybrid, BCM, B2, F Key



TE Part # 2098762-3  
Contact,female 0.64, 26 AWG, CuNiSi, Sn



TE Part # 2098066-6  
Secondary Lock Plate, BCM, B2, F Key



TE Part # CAT-N57-GYTH68  
Generation Y Terminals, 68POS Hybrid

Also in the Series | Generation Y Connector System



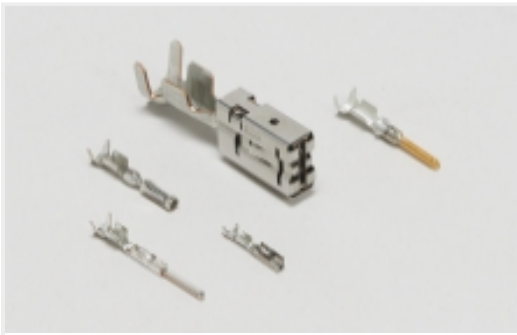
Automotive Connector Caps & Covers  
(19)



Automotive Headers(13)



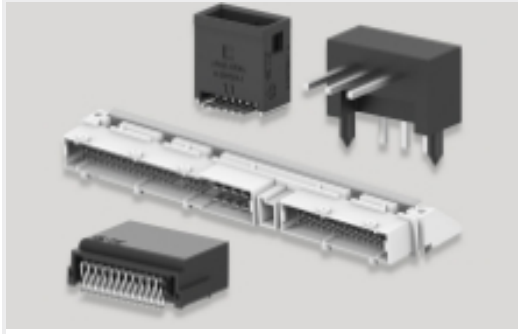
Automotive Housings(138)



Automotive Terminals(43)



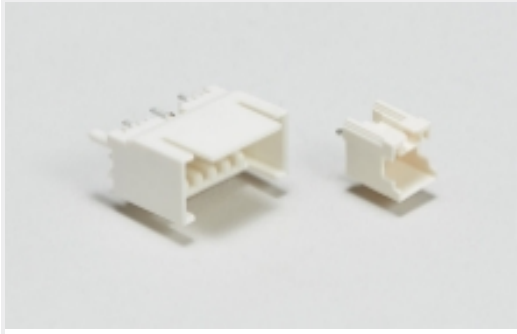
Connector Seals & Cavity Plugs(6)



PCB Headers & Receptacles(13)



Rectangular Power Connectors(2)



Wire-to-Board Headers & Receptacles  
(12)

Customers Also Bought



TE Part #2098067-3  
Plug Assembly, Hybrid, BCM, U1, C Key



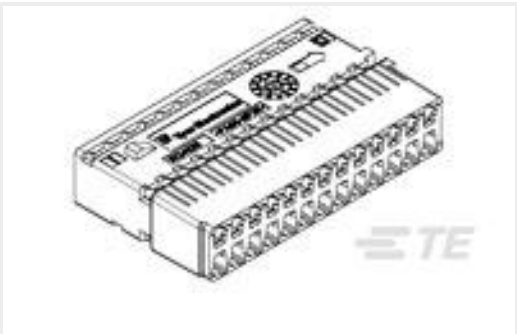
TE Part #1564982-1  
AMP MCP 2.8K, CONTACT



TE Part #2098067-5  
Plug Assembly, Hybrid, BCM, B1, E Key



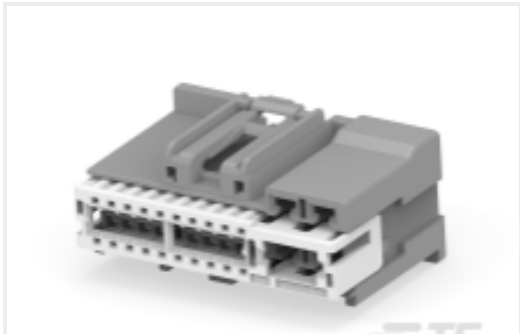
TE Part #2098067-2  
Plug Assembly, Hybrid, BCM, IP2, B Key



TE Part #1924136-2  
Carrier, 26P Generation Y, 52P Conn



TE Part #1418844-1  
MCON 1.2 CB REC SWS SN



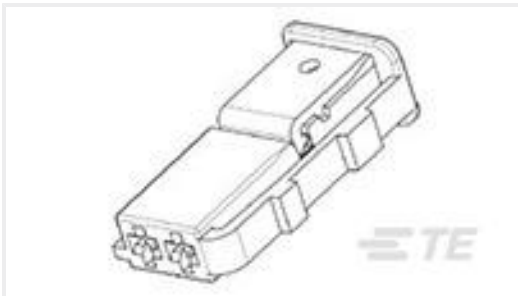
TE Part #2288274-2  
24P HYBRID 0.64/2.8 PLUG ASSY, B KEY



TE Part #2315977-2  
HYB 69P PLUG ASSY CODE1 KEY



TE Part #926845P006  
FL2500-NO.3-J1-0-27MM



TE Part #1563189-1  
2POS,MT 2,REC HSG,CODA

Documents



Product Drawings

Plug Assembly, Hybrid, BCM, B2, F Key

English

Plug Assembly, Hybrid, BCM, B2, F Key

English

CAD Files

3D PDF

3D

Customer View Model

ENG\_CVM\_CVM\_2098067-6\_D\_c-2098067-6-d.2d\_dxf.zip

English

Customer View Model

ENG\_CVM\_CVM\_2098067-6\_D\_c-2098067-6-d.3d\_igs.zip

English

Customer View Model

ENG\_CVM\_CVM\_2098067-6\_D\_c-2098067-6-d.3d\_stp.zip

English

By downloading the CAD file I accept and agree to the [Terms and Conditions](#) of use.

Instruction Sheets

Instruction Sheet (U.S.)

English