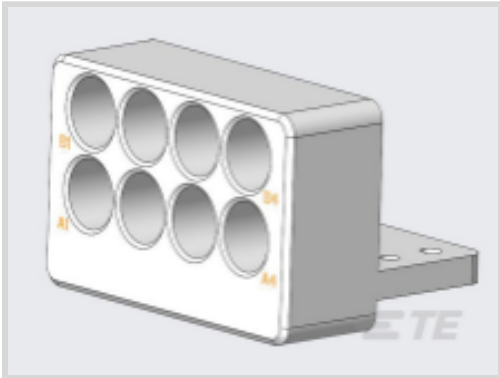




Connectors > RF Connectors > RF Modules > PCB RF Modules



Number of Coaxial Contacts: 8
PCB Mount Orientation: Right Angle
Body Material: Stainless Steel
Connector System: Cable-to-Cable
Number of Positions: 8

Features

Product Type Features

Connector System	Cable-to-Cable
Connector & Contact Terminates To	Wire & Cable

Configuration Features

Number of Coaxial Contacts	8
PCB Mount Orientation	Right Angle
Number of Positions	8

Body Features

Body Plating Material	Passivated
Body Material	Stainless Steel

Mechanical Attachment

Connector Mounting Type	Board Mount
-------------------------	-------------

Housing Features

Centerline (Pitch)	6.1 mm[.24 in]
--------------------	----------------

Dimensions

RF Contact Spacing	6.1 mm[.24 in]
--------------------	----------------

Usage Conditions

Operating Temperature Range	-55 – 105 °C[-67 – 221 °F]
-----------------------------	----------------------------



Operation/Application

Circuit Application	Signal
---------------------	--------

Product Compliance


For compliance documentation, visit the product page on TE.com>

EU RoHS Directive 2011/65/EU	Compliant
EU ELV Directive 2000/53/EC	Compliant
China RoHS 2 Directive MIIT Order No 32, 2016	No Restricted Materials Above Threshold
EU REACH Regulation (EC) No. 1907/2006	Current ECHA Candidate List: JAN 2025 (247) Candidate List Declared Against: JAN 2025 (247) Does not contain REACH SVHC
Halogen Content	Low Halogen - Br, Cl, F, I < 900 ppm per homogenous material. Also BFR/CFR/PVC Free
Solder Process Capability	Not applicable for solder process capability


Product Compliance Disclaimer

This information is provided based on reasonable inquiry of our suppliers and represents our current actual knowledge based on the information they provided. This information is subject to change. The part numbers that TE has identified as EU RoHS compliant have a maximum concentration of 0.1% by weight in homogenous materials for lead, hexavalent chromium, mercury, PBB, PBDE, DBP, BBP, DEHP, DIBP, and 0.01% for cadmium, or qualify for an exemption to these limits as defined in the Annexes of Directive 2011/65/EU (RoHS2). Finished electrical and electronic equipment products will be CE marked as required by Directive 2011/65/EU. Components may not be CE marked. Additionally, the part numbers that TE has identified as EU ELV compliant have a maximum concentration of 0.1% by weight in homogenous materials for lead, hexavalent chromium, and mercury, and 0.01% for cadmium, or qualify for an exemption to these limits as defined in the Annexes of Directive 2000/53/EC (ELV). Regarding the REACH Regulation, the information TE provides on SVHC in articles for this part number is based on the latest European Chemicals Agency (ECHA) 'Guidance on requirements for substances in articles' posted at this URL: <https://echa.europa.eu/guidance-documents/guidance-on-reach>


Customers Also Bought




TE Part #1-179472-6
CT DBL ROW HOLDER,CRIMP,16P,NA



TE Part #1410946-2
MULTI-GIG SOC. CAP SCREW, CUSTOMIZED HDW



TE Part #1551573-5
Shield Finger, Loose Piece



TE Part #1-1469492-2
MULTIGIG RT 9MM GUIDE/ESD 45 DEG



TE Part #179228-8
CT CRIMP TYPE REC HSG

TE Part #1-641737-1
04P CMNL HDR ASSY R/A V0

TE Part #104130-2
014 LOPRO HDR RA 30DP LATCH

TE Part #2321032-1
TERMINATOR, SMPM JACK, 50 OHM VITA 67

TE Part #1554901-1
SHIELD FINGER 2011 EMBOSS
PACKING

TE Part #5111448-1
010 UNIV I/O 30DP SLOT

Documents

Product Drawings

8 POS PCB MNT RF MODULE W/ PINS & MARK

English

CAD Files

3D PDF

3D

Customer View Model

ENG_CVM_CVM_2101924-4_F.2d_dxf.zip

English

Customer View Model

ENG_CVM_CVM_2101924-4_F.3d_igs.zip

English

Customer View Model

ENG_CVM_CVM_2101924-4_F.3d_stp.zip

English

By downloading the CAD file I accept and agree to the [Terms and Conditions](#) of use.

Instruction Sheets

Instruction Sheet (U.S.)

English