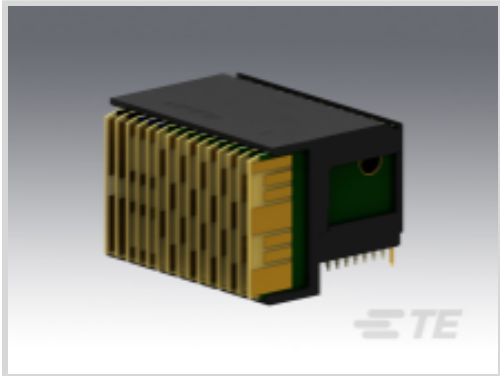




Connectors > PCB Connectors > Backplane Connectors > High Speed Backplane Connectors



Number of Positions: 112  
Row-to-Row Spacing: 1.35 mm [ .053 in ]  
Mating Alignment: With  
Number of Rows: 7  
Number of Columns: 16

Features

Product Type Features

Connector & Contact Terminates To	Printed Circuit Board
Compatible with PCB Type	Daughtercard
Connector System	Board-to-Board
PCB Connector Type	PCB Mount Header
Shroud Style	Fully Shrouded

Configuration Features

Backplane Architecture	Traditional Backplane
Number of Positions	112
Number of Rows	7
Number of Columns	16
PCB Mount Orientation	Right Angle
Guide Location	Center

Contact Features

Contact Current Rating (Max)	1.5 A
------------------------------	-------

Mechanical Attachment

Mating Alignment	With
Connector Mounting Type	Board Mount

Housing Features



Number of Shrouded Sides	2
Centerline (Pitch)	1.9 mm[.075 in]

Dimensions

Row-to-Row Spacing	1.35 mm[.053 in]
--------------------	------------------

Usage Conditions

Operating Temperature Range	-55 – 125 °C[-67 – 257 °F]
-----------------------------	----------------------------

Operation/Application

Circuit Application	Power & Signal
---------------------	----------------

Product Compliance

For compliance documentation, visit the product page on TE.com>

EU RoHS Directive 2011/65/EU	Not Compliant
EU ELV Directive 2000/53/EC	Compliant with Exemptions
China RoHS 2 Directive MIIT Order No 32, 2016	Restricted Materials Above Threshold
EU REACH Regulation (EC) No. 1907/2006	Current ECHA Candidate List: JAN 2025 (247) Candidate List Declared Against: JUNE 2024 (241) SVHC > Threshold: Pb (13% in Component Part) <b>Article Safe Usage Statements:</b> Do not eat, drink or smoke when using this product. Wash thoroughly after handling. Recycle if possible and dispose of the article by following all applicable governmental regulations relevant to your geographic location.
Halogen Content	Not Low Halogen - contains Br or Cl > 900 ppm.
Solder Process Capability	Not applicable for solder process capability

Product Compliance Disclaimer

This information is provided based on reasonable inquiry of our suppliers and represents our current actual knowledge based on the information they provided. This information is subject to change. The part numbers that TE has identified as EU RoHS compliant have a maximum concentration of 0.1% by weight in homogenous materials for lead, hexavalent chromium, mercury, PBB, PBDE, DBP, BBP, DEHP, DIBP, and 0.01% for cadmium, or qualify for an exemption to these limits as defined in the Annexes of Directive 2011/65/EU (RoHS2). Finished electrical and electronic equipment products will be CE marked as required by Directive 2011/65/EU. Components may not be CE marked. Additionally, the part numbers that TE has identified as EU ELV compliant have a maximum concentration of 0.1% by weight in homogenous materials for lead, hexavalent chromium, and mercury, and 0.01% for cadmium, or qualify for an exemption to these limits as defined in the Annexes of Directive 2000/53/EC (ELV). Regarding the REACH Regulation, the information TE provides on SVHC in articles for this part number is based on the latest European Chemicals Agency (ECHA) ‘Guidance on requirements for substances in articles’ posted at this URL: <https://echa.europa.eu/guidance-documents/guidance-on-reach>

Compatible Parts





TE Part # 2000713-1  
RA Keyed Guide Mod, Vita 46, Machined

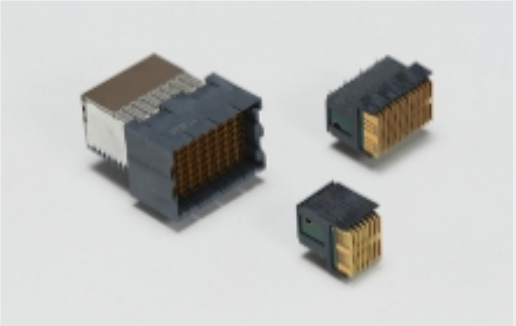


TE Part # 2000676-1  
Keyed Guide Pin, Machined, Vita 46

Also in the Series | MULTIGIG RT 2-R




Connector Hardware(18)



High Speed Backplane Connectors(27)

Customers Also Bought



TE Part #CAT-AS22759-32  
SAE AS22759: 32/33/44/45/46 - Single-Wall, Lightweight Wire



TE Part #2102735-1  
BP, Half Left End, MULTIGIG RT 2R



TE Part #2000713-6  
RA Keyed Guide Mod, Vita 46, Machined



TE Part #2102736-1  
BP, Center, MULTIGIG RT 2R



TE Part #2176371-8  
RQ 0603 5K49 0.1% 10PPM 5K RL



TE Part #4-2176369-7  
RQ 0603 121R 0.1% 10PPM 5K RL



TE Part #6-2176370-6  
RQ 0603 2K05 0.1% 10PPM 5K RL



TE Part #2102772-1  
DC, 7Row, Half Left End, MULTIGIG RT 2R



TE Part #4-2176369-0  
RQ 0603 102R 0.1% 10PPM 5K RL



Documents

Product Drawings

DC, 7Row, Center, RTM, MULTIGIG RT 2R

English

CAD Files

3D PDF

3D

Customer View Model

ENG\_CVM\_CVM\_2102773-1\_C\_c-2102773-1-c.2d\_dxf.zip

English

Customer View Model

ENG\_CVM\_CVM\_2102773-1\_C\_c-2102773-1-c.3d\_igs.zip

English

Customer View Model

ENG\_CVM\_CVM\_2102773-1\_C\_c-2102773-1-c.3d\_stp.zip

English

By downloading the CAD file I accept and agree to the [Terms and Conditions](#) of use.

Datasheets & Catalog Pages

MULTIGIG RT 2-R Ruggedized Connectors

English

Product Specifications

Application Specification

English

Instruction Sheets

Instruction Sheet (U.S.)

English