



Connectors > Lighting Connectors > Plug & Socket Lighting Connectors



Connector System: **Wire-to-Wire**
Number of Positions: **2**
Centerline (Pitch): **.14 mm [3.5 in]**
Sealable: **Yes**
Connector & Contact Terminates To: **Printed Circuit Board**

Features

Product Type Features

Connector System	Wire-to-Wire
Sealable	Yes
Connector & Contact Terminates To	Printed Circuit Board
Lighting Connector Style	Receptacle

Configuration Features

Number of Positions	2
---------------------	---

Electrical Characteristics

Operating Voltage	400 VDC
-------------------	---------

Body Features

Primary Product Color	Black
-----------------------	-------

Contact Features

Contact Current Rating (Max)	5 A
------------------------------	-----

Housing Features

--	--



Centerline (Pitch)	.14 mm[3.5 in]
--------------------	----------------

Usage Conditions

Operating Temperature Range	-40 – 105 °C[-40 – 221 °F]
-----------------------------	----------------------------

Product Compliance

For compliance documentation, visit the product page on TE.com>

EU RoHS Directive 2011/65/EU	Compliant
EU ELV Directive 2000/53/EC	Compliant
China RoHS 2 Directive MIIT Order No 32, 2016	No Restricted Materials Above Threshold
EU REACH Regulation (EC) No. 1907/2006	Current ECHA Candidate List: JAN 2025 (247) Candidate List Declared Against: JAN 2025 (247) Does not contain REACH SVHC
Halogen Content	Low Halogen - Br, Cl, F, I < 900 ppm per homogenous material. Also BFR/CFR/PVC Free
Solder Process Capability	Reflow solder capable to 260°C

Product Compliance Disclaimer

This information is provided based on reasonable inquiry of our suppliers and represents our current actual knowledge based on the information they provided. This information is subject to change. The part numbers that TE has identified as EU RoHS compliant have a maximum concentration of 0.1% by weight in homogenous materials for lead, hexavalent chromium, mercury, PBB, PBDE, DBP, BBP, DEHP, DIBP, and 0.01% for cadmium, or qualify for an exemption to these limits as defined in the Annexes of Directive 2011/65/EU (RoHS2). Finished electrical and electronic equipment products will be CE marked as required by Directive 2011/65/EU. Components may not be CE marked. Additionally, the part numbers that TE has identified as EU ELV compliant have a maximum concentration of 0.1% by weight in homogenous materials for lead, hexavalent chromium, and mercury, and 0.01% for cadmium, or qualify for an exemption to these limits as defined in the Annexes of Directive 2000/53/EC (ELV). Regarding the REACH Regulation, the information TE provides on SVHC in articles for this part number is based on the latest European Chemicals Agency (ECHA) 'Guidance on requirements for substances in articles' posted at this URL: <https://echa.europa.eu/guidance-documents/guidance-on-reach>

Compatible Parts



Also in the Series | SlimSeal Connectors Headers



Plug & Socket Lighting Connectors(19)

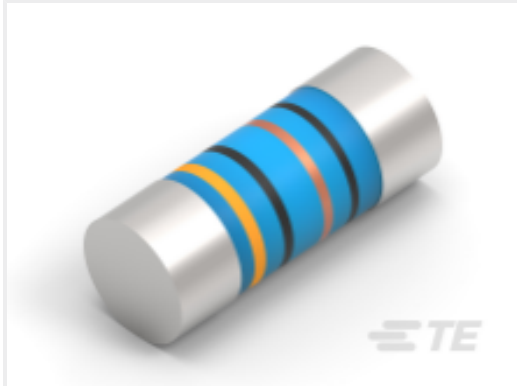
Customers Also Bought



TE Part #2057411-1
IMP100S,R,RA2P16C,UG,39



TE Part #2102773-1
DC, 7Row, Center, RTM, MULTIGIG RT 2R



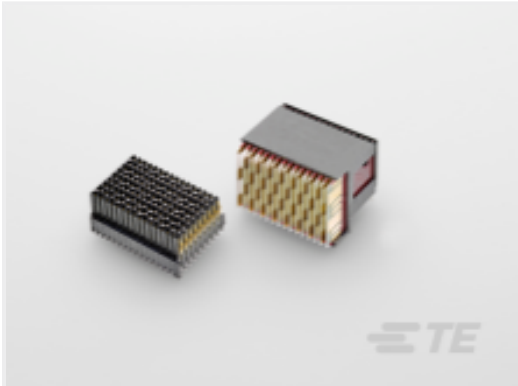
TE Part #2176315-2
MELF SMA_A 120R 0.1% 15PPM 0204 0.4W



TE Part #1624044-2
SC30-10-2501-10 0.1UH AMMO 1000



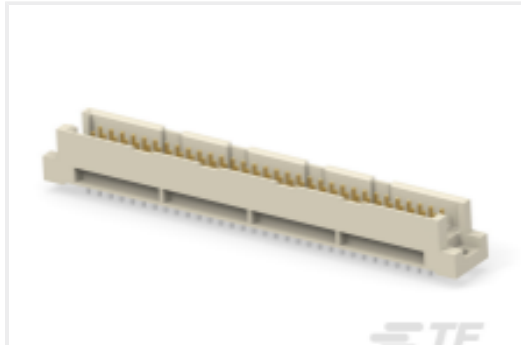
TE Part #5787082-3
28 50SR R/A RCPT ASSY,RDSN L/F



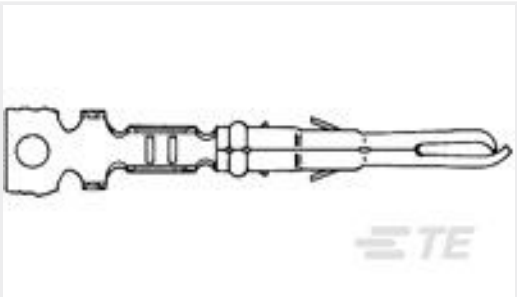
TE Part #2313237-2
RAPLUGASSY,MGRT3,POWER,DP,SE, CENTER



TE Part #2-2400680-2
2P CAP TPA, UMNL



TE Part #374604-E
STVR 96 MI ABC VVV 4-00 GA06 2,5 * 247 E



TE Part #640580-2
MR SPLIT PIN AUPHBRZ LP 26-18



TE Part #4515DO-DS3BK004DP
4IN PCB MOUNT I2C DIFF PRESSURE SENSOR

Documents

Product Drawings

Assembly, Vertical SMT Header, 2-Positio

English

CAD Files

3D PDF

3D

Customer View Model

ENG_CVM_CVM_2106053-2_B_c-2106053-2-b.2d_dxf.zip



English

Customer View Model

[ENG_CVM_CVM_2106053-2_B_c-2106053-2-b.3d_igs.zip](#)

English

Customer View Model

[ENG_CVM_CVM_2106053-2_B_c-2106053-2-b.3d_stp.zip](#)

English

By downloading the CAD file I accept and agree to the [Terms and Conditions](#) of use.

Datasheets & Catalog Pages

[SLIMSEAL_SSL_CONNECOTS](#)

English

Product Specifications

[Application Specification](#)

English

Agency Approvals

[UL Report](#)

English