



AMP | Circular Plastic Connectors Series 1, AMP Circular Plastic Connectors

TE Internal #: 211769-5

9 Position Circular Power Connector, Housing, 600 VDC, Wire-to-Wire, Wire & Cable, Receptacle, Reverse Gender, Socket, AMP Circular Plastic Connectors

[View on TE.com >](#)

Connectors > Power Connectors > Circular Power > Circular Power Connectors



Number of Positions: 9

Connector Product Type: **Housing**

Operating Voltage: **600 VDC**

Connector System: **Wire-to-Wire**

Sealable: **No**

Features

Product Type Features

Connector Product Type	Housing
Connector System	Wire-to-Wire
Sealable	No
Connector & Contact Terminates To	Wire & Cable
Connector & Housing Type	Receptacle
Circular Connector Shell Type	All Plastic

Configuration Features

Reverse Numbering	Without
Number of Positions	9
Number of Power Positions	0
Number of Signal Positions	9

Electrical Characteristics

Operating Voltage	600 VAC
-------------------	---------

Contact Features



Reverse Gender	Yes
Contact Type	Socket
Contact Protection	With

Mechanical Attachment

Mating Retention Type	Threaded Coupling
Thread Size	15/16-20 UNEF – 2A
Polarization Code	A
Panel Mount Feature Type	Flange with Threaded Inserts
Mating Alignment Type	Keyed
Mating Alignment	With
Connector Mounting Type	Panel Mount
Mating Retention	With
Panel Mount Feature	With

Housing Features

Body Orientation	Straight
Housing Color	Black
Housing Material	Nylon, Thermoplastic
Circular Connector Shell Size	17

Usage Conditions

Operating Temperature Range	-55 – 105 °C[-67 – 221 °F]
Fluid Resistance	None

Operation/Application

Circuit Application	Power & Signal
Shielded	No

Industry Standards

Compatible With Agency/Standards Products	VDE
UL Flammability Rating	UL 94V-0

Packaging Features

Packaging Quantity	1
Packaging Method	Package

Product Compliance



For compliance documentation, visit the product page on TE.com>

EU RoHS Directive 2011/65/EU	Compliant with Exemptions
EU ELV Directive 2000/53/EC	Compliant with Exemptions
China RoHS 2 Directive MIIT Order No 32, 2016	Restricted Materials Above Threshold
EU REACH Regulation (EC) No. 1907/2006	Current ECHA Candidate List: JAN 2025 (247) Candidate List Declared Against: JAN 2025 (247) SVHC > Threshold: Pb (3.7% in 74019106) Article Safe Usage Statements: Do not eat, drink or smoke when using this product. Wash thoroughly after handling. Recycle if possible and dispose of the article by following all applicable governmental regulations relevant to your geographic location.
Halogen Content	BFR/CFR/PVC Free, but Br/Cl >900 ppm in other sources.
Solder Process Capability	Not applicable for solder process capability

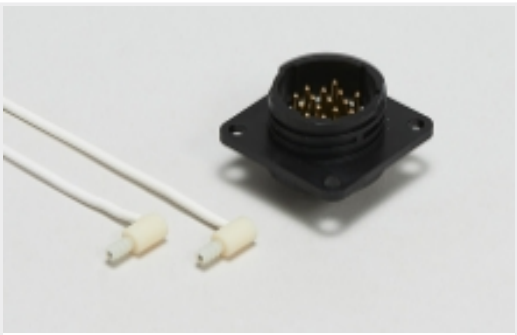
Product Compliance Disclaimer

This information is provided based on reasonable inquiry of our suppliers and represents our current actual knowledge based on the information they provided. This information is subject to change. The part numbers that TE has identified as EU RoHS compliant have a maximum concentration of 0.1% by weight in homogenous materials for lead, hexavalent chromium, mercury, PBB, PBDE, DBP, BBP, DEHP, DIBP, and 0.01% for cadmium, or qualify for an exemption to these limits as defined in the Annexes of Directive 2011/65/EU (RoHS2). Finished electrical and electronic equipment products will be CE marked as required by Directive 2011/65/EU. Components may not be CE marked. Additionally, the part numbers that TE has identified as EU ELV compliant have a maximum concentration of 0.1% by weight in homogenous materials for lead, hexavalent chromium, and mercury, and 0.01% for cadmium, or qualify for an exemption to these limits as defined in the Annexes of Directive 2000/53/EC (ELV). Regarding the REACH Regulation, the information TE provides on SVHC in articles for this part number is based on the latest European Chemicals Agency (ECHA) 'Guidance on requirements for substances in articles' posted at this URL: <https://echa.europa.eu/guidance-documents/guidance-on-reach>

Compatible Parts



Also in the Series | AMP Circular Plastic Connectors



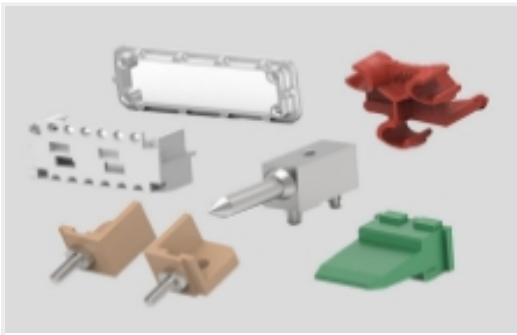
Circular Power Connectors(211)



Connector Backshells(1)



Connector Caps & Covers(16)



Connector Hardware(10)



Connector Seals & Cavity Plugs(35)

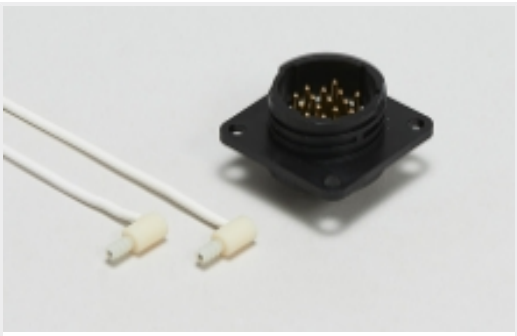


Connector Strain Relief(60)



Insertion & Extraction Tools(1)

Also in the Series | Circular Plastic Connectors Series 1



Circular Power Connectors(211)



Connector Contacts(260)



Power Contacts(260)

Customers Also Bought



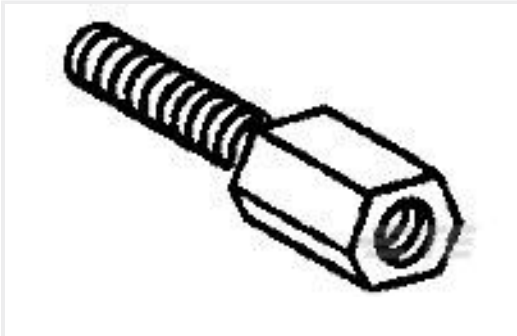
TE Part #206433-3
CPC RECPT ASSEMBLY SIZE 11-8



TE Part #5745968-4
25 PLUG SP/FMS STD



TE Part #5747299-4
15 RCPT SP/FMS STD



TE Part #5748270-2
FEMALE SCREWLOCK,ZN PLTD



TE Part #5747238-6
25 MSFL PLUG RA 318 (SL,FM)



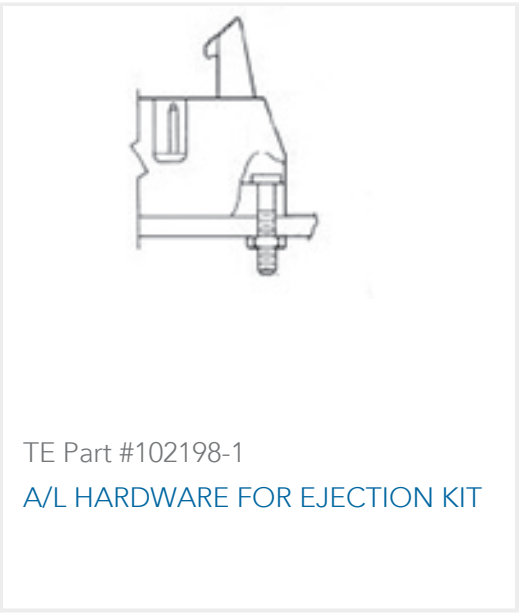
TE Part #5747150-4
09 RCPT SP/FMS STD



TE Part #1825006-5
GDS0404=DIP SW,SLIDE,THRU/HL



TE Part #5745967-4
25 RCPT SP/FMS STD



Documents

Product Drawings

17-9 CPC RECEPT REV SEX

English

CAD Files

3D PDF

3D

Customer View Model

ENG_CVM_CVM_211769-5_AF.2d_dxf.zip

English

Customer View Model

ENG_CVM_CVM_211769-5_AF.3d_igs.zip

English

Customer View Model

ENG_CVM_CVM_211769-5_AF.3d_stp.zip

English

By downloading the CAD file I accept and agree to the [Terms and Conditions](#) of use.

Agency Approvals

UL Report

English