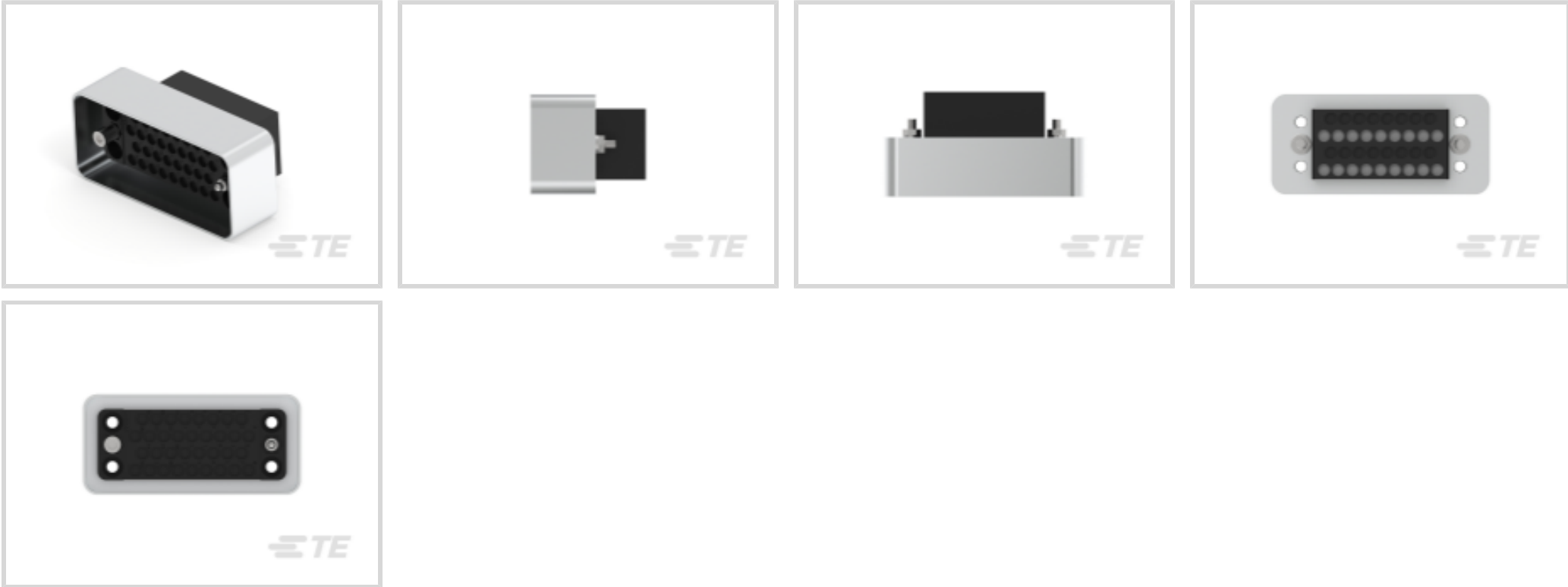




Connectors > Rectangular Connectors > Standard Rectangular Connectors



Connector Product Type: **Housing**
Connector & Housing Type: **Receptacle**
Termination Method to Wire & Cable: **Crimp**
Connector System: **Cable-to-Cable**
Contact Retention Within Housing: **With**

Features

Product Type Features

Assembly Requirement	Unassembled Kit
Connector Product Type	Housing
Connector & Housing Type	Receptacle
Connector System	Cable-to-Cable
Sealable	No
Connector & Contact Terminates To	Wire & Cable

Configuration Features

Number of Signal Positions	34
Number of Power Positions	34
Number of Positions	34
Number of Rows	4

Electrical Characteristics

Operating Voltage	250 VAC
-------------------	---------

Body Features

--	--



Primary Product Color	Black
-----------------------	-------

Contact Features

Contact Type	Socket
Contact Retention Within Housing	With
Contact Current Rating (Max)	13 A

Termination Features

Termination Method to Wire & Cable	Crimp
------------------------------------	-------

Mechanical Attachment

Strain Relief	Without
Panel Mount Feature	With
Panel Mount Feature Type	Screw Mount
Connector Mounting Type	Panel Mount

Housing Features

Housing Material	Polyester GF
Centerline (Pitch)	3.81 mm[.15 in]

Dimensions

Row-to-Row Spacing	4.57 mm[.18 in]
Connector Width	19.05 mm[.75 in]
Connector Height	50.8 mm[1.999 in]
Wire Size	30 – 14 AWG
Connector Length	23.24 mm[.915 in]

Usage Conditions

Operating Temperature Range	-55 – 130 °C[-67 – 266 °F]
-----------------------------	----------------------------

Operation/Application

Circuit Application	Power & Signal
---------------------	----------------

Industry Standards

Glow Wire Rating	Standard Part - Not Glow Wire
UL Flammability Rating	UL 94V-0

Packaging Features

Packaging Quantity	1
Packaging Method	Bag & Box



Product Compliance

For compliance documentation, visit the product page on TE.com>

EU RoHS Directive 2011/65/EU	Compliant
EU ELV Directive 2000/53/EC	Compliant
China RoHS 2 Directive MIIT Order No 32, 2016	No Restricted Materials Above Threshold
EU REACH Regulation (EC) No. 1907/2006	Current ECHA Candidate List: JAN 2025 (247) Candidate List Declared Against: JAN 2025 (247) Does not contain REACH SVHC
Halogen Content	Not Low Halogen - contains Br or Cl > 900 ppm.
Solder Process Capability	Wave solder capable to 265°C

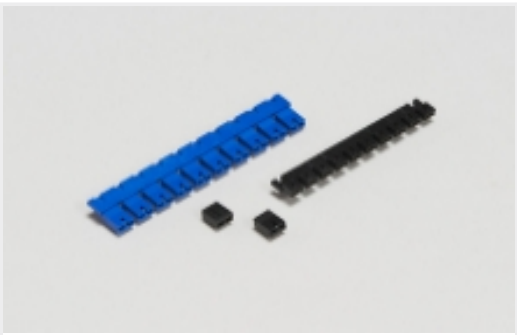
Product Compliance Disclaimer

This information is provided based on reasonable inquiry of our suppliers and represents our current actual knowledge based on the information they provided. This information is subject to change. The part numbers that TE has identified as EU RoHS compliant have a maximum concentration of 0.1% by weight in homogenous materials for lead, hexavalent chromium, mercury, PBB, PBDE, DBP, BBP, DEHP, DIBP, and 0.01% for cadmium, or qualify for an exemption to these limits as defined in the Annexes of Directive 2011/65/EU (RoHS2). Finished electrical and electronic equipment products will be CE marked as required by Directive 2011/65/EU. Components may not be CE marked. Additionally, the part numbers that TE has identified as EU ELV compliant have a maximum concentration of 0.1% by weight in homogenous materials for lead, hexavalent chromium, and mercury, and 0.01% for cadmium, or qualify for an exemption to these limits as defined in the Annexes of Directive 2000/53/EC (ELV). Regarding the REACH Regulation, the information TE provides on SVHC in articles for this part number is based on the latest European Chemicals Agency (ECHA) ‘Guidance on requirements for substances in articles’ posted at this URL: <https://echa.europa.eu/guidance-documents/guidance-on-reach>

Compatible Parts



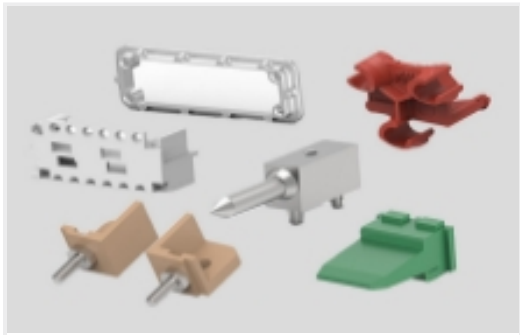
Also in the Series | AMP M Series



Board-to-Board Jumpers & Shunts(5)



Connector Contacts(51)



Connector Hardware(47)



Power Contacts(51)



Rectangular Connector Housings(77)



Rectangular Power Connectors(82)

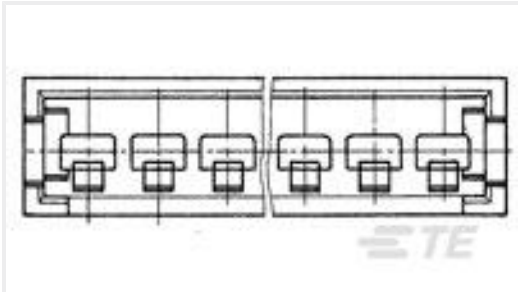


Standard Rectangular Connectors(81)

Customers Also Bought



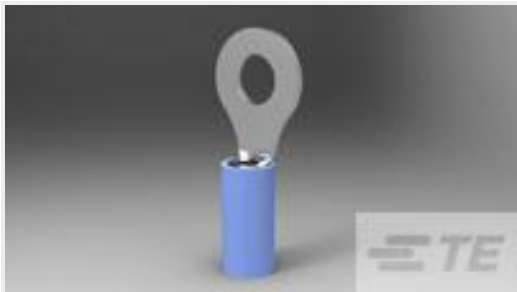
TE Part #280358
AMPMODU II REC. HSG, SINGLE ROW 2 POS



TE Part #280628
AMPMODU II COSI PIN HSG, SGL ROW, 2 POS.



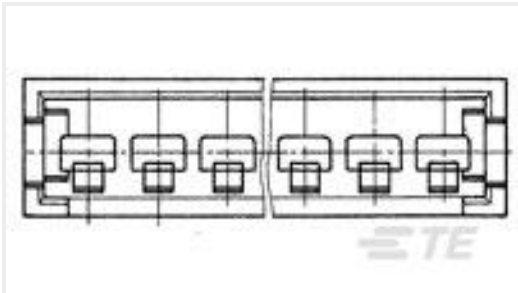
TE Part #160922-2
FF 110 REC 0.2-0.5MM2 TPBR



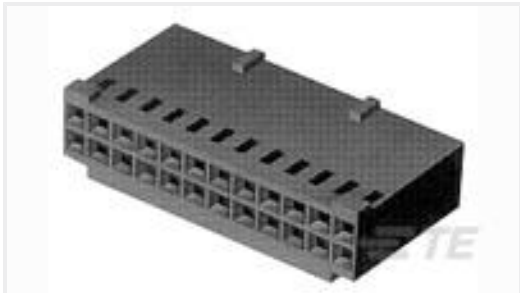
TE Part #320563
TERMINAL, PIDG R 16-14 1/4



TE Part #280361
AMPMODU II REC. HSG, SINGLE ROW 8 POS



TE Part #280630
AMPMODU II COSI PIN HSG, SGL ROW, 6 POS.



TE Part #280365
AMPMODU, DBL ROW, CONTACT REC

Documents

Product Drawings
34 UNASSM KIT,M SERIES

English

CAD Files
Customer View Model
ENG_CVM_213624-1_A.3d_igs.zip

English

Customer View Model



[ENG_CVM_213624-1_A.3d_stp.zip](#)

English

Customer View Model

[ENG_CVM_213624-1_A.2d_dxf.zip](#)

English

3D PDF

English

By downloading the CAD file I accept and agree to the [Terms and Conditions](#) of use.

Product Specifications

Connector, Series "M"

English

Product Specification

English