



Connectors > Rectangular Connectors > Standard Rectangular Connectors



Connector Product Type: **Housing**
Connector & Housing Type: **Plug**
Termination Method to Wire & Cable: **Crimp**
Connector System: **Cable-to-Cable**
Contact Retention Within Housing: **With**

Features

Product Type Features

Assembly Requirement	Unassembled Kit
Connector Product Type	Housing
Connector & Housing Type	Plug
Connector System	Cable-to-Cable
Sealable	No
Connector & Contact Terminates To	Wire & Cable

Configuration Features

Number of Signal Positions	34
Number of Power Positions	4
Number of Positions	34
Number of Rows	4

Electrical Characteristics

Operating Voltage	250 VAC
-------------------	---------

Body Features



Primary Product Color	Black
-----------------------	-------

Contact Features

Contact Type	Pin
Contact Retention Within Housing	With
Contact Current Rating (Max)	13 A

Termination Features

Termination Method to Wire & Cable	Crimp
------------------------------------	-------

Mechanical Attachment

Strain Relief	With
Panel Mount Feature	Without
Contact Retention Type Within Housing	Locking Spring
Connector Mounting Type	Cable Mount (Free-Hanging)

Housing Features

Housing Material	Polyester
Centerline (Pitch)	3.81 mm[.15 in]

Dimensions

Row-to-Row Spacing	4.57 mm[.18 in]
Connector Width	21.03 mm[.828 in]
Connector Height	41.15 mm[1.62 in]
Wire Size	30 – 14 AWG
Connector Length	52.07 mm[2.05 in]

Usage Conditions

Operating Temperature Range	-55 – 130 °C[-67 – 266 °F]
-----------------------------	----------------------------

Operation/Application

Circuit Application	Power & Signal
---------------------	----------------

Industry Standards

Compatible With Agency/Standards Products	CSA, UL
Compatible With Approved Standards Products	UL E28476
Glow Wire Rating	Standard Part - Not Glow Wire
UL Flammability Rating	UL 94V-0

Packaging Features

--	--



Packaging Quantity	1
Packaging Method	Bag

Product Compliance

For compliance documentation, visit the product page on TE.com>

EU RoHS Directive 2011/65/EU	Compliant
EU ELV Directive 2000/53/EC	Compliant
China RoHS 2 Directive MIIT Order No 32, 2016	No Restricted Materials Above Threshold
EU REACH Regulation (EC) No. 1907/2006	Current ECHA Candidate List: JAN 2025 (247) Candidate List Declared Against: JUNE 2024 (241) Does not contain REACH SVHC
Halogen Content	Not Low Halogen - contains Br or Cl > 900 ppm.
Solder Process Capability	Not applicable for solder process capability

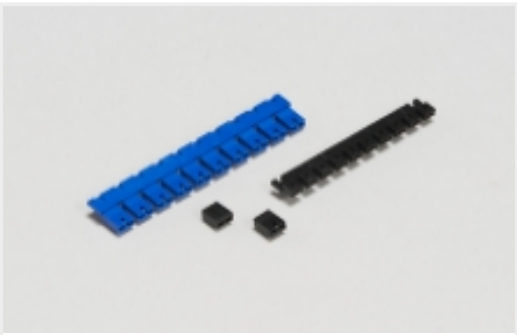
Product Compliance Disclaimer

This information is provided based on reasonable inquiry of our suppliers and represents our current actual knowledge based on the information they provided. This information is subject to change. The part numbers that TE has identified as EU RoHS compliant have a maximum concentration of 0.1% by weight in homogenous materials for lead, hexavalent chromium, mercury, PBB, PBDE, DBP, BBP, DEHP, DIBP, and 0.01% for cadmium, or qualify for an exemption to these limits as defined in the Annexes of Directive 2011/65/EU (RoHS2). Finished electrical and electronic equipment products will be CE marked as required by Directive 2011/65/EU. Components may not be CE marked. Additionally, the part numbers that TE has identified as EU ELV compliant have a maximum concentration of 0.1% by weight in homogenous materials for lead, hexavalent chromium, and mercury, and 0.01% for cadmium, or qualify for an exemption to these limits as defined in the Annexes of Directive 2000/53/EC (ELV). Regarding the REACH Regulation, the information TE provides on SVHC in articles for this part number is based on the latest European Chemicals Agency (ECHA) 'Guidance on requirements for substances in articles' posted at this URL: <https://echa.europa.eu/guidance-documents/guidance-on-reach>

Compatible Parts



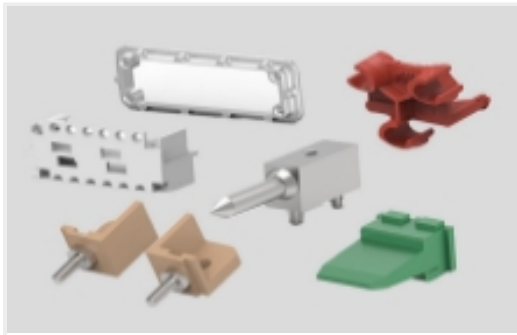
Also in the Series | AMP M Series



Board-to-Board Jumpers & Shunts(5)



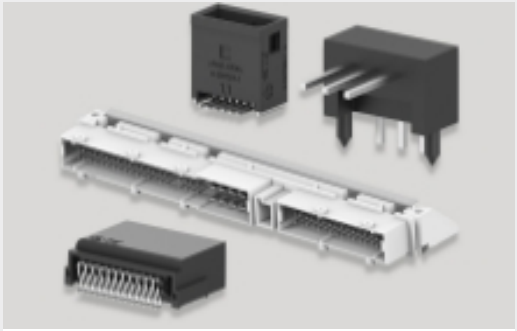
Connector Caps & Covers(14)



Connector Hardware(47)



Connector Strain Relief(13)



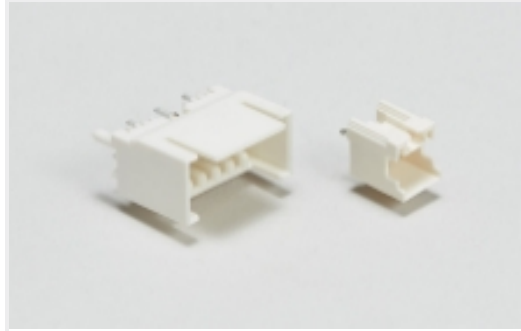
PCB Headers & Receptacles(9)



Rack & Panel Connectors(1)



Rectangular Power Connectors(82)



Wire-to-Board Headers & Receptacles (1)

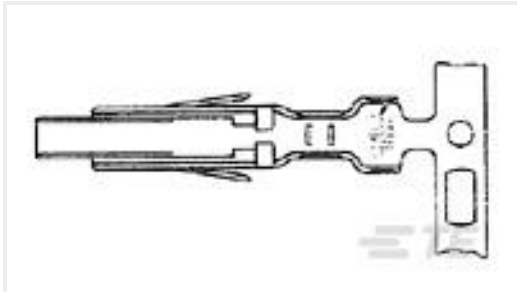
Customers Also Bought



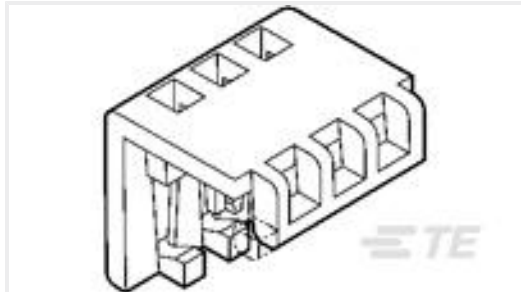
TE Part #1-745493-4
15 HDE MS RCPT,22-26,LEAD FREE



TE Part #342368-1
187 FASTON,REC.,30-24 AWG,BR



TE Part #170311-1
CONTACT FOR DRAWER CONN



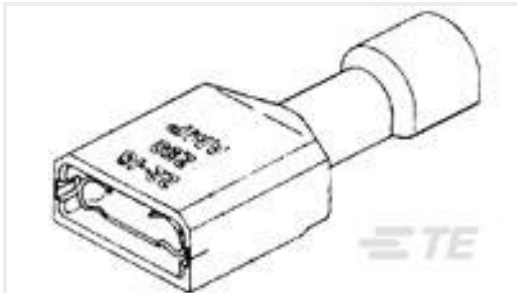
TE Part #1-643075-0
10P MTA100 MOLDED COVER



TE Part #3-747579-2
SHLDNG FERRULE, PLTD, BULK PKG



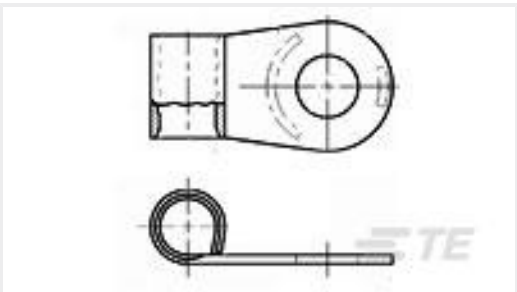
TE Part #32996
TERMINAL,SOLIS R 8 8



TE Part #3-520117-2
ULTRAFast 250 ASSY REC 16-14 TPBR LP



TE Part #5172070-1
DRAWER CONN. FEMALE HSG ASSY 8



TE Part #321275
TERMINAL,SOLIS FLAG R 4 1/4



TE Part #4-641190-2
12P MTA100 CONN ASSY RED LF

Documents



Product Drawings

M-SER 34P ASSM KIT(CC,JS)V.35

English

CAD Files

Customer View Model

ENG_CVM_CVM_213932-2_J.3d_stp.zip

English

Customer View Model

ENG_CVM_CVM_213932-2_J.2d_dxf.zip

English

Customer View Model

ENG_CVM_CVM_213932-2_J.3d_igs.zip

English

3D PDF

3D

Customer View Model

ENG_CVM_213932-2_K.3d_igs.zip

English

Customer View Model

ENG_CVM_213932-2_K.3d_stp.zip

English

Customer View Model

ENG_CVM_213932-2_K.2d_dxf.zip

English

3D PDF

English

By downloading the CAD file I accept and agree to the [Terms and Conditions](#) of use.

Datasheets & Catalog Pages

M_SERIES_PIN_AND_SOCKET_CONNECTORS

English