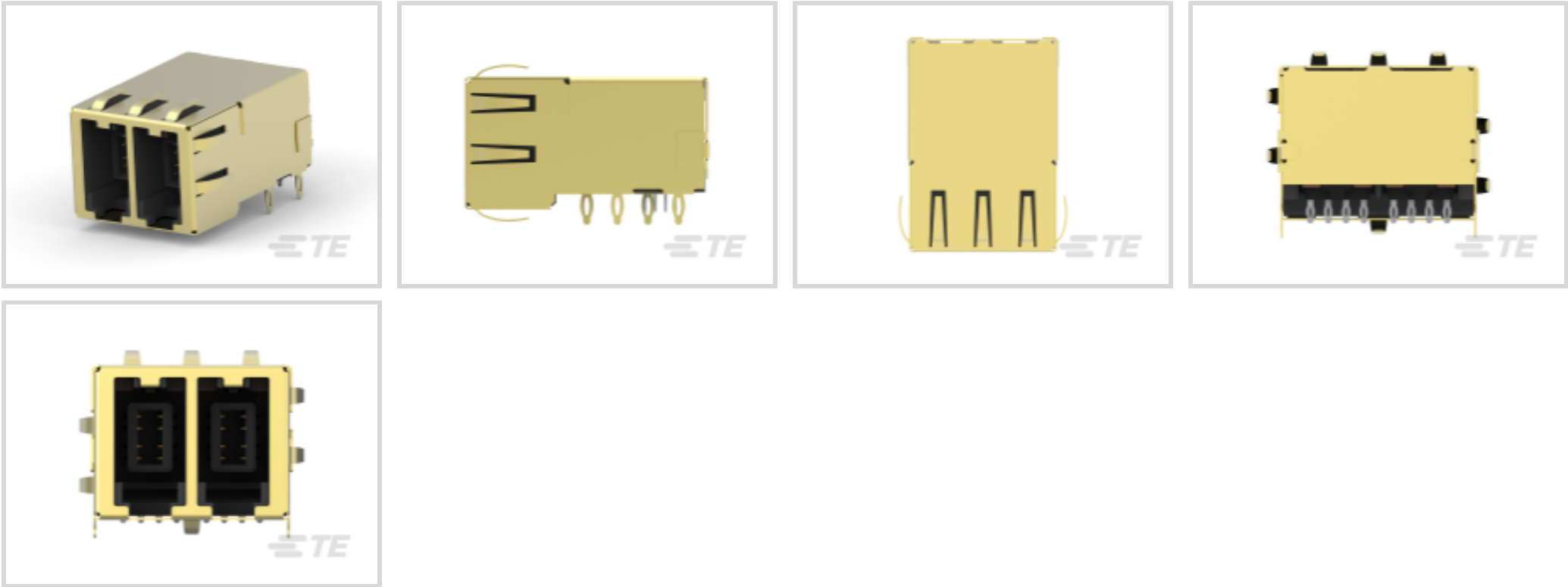




Connectors > Modular Jacks & Plugs > RJ Point Five Connectors > RJ Point Five Plug Kit: Single Plug



Port Configuration: **Multiple Ports**

Multiple Port Configuration: **Ganged**

Port Matrix Configuration: **1 x 2**

Modular Jacks & Plugs Products: **RJ point five**

Connector Contact Density: **High**

[All RJ Point Five Plug Kit: Single Plug \(3\)](#)

Features

Product Type Features

| | |
|-----------------------------------|-----------------------|
| Connector System | Cable-to-Board |
| Modular Jacks & Plugs Products | RJ point five |
| Modular Connector Style | Jack |
| Connector & Contact Terminates To | Printed Circuit Board |

Configuration Features

| | |
|-----------------------------|----------------|
| Number of Positions | 8 |
| PCB Mount Orientation | Right Angle |
| Port Configuration | Multiple Ports |
| Multiple Port Configuration | Ganged |
| Port Matrix Configuration | 1 x 2 |
| Connector Contact Density | High |
| Number of Loaded Positions | 8 |
| EMI Finger Location | Bottom, Sides |

Signal Characteristics



| | |
|-----------|-----------|
| Data Rate | 1000 Mb/s |
|-----------|-----------|

Body Features

| | |
|--------------------------------|-----------------------|
| Modular Jack Latch Orientation | Standard - Latch Down |
|--------------------------------|-----------------------|

Contact Features

| | |
|------------------------------|------------|
| Contact Current Rating (Max) | .02 A, 1 A |
|------------------------------|------------|

Mechanical Attachment

| | |
|-------------------------|-------------|
| Connector Mounting Type | Board Mount |
|-------------------------|-------------|

Housing Features

| | |
|-----------------------|-----------------------------------|
| Mating Entry Location | Side |
| Centerline (Pitch) | 1.25 mm, 1.3 mm[.049 in][.051 in] |

Usage Conditions

| | |
|-----------------------------|------------------------|
| Operating Temperature Range | 0 – 70 °C[32 – 158 °F] |
|-----------------------------|------------------------|

Operation/Application

| | |
|---------------------|-----------|
| Indicator Type | Lightpipe |
| Circuit Application | Signal |
| Shielded | Yes |

Industry Standards

| | |
|----------------------|--------|
| Performance Category | Cat 5e |
|----------------------|--------|

Packaging Features

| | |
|------------------|------------------|
| Packaging Method | Box & Tray, Tray |
|------------------|------------------|

Product Compliance

For compliance documentation, visit the product page on TE.com>

| | |
|---|---|
| EU RoHS Directive 2011/65/EU | Compliant |
| EU ELV Directive 2000/53/EC | Compliant |
| China RoHS 2 Directive MIIT Order No 32, 2016 | No Restricted Materials Above Threshold |
| EU REACH Regulation (EC) No. 1907/2006 | Current ECHA Candidate List: JAN 2025 (247) Candidate List Declared Against: JAN 2025 (247) SVHC > Threshold: |



1-BUTANESULFONIC ACID,
1,1,2,2,3,3,4,4,4-NONAFLUORO-,
POTASSIUM SALT (1:1) (.13% in
10625381716)

Article Safe Usage Statements:
Do not eat, drink or smoke when using this product. Wash thoroughly after handling. Recycle if possible and dispose of the article by following all applicable governmental regulations relevant to your geographic location.

| | |
|---------------------------|--|
| Halogen Content | Not Low Halogen - contains Br or Cl > 900 ppm. |
| Solder Process Capability | Not applicable for solder process capability |

Product Compliance Disclaimer

This information is provided based on reasonable inquiry of our suppliers and represents our current actual knowledge based on the information they provided. This information is subject to change. The part numbers that TE has identified as EU RoHS compliant have a maximum concentration of 0.1% by weight in homogenous materials for lead, hexavalent chromium, mercury, PBB, PBDE, DBP, BBP, DEHP, DIBP, and 0.01% for cadmium, or qualify for an exemption to these limits as defined in the Annexes of Directive 2011/65/EU (RoHS2). Finished electrical and electronic equipment products will be CE marked as required by Directive 2011/65/EU. Components may not be CE marked. Additionally, the part numbers that TE has identified as EU ELV compliant have a maximum concentration of 0.1% by weight in homogenous materials for lead, hexavalent chromium, and mercury, and 0.01% for cadmium, or qualify for an exemption to these limits as defined in the Annexes of Directive 2000/53/EC (ELV). Regarding the REACH Regulation, the information TE provides on SVHC in articles for this part number is based on the latest European Chemicals Agency (ECHA) 'Guidance on requirements for substances in articles' posted at this URL: <https://echa.europa.eu/guidance-documents/guidance-on-reach>

Compatible Parts



TE Part # CAT-P7553-C76264
RJ Point Five Plug Kit: Single Plug



TE Part # 2185218-1
ASSY, EXTRACTION TOOL

Customers Also Bought



TE Part #2-2347090-1
SOCKET 4677 DG1.0 FOR ODM



TE Part #2331813-2
CABLE REC ASSY, 84 P, VERT, SLIVER 2.0



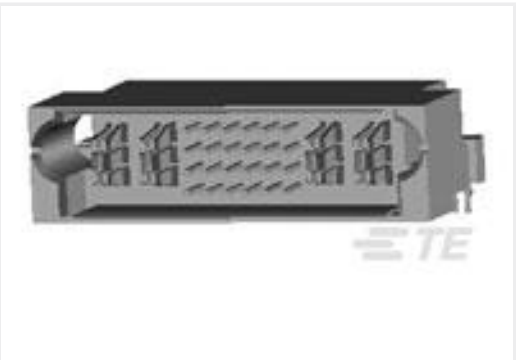
TE Part #5177986-4
0.8FH,P05H.5,100,08/Sn,TR,SC



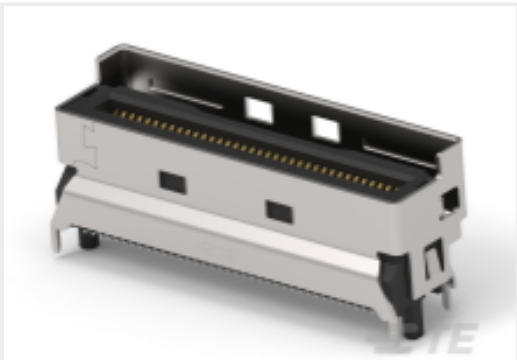
TE Part #7-1658013-3
MSB0.80PL5ASY84DP,GP,10,VCTR



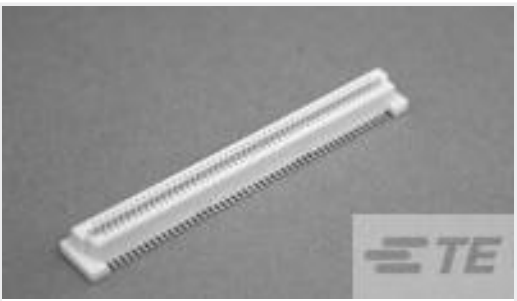
TE Part #1-2351053-2
LGA4677 SOCKET COVER



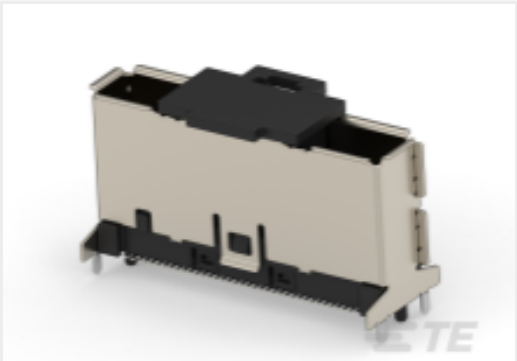
TE Part #6450830-5
MBXL R/A HDR 2P + 24S + 2P



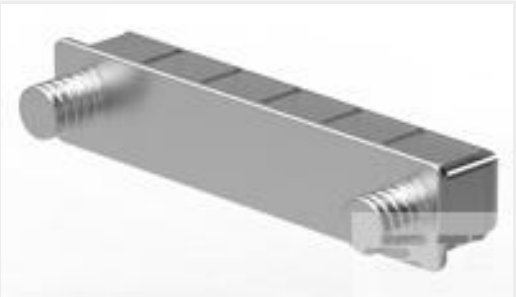
TE Part #2379397-7
MCIO INTERGRATED CONN, V/T,8X,
SMT TYPE



TE Part #5177985-1
0.8FH,R05H.5,040,08/Sn,TR,SC



TE Part #2291316-1
RCPT CONN VERTICAL 74 POSN
SLIVER



TE Part #2149151-1
EMI/Dust Cover, CFP

Documents

CAD Files

3D PDF

3D

Customer View Model

ENG_CVM_CVM_2170129-1_A2.2d_dxf.zip

English

Customer View Model

ENG_CVM_CVM_2170129-1_A2.3d_igs.zip

English

Customer View Model

ENG_CVM_CVM_2170129-1_A2.3d_stp.zip

English

By downloading the CAD file I accept and agree to the [Terms and Conditions](#) of use.

Product Specifications

Application Specification

English

Agency Approvals

UL Report

English