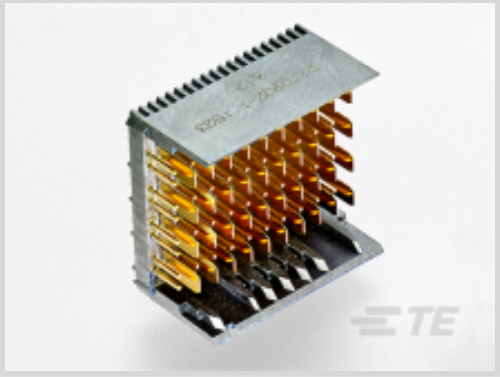




Connectors > PCB Connectors > Backplane Connectors > High Speed Backplane Connectors



Number of Positions: 80
Row-to-Row Spacing: 4.5 mm [.177 in]
Mating Alignment: With
Mating Alignment Type: Polarization
Number of Rows: 8

Features

Product Type Features

Signal Arrangement	Differential
Connector & Contact Terminates To	Printed Circuit Board
Connector System	Board-to-Board
PCB Connector Type	PCB Mount Header
Shroud Style	Unshrouded

Configuration Features

Pairs per Column	4
Card Slot Centerline	25.4 mm
Number of Positions	80
Number of Rows	8
Number of Columns	10
PCB Mount Orientation	Vertical

Electrical Characteristics

Operating Voltage	30 VDC
-------------------	--------

Body Features

Primary Product Color	Black
-----------------------	-------

Contact Features

--	--



PCB Contact Termination Area Plating Material Thickness	.5 – 2.5 µm[20 – 100 µin]
Contact Mating Area Plating Material	Gold (Au)
Contact Mating Area Length	4.3 mm[.169 in]
Contact Base Material	Phosphor Bronze
PCB Contact Termination Area Plating Material	Tin
PCB Contact Termination Area Plating Material Finish	Matte
Contact Type	Pin
Contact Mating Area Plating Material Thickness	.76 µm[30 µin]
Contact Current Rating (Max)	.5 A

Termination Features

Termination Method to PCB	Through Hole - Press-Fit
---------------------------	--------------------------

Mechanical Attachment

Mating Alignment	With
Mating Alignment Type	Polarization
Connector Mounting Type	Board Mount

Housing Features

Housing Material	LCP
Number of Shrouded Sides	0
Centerline (Pitch)	2.5 mm[.098 in]

Dimensions

PCB Hole Diameter	.36 mm
Row-to-Row Spacing	4.5 mm[.177 in]

Usage Conditions

Operating Temperature Range	-55 – 85 °C[-67 – 185 °F]
-----------------------------	---------------------------

Operation/Application

Durability Rating	200 Cycles
Circuit Application	Signal

Industry Standards

UL Flammability Rating	UL 94V-0
------------------------	----------

Packaging Features

Packaging Method	Box & Tube
------------------	------------



Product Compliance

For compliance documentation, visit the product page on TE.com>

EU RoHS Directive 2011/65/EU	Compliant
EU ELV Directive 2000/53/EC	Compliant
China RoHS 2 Directive MIIT Order No 32, 2016	No Restricted Materials Above Threshold
EU REACH Regulation (EC) No. 1907/2006	Current ECHA Candidate List: JAN 2025 (247) Candidate List Declared Against: JAN 2025 (247) Does not contain REACH SVHC
Halogen Content	Low Halogen - Br, Cl, F, I < 900 ppm per homogenous material. Also BFR/CFR/PVC Free
Solder Process Capability	Not applicable for solder process capability

Product Compliance Disclaimer

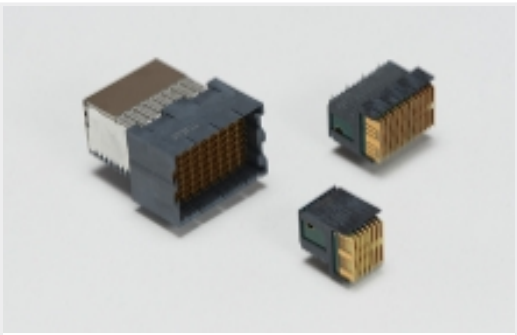
This information is provided based on reasonable inquiry of our suppliers and represents our current actual knowledge based on the information they provided. This information is subject to change. The part numbers that TE has identified as EU RoHS compliant have a maximum concentration of 0.1% by weight in homogenous materials for lead, hexavalent chromium, mercury, PBB, PBDE, DBP, BBP, DEHP, DIBP, and 0.01% for cadmium, or qualify for an exemption to these limits as defined in the Annexes of Directive 2011/65/EU (RoHS2). Finished electrical and electronic equipment products will be CE marked as required by Directive 2011/65/EU. Components may not be CE marked. Additionally, the part numbers that TE has identified as EU ELV compliant have a maximum concentration of 0.1% by weight in homogenous materials for lead, hexavalent chromium, and mercury, and 0.01% for cadmium, or qualify for an exemption to these limits as defined in the Annexes of Directive 2000/53/EC (ELV). Regarding the REACH Regulation, the information TE provides on SVHC in articles for this part number is based on the latest European Chemicals Agency (ECHA) 'Guidance on requirements for substances in articles' posted at this URL: <https://echa.europa.eu/guidance-documents/guidance-on-reach>

Compatible Parts



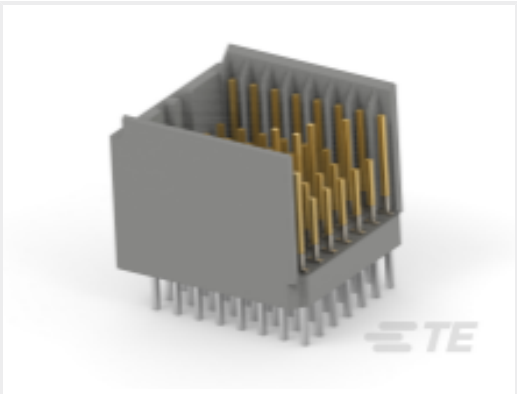
TE Part # 2170903-1
RECEPTACLE HM-EZD+, 4PAIRS
10COLUMNS

Also in the Series | Z-PACK HM-eZd+

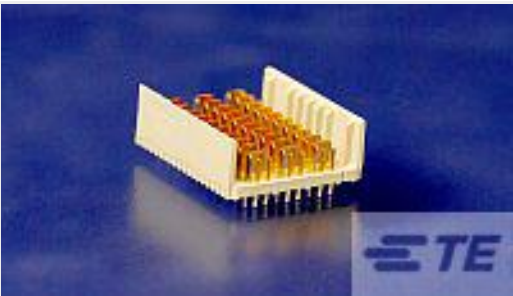


High Speed Backplane Connectors(4)

Customers Also Bought



TE Part #2347091-1
2MM HM MALE CONNECTOR, COL 8, M1



TE Part #2170245-1
HMZD+,3PAIRS,10COLS,VERTICAL, ASSEMBLY



TE Part #2065883-1
Zd Plus, 3 pair receptacle ass



TE Part #1410140-1
MULTIGIG RT T2 .8" BP FULL CNT



TE Part #1410142-1
MULTIGIG RT T2 .8" BP FULL RGH



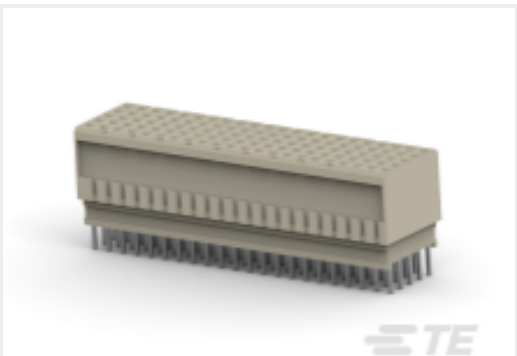
TE Part #2065657-1
zd Plus, 4 pair, receptacle assy



TE Part #6450863-5
MBXLE VERT RCPT 7ACP



TE Part #1-6450869-0
V/R
2ACP+8S+4ACP+16S+2ACP+12S+2ACP



TE Part #CAT-472-Z125535
Hard Metric Backplane Receptacle Connector: Mezzanine, 2mm

Documents

CAD Files

3D PDF

3D

Customer View Model

ENG_CVM_CVM_2170902-1_A.2d_dxf.zip

English

Customer View Model

ENG_CVM_CVM_2170902-1_A.3d_igs.zip



English

Customer View Model

[ENG_CVM_CVM_2170902-1_A.3d_stp.zip](#)

English

By downloading the CAD file I accept and agree to the [Terms and Conditions](#) of use.

Product Specifications

[Application Specification](#)

English