



Passive Components > Resistors > Surface Mount Resistors



Resistor Type: **Power Resistor**

Element Type: **Thick Film**

Package Size Code: **2512**

Power Rating: **3 W**

Passive Component Tolerance: **5 %**

Features

Product Type Features

Resistor Type	Power Resistor
Element Type	Thick Film
Package Size Code	2512

Electrical Characteristics

Operating Voltage	250 V
Power Rating	3 W
Passive Component Tolerance	5 %

Termination Features

Surface Mount Resistor Termination Type	Solder
Number of Terminations	2

Dimensions

Product Height	45 mm[1.17 in]
Product Length	320 mm[12.6 in]
Product Width	260 mm[10.24 in]

Packaging Features

Packaging Method	Folder
------------------	--------



Product Compliance


For compliance documentation, visit the product page on TE.com>

EU RoHS Directive 2011/65/EU	Compliant with Exemptions
EU ELV Directive 2000/53/EC	Compliant with Exemptions
China RoHS 2 Directive MIIT Order No 32, 2016	Restricted Materials Above Threshold
EU REACH Regulation (EC) No. 1907/2006	Current ECHA Candidate List: JAN 2025 (247) Candidate List Declared Against: JUNE 2023 (235) Does not contain REACH SVHC
Halogen Content	BFR/CFR/PVC Free, but Br/Cl >900 ppm in other sources.
Solder Process Capability	Reflow solder capable to 260°C


Product Compliance Disclaimer

This information is provided based on reasonable inquiry of our suppliers and represents our current actual knowledge based on the information they provided. This information is subject to change. The part numbers that TE has identified as EU RoHS compliant have a maximum concentration of 0.1% by weight in homogenous materials for lead, hexavalent chromium, mercury, PBB, PBDE, DBP, BBP, DEHP, DIBP, and 0.01% for cadmium, or qualify for an exemption to these limits as defined in the Annexes of Directive 2011/65/EU (RoHS2). Finished electrical and electronic equipment products will be CE marked as required by Directive 2011/65/EU. Components may not be CE marked. Additionally, the part numbers that TE has identified as EU ELV compliant have a maximum concentration of 0.1% by weight in homogenous materials for lead, hexavalent chromium, and mercury, and 0.01% for cadmium, or qualify for an exemption to these limits as defined in the Annexes of Directive 2000/53/EC (ELV). Regarding the REACH Regulation, the information TE provides on SVHC in articles for this part number is based on the latest European Chemicals Agency (ECHA) 'Guidance on requirements for substances in articles' posted at this URL: <https://echa.europa.eu/guidance-documents/guidance-on-reach>

Compatible Parts

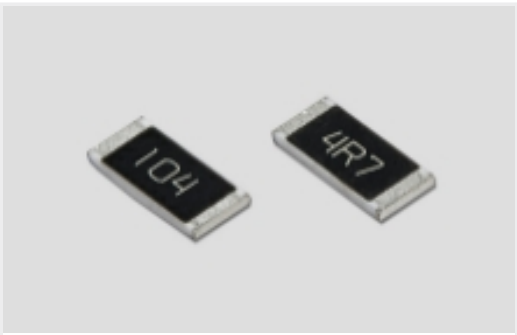


TE Part # 2176439-7
3522 3W 1% ZR, 1R0 - 1M0 LAB-KIT



TE Part # 2176439-6
3521 2W 1% 1R0-1M0 LAB-KIT

Also in the Series | CGS 3522



Surface Mount Resistors(211)

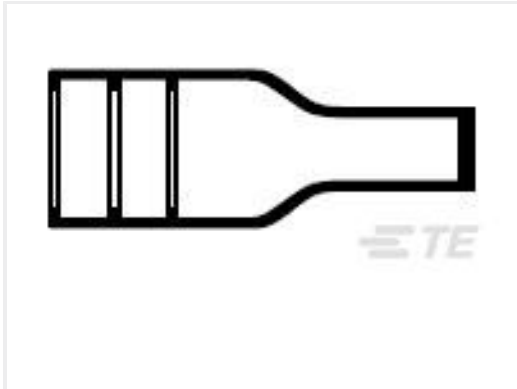
Customers Also Bought



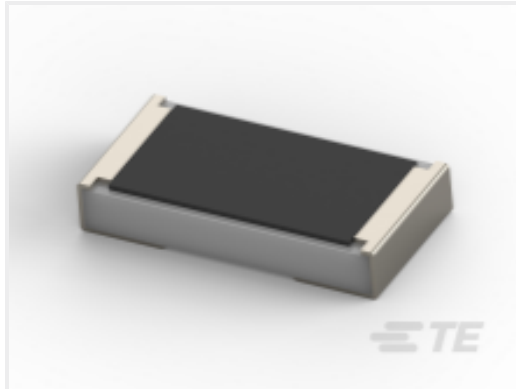
TE Part #166873-5
96P.MT.CONN.KIT ASS



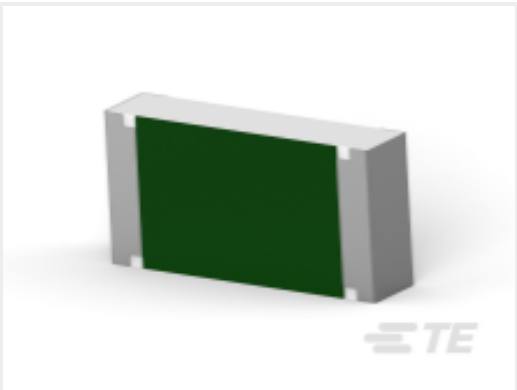
TE Part #178216-2
DYNAMIC 3400 HDR H 12P ASSY



TE Part #814346-000
202D132-25-0



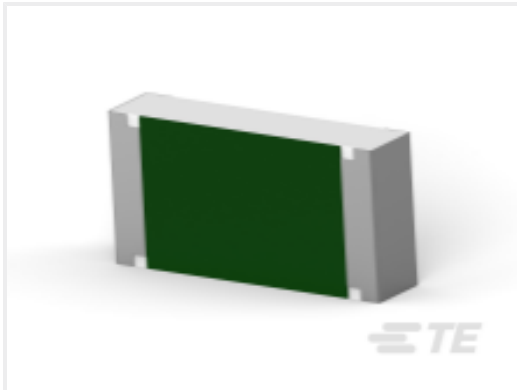
TE Part #CAT-C339-A76B
SMD Power Resistor: 3 Watt, 1% Tol



TE Part #6-2176397-1
3502 330R 1%



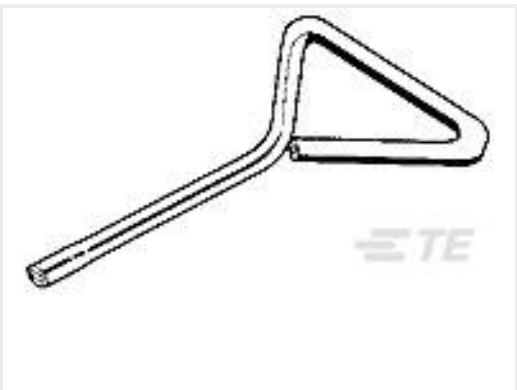
TE Part #177907-1
POWER DBL LOCK CAP P/M 3P



TE Part #5-2176397-8
3502 240R 1%



TE Part #91561-1
CCII D-3 3L REC TAB 16-14 ASSY



TE Part #919041-1
TAB CUTTING TOOL DYNAMIC CONN.

Documents

Product Drawings

3522 3W 5% ZR, 1R0 - 1M0 LAB-KIT

English

3522 3W 5% ZR, 1R0 - 1M0 LAB-KIT

English

Datasheets & Catalog Pages

SMD POWER RESISTORS - TYPE 3522 SERIES

English

3522J-LAB-KIT

Surface Mount Power Resistor, Thick Film, 2512, 3 W, 5 %, Solder, 2 Terminations, 45 mm [1.17 in] Height, 320 mm [12.6 in] Length, CGS 3522

