



QSFP/QSFP+

TE Internal #: 2214574-3

QSFP+, Cage Assembly with Integrated Connector, .8mm [.032in]
Centerline, Sealable, Signal, Operating Temperature Range -55 – 105 °C [-67 – 221 °F]

[View on TE.com >](#)

Connectors > Pluggable IO Connectors & Cages



Form Factor: **QSFP+**
Pluggable I/O Product Type: **Cage Assembly with Integrated Connector**
Centerline (Pitch): **.8 mm [.032 in]**
Sealable: **Yes**
Circuit Application: **Signal**

Features

Product Type Features

| | |
|----------------------------|-----------------------------------------|
| Cage Type | Stacked |
| Form Factor | QSFP+ |
| Pluggable I/O Product Type | Cage Assembly with Integrated Connector |
| Sealable | Yes |

Configuration Features

| | |
|-------------------------------------|-------|
| Number of Rear EONs per Port Column | 0 |
| Number of Positions | 152 |
| Number of Ports | 4 |
| Port Matrix Configuration | 2 x 2 |

Electrical Characteristics

| | |
|-----------------|---------|
| Data Rate (Max) | 14 Gb/s |
|-----------------|---------|

Contact Features

| | |
|------------------------------------------------|----------------|
| Contact Underplating Material | Tin |
| Contact Mating Area Plating Material | Gold (Au) |
| PCB Contact Termination Area Plating Material | Gold |
| Contact Mating Area Plating Material Thickness | .76 µm[30 µin] |

Termination Features



| | |
|--------------------------------|--------------------------|
| Termination Method to PCB | Through Hole - Press-Fit |
| Termination Post & Tail Length | 2 mm[.079 in] |

Housing Features

| | |
|--------------------|----------------|
| Cage Material | Nickel Silver |
| Centerline (Pitch) | .8 mm[.032 in] |

Dimensions

| | |
|-----------------------------|------------------|
| PCB Thickness (Recommended) | 1.57 mm[.062 in] |
|-----------------------------|------------------|

Usage Conditions

| | |
|-----------------------------|----------------------------|
| Operating Temperature Range | -55 – 105 °C[-67 – 221 °F] |
|-----------------------------|----------------------------|

Operation/Application

| | |
|----------------------------|-----------------------------|
| Pluggable I/O Applications | SFP+ Stacked Belly-to-Belly |
| Heat Sink Compatible | No |
| Circuit Application | Signal |

Industry Standards

| | |
|------------------------|----------|
| UL Flammability Rating | UL 94V-0 |
|------------------------|----------|

Packaging Features

| | |
|------------------|------------|
| Packaging Method | Box & Tray |
|------------------|------------|

Other

| | |
|------------------------------|--------------------|
| Included Lightpipe | Yes |
| EMI Containment Feature Type | Elastomeric Gasket |

Product Compliance

For compliance documentation, visit the product page on TE.com>

| | |
|-----------------------------------------------|-------------------------------------------------------------------------------------------------------------------------------|
| EU RoHS Directive 2011/65/EU | Compliant |
| EU ELV Directive 2000/53/EC | Compliant |
| China RoHS 2 Directive MIIT Order No 32, 2016 | No Restricted Materials Above Threshold |
| EU REACH Regulation (EC) No. 1907/2006 | Current ECHA Candidate List: JAN 2025 (247) Candidate List Declared Against: JAN 2025 (247) Does not contain REACH SVHC |
| Halogen Content | Not Low Halogen - contains Br or Cl > 900 ppm. |
| Solder Process Capability | Not applicable for solder process capability |



Product Compliance Disclaimer

This information is provided based on reasonable inquiry of our suppliers and represents our current actual knowledge based on the information they provided. This information is subject to change. The part numbers that TE has identified as EU RoHS compliant have a maximum concentration of 0.1% by weight in homogenous materials for lead, hexavalent chromium, mercury, PBB, PBDE, DBP, BBP, DEHP, DIBP, and 0.01% for cadmium, or qualify for an exemption to these limits as defined in the Annexes of Directive 2011/65/EU (RoHS2). Finished electrical and electronic equipment products will be CE marked as required by Directive 2011/65/EU. Components may not be CE marked. Additionally, the part numbers that TE has identified as EU ELV compliant have a maximum concentration of 0.1% by weight in homogenous materials for lead, hexavalent chromium, and mercury, and 0.01% for cadmium, or qualify for an exemption to these limits as defined in the Annexes of Directive 2000/53/EC (ELV). Regarding the REACH Regulation, the information TE provides on SVHC in articles for this part number is based on the latest European Chemicals Agency (ECHA) ‘Guidance on requirements for substances in articles’ posted at this URL: <https://echa.europa.eu/guidance-documents/guidance-on-reach>

Compatible Parts



TE Part # 2821033-8
QSFP TO [4]SFP+, 28G, 1M, 33AWG



TE Part # 2110819-1
QSFP+ Enh EVERCLEAR PT Conn



TE Part # CAT-C11-H501142
QSFP to QSFP I/O Cable Assembly: 33 AWG



TE Part # 1-2053638-6
C/A, QSFP, 0.5M, P1-P2, UNEQUALIZED



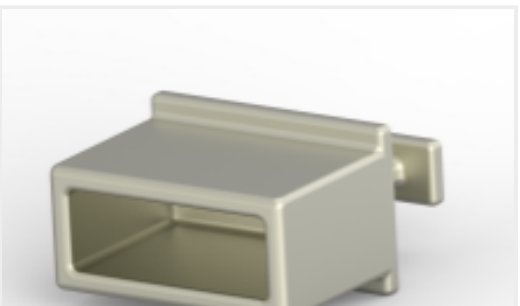
TE Part # 2202165-5
QSFP TO QSFP, 26AWG, FDR, 5.0 METER



TE Part # 2202165-4
QSFP TO QSFP, 26AWG, FDR, 4.0 METER



TE Part # 2053453-5
C/A, QSFP TO 4XSFP+, 4.0M



TE Part # 1888810-2
EMI/Dust Cover,XFP And QSFP

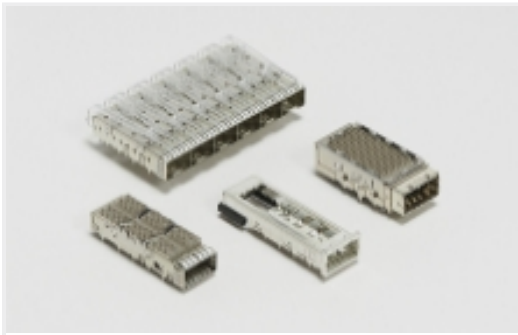


TE Part # CAT-C11-H50111
QSFP-Four SFP+ I/O Cable Assembly 30 AWG

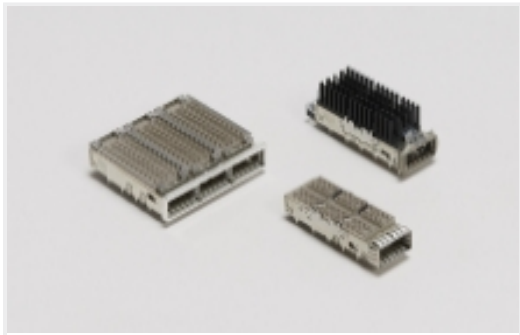
Also in the Series | QSFP/QSFP+



Pluggable I/O Cable Assemblies(13)

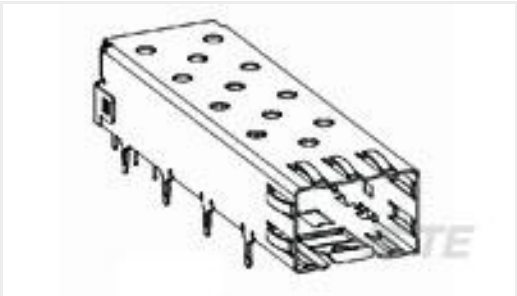


Pluggable IO Connectors & Cages(154)



QSFP, QSFP+ & zQSFP+(154)

Customers Also Bought



TE Part #2227302-1
CAGE ASSY, PRESS FIT, SFP

Documents

Product Drawings

2X2 QSFP CAGE AND PT CONNECTOR ASSEMBLY

English

CAD Files

3D PDF

3D

Customer View Model

ENG_CVM_CVM_2214574-3_B.2d_dxf.zip

English

Customer View Model

ENG_CVM_CVM_2214574-3_B.3d_igs.zip

English

Customer View Model

ENG_CVM_CVM_2214574-3_B.3d_stp.zip

English

By downloading the CAD file I accept and agree to the [Terms and Conditions](#) of use.

Product Specifications

Application Specification

English