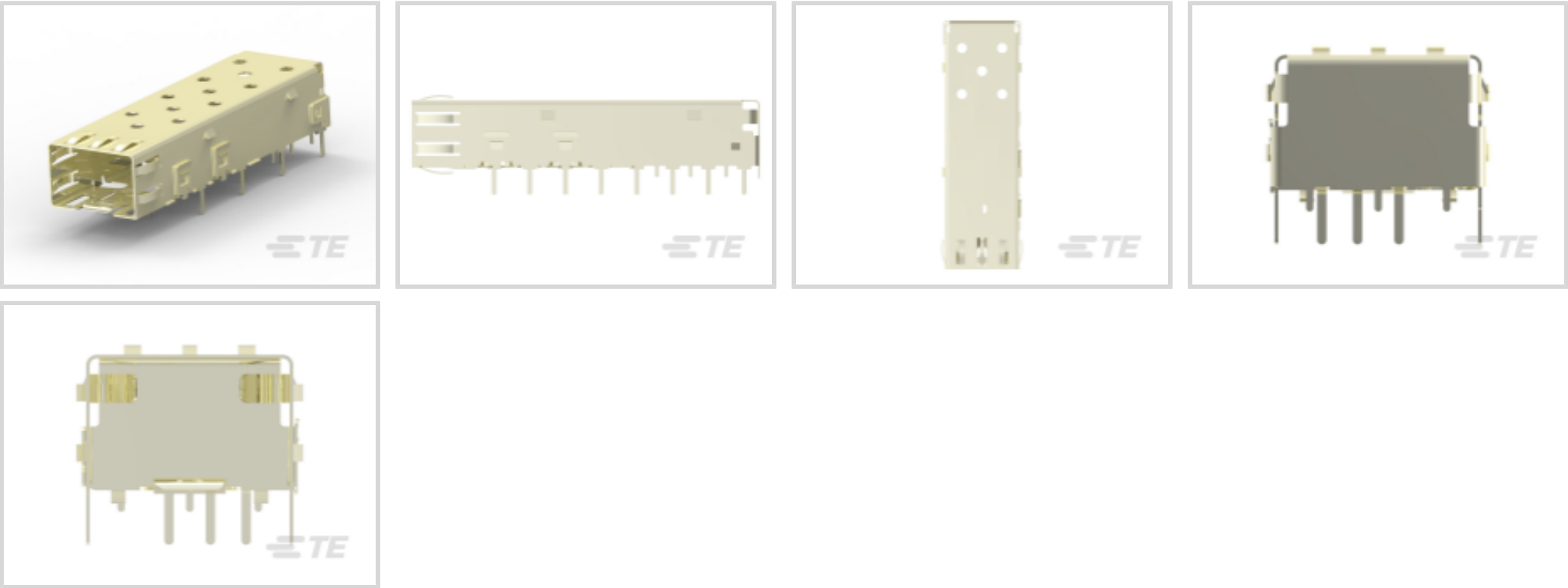




Connectors > Pluggable IO Connectors & Cages



Form Factor: **SFP**

Pluggable I/O Product Type: **Cage**

Sealable: **No**

Operating Temperature Range: **-55 – 85 °C [-67 – 185 °F]**

Data Rate (Max): **4 Gb/s**

Features

Product Type Features

Cage Type	Single
Form Factor	SFP
Pluggable I/O Product Type	Cage
Sealable	No

Configuration Features

Number of Ports	1
Port Matrix Configuration	1 x 1

Electrical Characteristics

Data Rate (Max)	4 Gb/s
-----------------	--------

Contact Features

Tail Plating Material	Tin
-----------------------	-----

Termination Features

Termination Method to PCB	Through Hole - Solder
Termination Post & Tail Length	1.8 mm[.071 in]

Housing Features



Cage Material	Stainless Steel
---------------	-----------------

Dimensions

PCB Thickness (Recommended)	1.5 mm[.059 in]
-----------------------------	-----------------

Usage Conditions

Operating Temperature Range	-55 – 85 °C[-67 – 185 °F]
-----------------------------	---------------------------

Operation/Application

Pluggable I/O Applications	zSFP+ Thermally Enhanced
Heat Sink Compatible	No

Packaging Features

Packaging Method	Tray
------------------	------

Other

Included Lightpipe	No
EMI Containment Feature Type	Internal/External EMI Springs

Product Compliance

For compliance documentation, visit the product page on TE.com>

EU RoHS Directive 2011/65/EU	Compliant
EU ELV Directive 2000/53/EC	Compliant
China RoHS 2 Directive MIIT Order No 32, 2016	No Restricted Materials Above Threshold
EU REACH Regulation (EC) No. 1907/2006	Current ECHA Candidate List: JAN 2025 (247) Candidate List Declared Against: JAN 2025 (247) Does not contain REACH SVHC
Halogen Content	Low Halogen - Br, Cl, F, I < 900 ppm per homogenous material. Also BFR/CFR/PVC Free
Solder Process Capability	Wave solder capable to 260°C

Product Compliance Disclaimer

This information is provided based on reasonable inquiry of our suppliers and represents our current actual knowledge based on the information they provided. This information is subject to change. The part numbers that TE has identified as EU RoHS compliant have a maximum concentration of 0.1% by weight in homogenous materials for lead, hexavalent chromium, mercury, PBB, PBDE, DBP, BBP, DEHP, DIBP, and 0.01% for cadmium, or qualify for an exemption to these limits as defined in the Annexes of Directive 2011/65/EU (RoHS2). Finished electrical and electronic equipment products will be CE marked as required by Directive 2011/65/EU. Components may not be CE marked. Additionally, the part numbers that TE has identified as EU ELV compliant have a maximum concentration of 0.1% by weight in homogenous materials for lead, hexavalent chromium, and mercury, and 0.01% for cadmium, or qualify for an exemption to these limits as defined in the Annexes of Directive 2000/53/EC (ELV). Regarding the REACH Regulation, the information TE provides

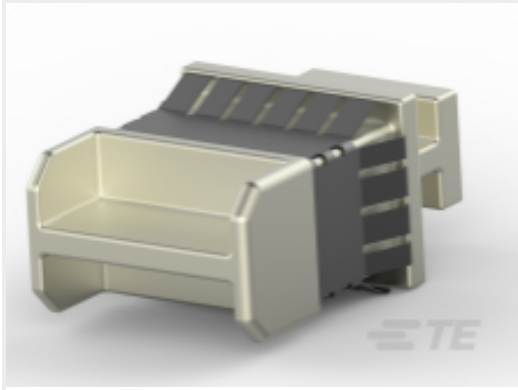


on SVHC in articles for this part number is based on the latest European Chemicals Agency (ECHA) ‘Guidance on requirements for substances in articles’ posted at this URL: <https://echa.europa.eu/guidance-documents/guidance-on-reach>

Compatible Parts



TE Part # 1367147-1
SFP COVER, UNPLATED



TE Part # 1888901-1
SFP+ EMI Plug



TE Part # 1761394-1
DUST COVER, SFP, GANGED & STACKED



TE Part # 1367147-3
SFP COVER, UNPL, NO LOGO

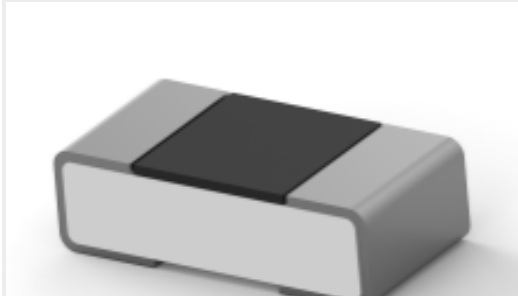


TE Part # CAT-SF59-C76264
SFP Connectors

Customers Also Bought



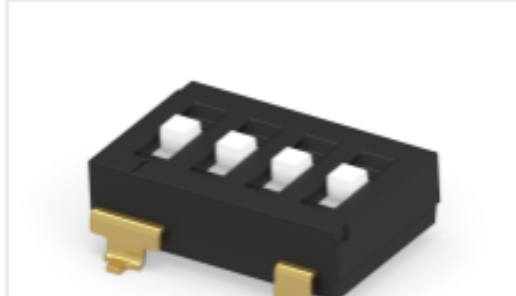
TE Part #1367073-1
20 POS SMT CONN, SFP, 15AU



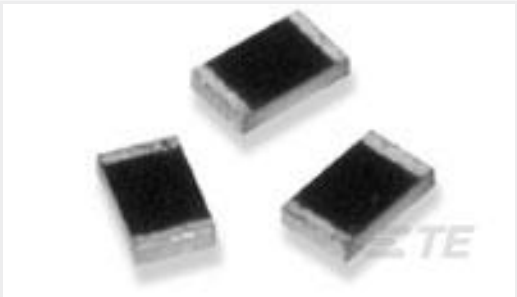
TE Part #2-2176364-3
RQ 0402 7K87 0.1% 10PPM 5K RL



TE Part #2345808-6
28RECEPT ASSY, RA, 28 POS, SLIVER 2.0



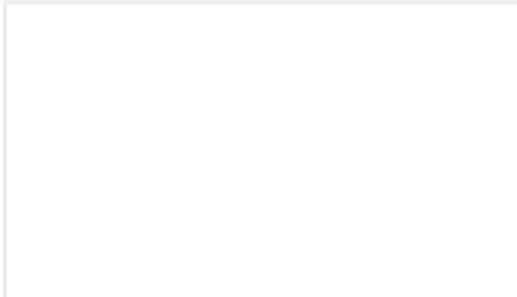
TE Part #2319747-1
TRI-STATE DIP 4P G RAISED TUBE



TE Part #1-1879747-1
RP 1J 80K6 0.1% 15PPM CUT LENGTH



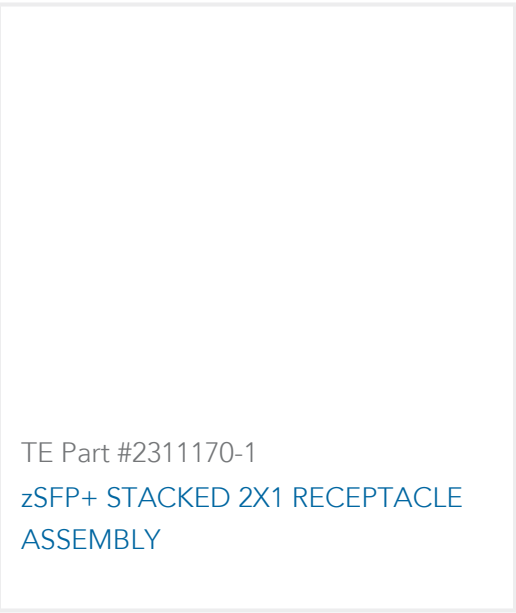
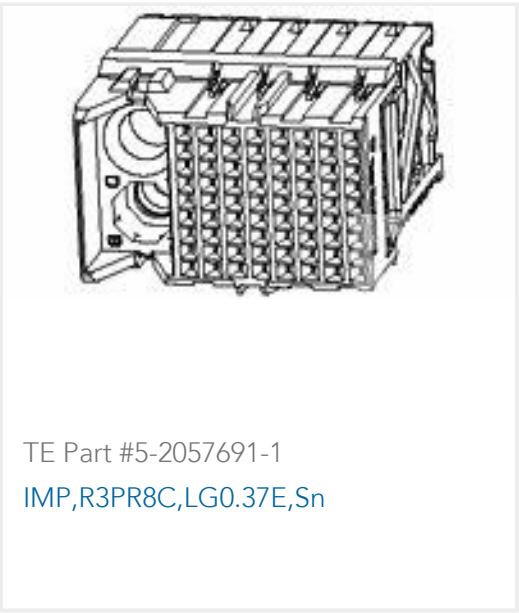
TE Part #2-1445091-5
MICRO MNL HDR ASSY S/ROW AU LF



TE Part #1-2170703-4
CAGE ASSEMBLY, QSFP28 1X1, SPRING,



TE Part #2325864-2
SFP-DD RECEPTACLE W HOLD DOWNS ASSEMBLY



Documents

CAD Files

Customer View Model

[ENG_CVM_CVM_2227303-3_C1.3d_stp.zip](#)

English

Customer View Model

[ENG_CVM_CVM_2227303-3_C1.2d_dxf.zip](#)

English

Customer View Model

[ENG_CVM_CVM_2227303-3_C1.3d_igs.zip](#)

English

3D PDF

3D

By downloading the CAD file I accept and agree to the [Terms and Conditions](#) of use.

Product Specifications

Application Specification

English