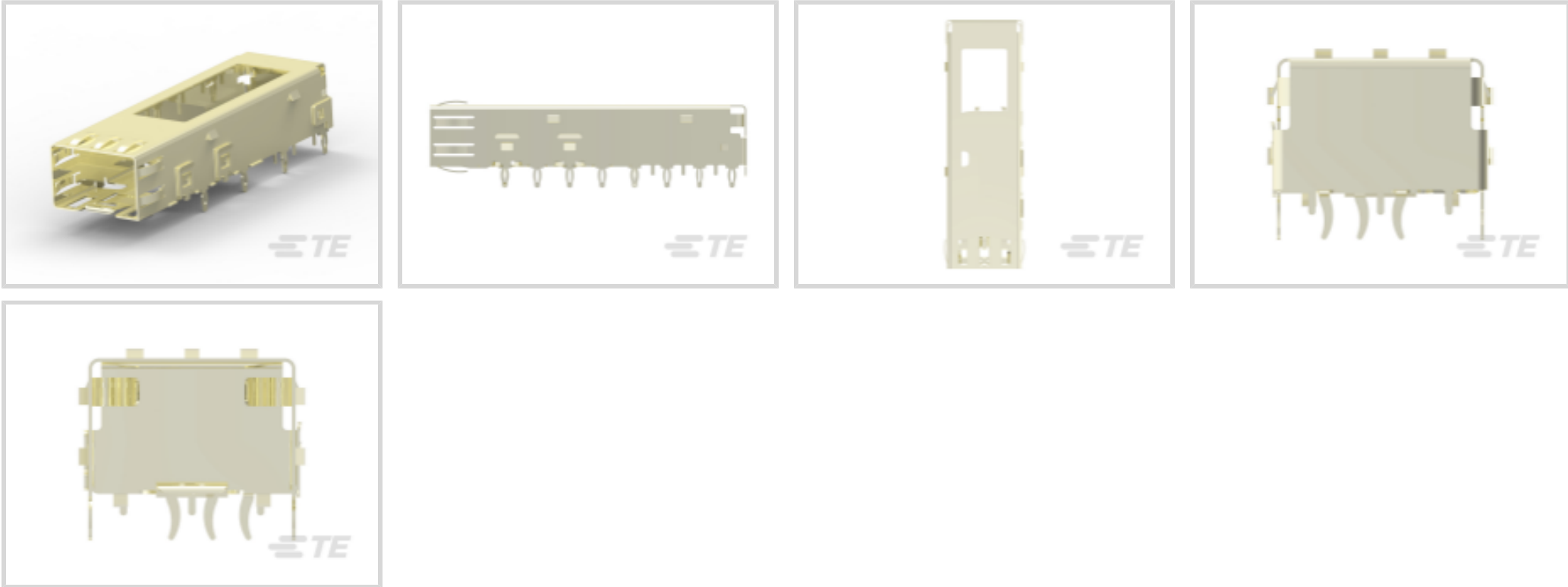




Connectors > Pluggable IO Connectors & Cages > SFP Connectors



Form Factor: **SFP**
Pluggable I/O Product Type: **Cage**
Sealable: **No**
Operating Temperature Range: **-55 – 85 °C [-67 – 185 °F]**
Data Rate (Max): **4 Gb/s**

[All SFP Connectors \(10\)](#)

Features

Product Type Features

Cage Type	Single
Form Factor	SFP
Pluggable I/O Product Type	Cage
Sealable	No

Configuration Features

Number of Ports	1
Port Matrix Configuration	1 x 1

Electrical Characteristics

Data Rate (Max)	4 Gb/s
-----------------	--------

Termination Features

Termination Method to PCB	Through Hole - Press-Fit
Termination Post & Tail Length	3 mm[.118 in]

Housing Features



Cage Material	Stainless Steel
---------------	-----------------

Dimensions

PCB Thickness (Recommended)	1.5 mm[.059 in]
-----------------------------	-----------------

Usage Conditions

Operating Temperature Range	-55 – 85 °C[-67 – 185 °F]
-----------------------------	---------------------------

Operation/Application

Pluggable I/O Applications	SFP
Heat Sink Compatible	Yes

Packaging Features

Packaging Method	Box
------------------	-----

Other

Included Lightpipe	No
EMI Containment Feature Type	Internal/External EMI Springs

Product Compliance

For compliance documentation, visit the product page on TE.com>

EU RoHS Directive 2011/65/EU	Compliant
EU ELV Directive 2000/53/EC	Compliant
China RoHS 2 Directive MIIT Order No 32, 2016	No Restricted Materials Above Threshold
EU REACH Regulation (EC) No. 1907/2006	Current ECHA Candidate List: JAN 2025 (247) Candidate List Declared Against: JAN 2025 (247) Does not contain REACH SVHC
Halogen Content	Low Halogen - Br, Cl, F, I < 900 ppm per homogenous material. Also BFR/CFR/PVC Free
Solder Process Capability	Not applicable for solder process capability

Product Compliance Disclaimer

This information is provided based on reasonable inquiry of our suppliers and represents our current actual knowledge based on the information they provided. This information is subject to change. The part numbers that TE has identified as EU RoHS compliant have a maximum concentration of 0.1% by weight in homogenous materials for lead, hexavalent chromium, mercury, PBB, PBDE, DBP, BBP, DEHP, DIBP, and 0.01% for cadmium, or qualify for an exemption to these limits as defined in the Annexes of Directive 2011/65/EU (RoHS2). Finished electrical and electronic equipment products will be CE marked as required by Directive 2011/65/EU. Components may not be CE marked. Additionally, the part numbers that TE has identified as EU ELV compliant have a maximum concentration of 0.1% by weight in homogenous materials for lead, hexavalent chromium, and mercury, and 0.01% for cadmium, or qualify for an exemption to these limits as defined in the Annexes of Directive 2000/53/EC (ELV). Regarding the REACH Regulation, the information TE provides



on SVHC in articles for this part number is based on the latest European Chemicals Agency (ECHA) ‘Guidance on requirements for substances in articles’ posted at this URL: <https://echa.europa.eu/guidance-documents/guidance-on-reach>

Compatible Parts



TE Part # CAT-SF59-C76264
SFP Connectors



TE Part # 2215077-3
ASSY, SEATING TOOL, SFP



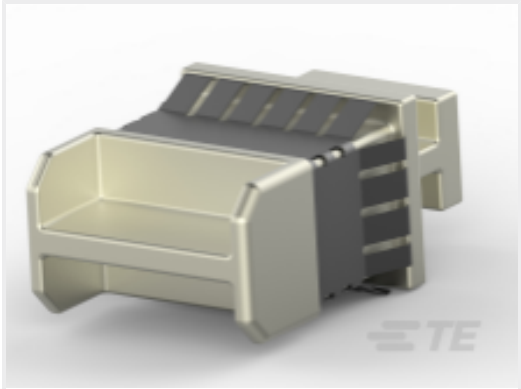
TE Part # 1761394-1
DUST COVER, SFP, GANGED & STACKED



TE Part # 1367147-3
SFP COVER, UNPL, NO LOGO

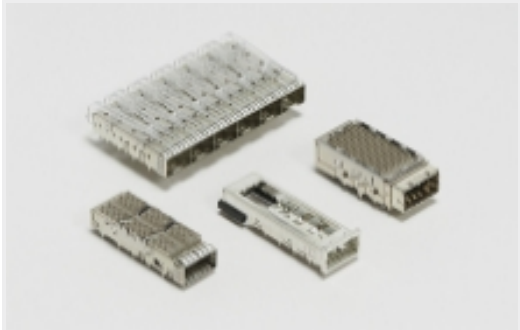


TE Part # 1367147-1
SFP COVER, UNPLATED

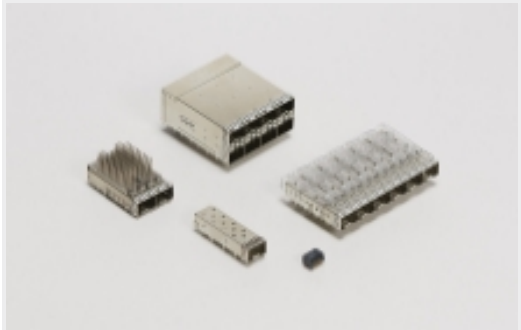


TE Part # 1888901-1
SFP+ EMI Plug

Also in the Series | DWDM



Pluggable IO Connectors & Cages(4)



SFP, SFP+ & zSFP+(4)

Customers Also Bought



TE Part #1367646-4
Heatsink clip Stamped and Form



TE Part #1963854-2
HEAT SINK SFP DWDM 10.0mm TALL



TE Part #2325864-2
SFP-DD RECEPTACLE W HOLD DOWNS ASSEMBLY



TE Part #6469048-1
HMZD 4PR RA HDR 80P ASSY LF



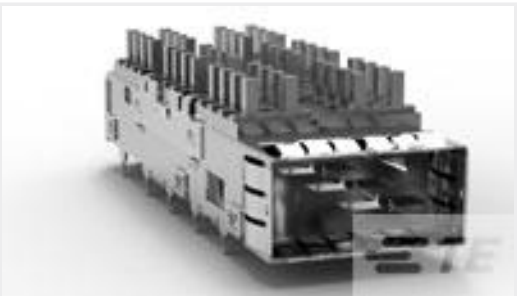
TE Part #6116353-8
INV MJ,1X2,PNL GRD,LED (YG/YG)



TE Part #1825096-4
TPA11CGRA004



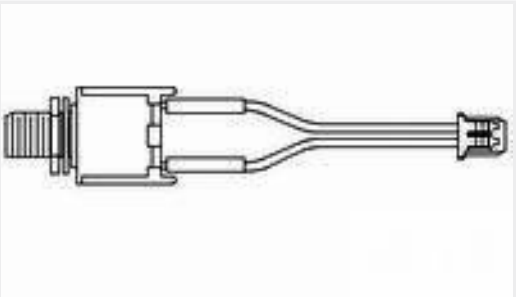
TE Part #1-5767096-0
MICT,REC,114,ASY,,025,TAPE,CAP



TE Part #1888631-2
Cage Assy SAN Hsink QSFP Thru Bezel



TE Part #2065657-1
zd Plus, 4 pair, receptacle assy



TE Part #1559528-1
30-W2297F04B, CABLE ASSEMBLY

Documents

Product Drawings

DWDM Cage Assembly, 11 PF

English

CAD Files

3D PDF

3D

Customer View Model

ENG_CVM_CVM_2227316-1_A.2d_dxf.zip

English

Customer View Model

ENG_CVM_CVM_2227316-1_A.3d_igs.zip

English

Customer View Model

ENG_CVM_CVM_2227316-1_A.3d_stp.zip

English

By downloading the CAD file I accept and agree to the [Terms and Conditions](#) of use.

Product Specifications

Product Specification

English