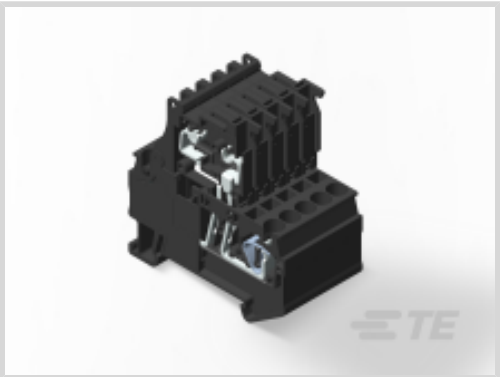




Connectors > Terminal Blocks & Strips > Modular Terminal Blocks



Modular Terminal Block Product Type: **Spring Terminal Block**

Number of Positions: **1**

Centerline (Pitch): **12.2 mm [ .48 in ]**

Termination Method to Wire & Cable: **Quick Connect**

Contact Current Rating (Max): **65 A**

Features

Product Type Features

Modular Terminal Block Product Type	Spring Terminal Block
-------------------------------------	-----------------------

Configuration Features

Number of Circuits	1
Number of Positions	1

Electrical Characteristics

Operating Voltage	600 VAC
-------------------	---------

Contact Features

Contact Base Material	Copper
Wire Contact Termination Area Plating Material	Matte Tin
Contact Current Rating (Max)	65 A

Termination Features

Termination Method to Wire & Cable	Quick Connect
------------------------------------	---------------

Mechanical Attachment

Connector Mounting Type	DIN Rail
-------------------------	----------

Housing Features

Centerline (Pitch)	12.2 mm[.48 in]
--------------------	-----------------

Dimensions

Wire Size	24 – 4 AWG
-----------	------------



Industry Standards

UL Flammability Rating	UL 94V-0
------------------------	----------

Product Compliance

For compliance documentation, visit the product page on TE.com>

EU RoHS Directive 2011/65/EU	Compliant
EU ELV Directive 2000/53/EC	Compliant
China RoHS 2 Directive MIIT Order No 32, 2016	No Restricted Materials Above Threshold
EU REACH Regulation (EC) No. 1907/2006	Current ECHA Candidate List: JAN 2025 (247) Candidate List Declared Against: JAN 2018 (181) Does not contain REACH SVHC
Halogen Content	Low Halogen - Br, Cl, F, I < 900 ppm per homogenous material. Also BFR/CFR/PVC Free
Solder Process Capability	Not reviewed for solder process capability

Product Compliance Disclaimer

This information is provided based on reasonable inquiry of our suppliers and represents our current actual knowledge based on the information they provided. This information is subject to change. The part numbers that TE has identified as EU RoHS compliant have a maximum concentration of 0.1% by weight in homogenous materials for lead, hexavalent chromium, mercury, PBB, PBDE, DBP, BBP, DEHP, DIBP, and 0.01% for cadmium, or qualify for an exemption to these limits as defined in the Annexes of Directive 2011/65/EU (RoHS2). Finished electrical and electronic equipment products will be CE marked as required by Directive 2011/65/EU. Components may not be CE marked. Additionally, the part numbers that TE has identified as EU ELV compliant have a maximum concentration of 0.1% by weight in homogenous materials for lead, hexavalent chromium, and mercury, and 0.01% for cadmium, or qualify for an exemption to these limits as defined in the Annexes of Directive 2000/53/EC (ELV). Regarding the REACH Regulation, the information TE provides on SVHC in articles for this part number is based on the latest European Chemicals Agency (ECHA) 'Guidance on requirements for substances in articles' posted at this URL: <https://echa.europa.eu/guidance-documents/guidance-on-reach>

Customers Also Bought



TE Part #1SNL606150R0000  
C4/6.P



TE Part #1SNL906603R0000  
BJC16-3



TE Part #1SNL906605R0000  
BJC16-5



TE Part #1SNL900100R0000  
EP5-6



TE Part #1SNL606010R0000  
[C4/6](#)

TE Part #1SNL906602R0000  
[BJCI6-2](#)

TE Part #1SNL610010R0000  
[C10/10](#)

TE Part #1SNA233000R0100  
[RC610](#)

TE Part #1SNA231000R0700  
[RC510](#)

TE Part #1SNK900001R0000  
[BAM4](#)

Documents

Product Drawings

[DTS 16-G](#)

English

[DTS 16-G](#)

English

CAD Files

[3D PDF](#)

3D

Customer View Model

[ENG\\_CVM\\_CVM\\_2271592-1\\_A.2d\\_dxf.zip](#)

English

Customer View Model

[ENG\\_CVM\\_CVM\\_2271592-1\\_A.3d\\_igs.zip](#)

English

Customer View Model

[ENG\\_CVM\\_CVM\\_2271592-1\\_A.3d\\_stp.zip](#)

English

By downloading the CAD file I accept and agree to the [Terms and Conditions](#) of use.

Product Specifications

[Application Specification](#)

English