



Connectors > Connector Accessories > Connector Caps & Covers



Connector Cover Type: **Receptacle Dust Cover**

Primary Product Material: **Aluminum Alloy**

Operating Temperature (Max): **85 °C**

Operating Temperature Range: **-55 – 85 °C [ -67 – 185 °F ]**

Features

Product Type Features

Sealable	No
Connector Cover Type	Receptacle Dust Cover

Body Features

Primary Product Material	Aluminum Alloy
--------------------------	----------------

Housing Features

Compatible With Connector Shape	Rectangular
---------------------------------	-------------

Dimensions

Product Width	22.8 mm
Product Length	93.85 mm

Usage Conditions

Operating Temperature (Max)	85 °C
Operating Temperature Range	-55 – 85 °C[-67 – 185 °F]

Packaging Features

Packaging Method	Box & Tray
------------------	------------

Product Compliance



For compliance documentation, visit the product page on TE.com>

EU RoHS Directive 2011/65/EU	Compliant
EU ELV Directive 2000/53/EC	Compliant
China RoHS 2 Directive MIIT Order No 32, 2016	No Restricted Materials Above Threshold
EU REACH Regulation (EC) No. 1907/2006	Current ECHA Candidate List: JAN 2025 (247) Candidate List Declared Against: JAN 2025 (247) Does not contain REACH SVHC
Halogen Content	Low Bromine/Chlorine - Br and Cl < 900 ppm per homogenous material. Also BFR /CFR/PVC Free
Solder Process Capability	Not reviewed for solder process capability

Product Compliance Disclaimer

This information is provided based on reasonable inquiry of our suppliers and represents our current actual knowledge based on the information they provided. This information is subject to change. The part numbers that TE has identified as EU RoHS compliant have a maximum concentration of 0.1% by weight in homogenous materials for lead, hexavalent chromium, mercury, PBB, PBDE, DBP, BBP, DEHP, DIBP, and 0.01% for cadmium, or qualify for an exemption to these limits as defined in the Annexes of Directive 2011/65/EU (RoHS2). Finished electrical and electronic equipment products will be CE marked as required by Directive 2011/65/EU. Components may not be CE marked. Additionally, the part numbers that TE has identified as EU ELV compliant have a maximum concentration of 0.1% by weight in homogenous materials for lead, hexavalent chromium, and mercury, and 0.01% for cadmium, or qualify for an exemption to these limits as defined in the Annexes of Directive 2000/53/EC (ELV). Regarding the REACH Regulation, the information TE provides on SVHC in articles for this part number is based on the latest European Chemicals Agency (ECHA) 'Guidance on requirements for substances in articles' posted at this URL: <https://echa.europa.eu/guidance-documents/guidance-on-reach>

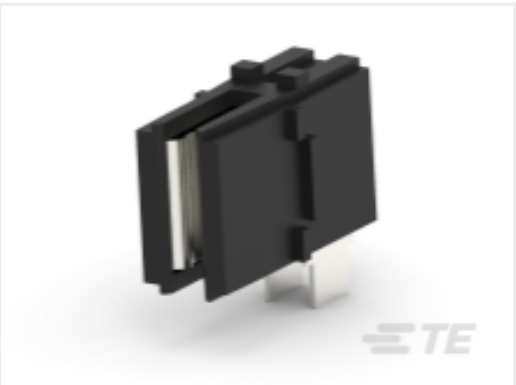
Compatible Parts



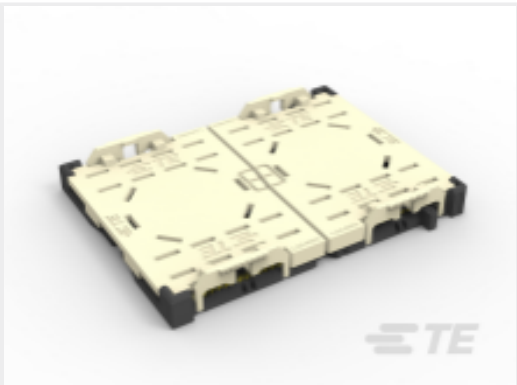
Customers Also Bought



TE Part #2057430-3  
IMP100S,H,V2P10C,UG,OEWS39,5.5



TE Part #2178531-2  
CROWN CLIP JUNIOR CONNECTOR



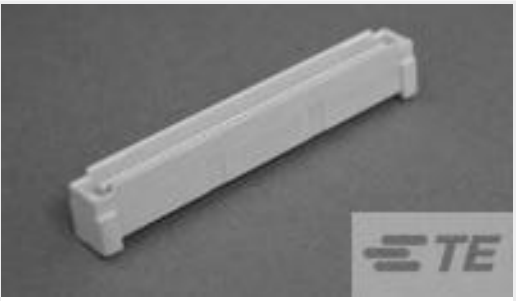
TE Part #1-2324271-3  
RIGHT SEGMENT LGA4189-4  
SOCKETP4 FOR ODM



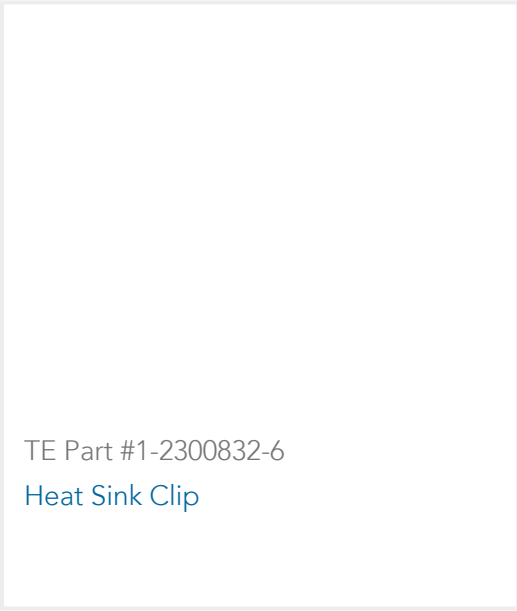
TE Part #6450881-4  
MBXLE R/A RCPT 16S+2P



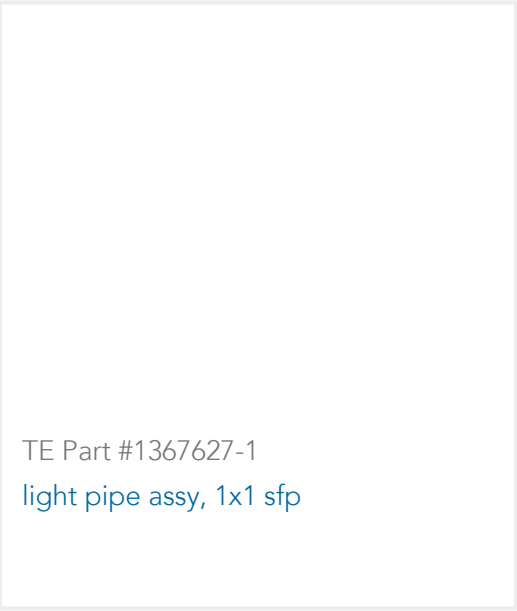
TE Part #5-6450860-0  
MBXLE VERT RCPT  
3HDP+1LP+24S+1LP+3HDP



TE Part #6123001-3  
0.8FH,P08H.5,080,30/Sn,TR,SC



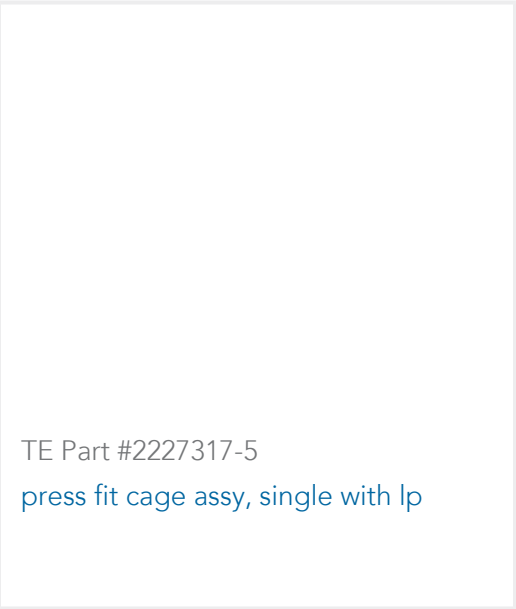
TE Part #1-2300832-6  
Heat Sink Clip



TE Part #1367627-1  
light pipe assy, 1x1 sfp



TE Part #2316821-8  
SFP+assy2x1 Spring Fingers No Lp Sn



TE Part #2227317-5  
press fit cage assy, single with lp

Documents

Product Drawings

CFP2 RECEPT ASSEMBLY, 1X2

English

CAD Files

3D PDF

3D

Customer View Model

ENG\_CVM\_CVM\_2304454-1\_B.2d\_dxf.zip

English

Customer View Model

ENG\_CVM\_CVM\_2304454-1\_B.3d\_igs.zip

English

Customer View Model

ENG\_CVM\_CVM\_2304454-1\_B.3d\_stp.zip

English

By downloading the CAD file I accept and agree to the Terms and Conditions of use.

Product Specifications



Application Specification

English