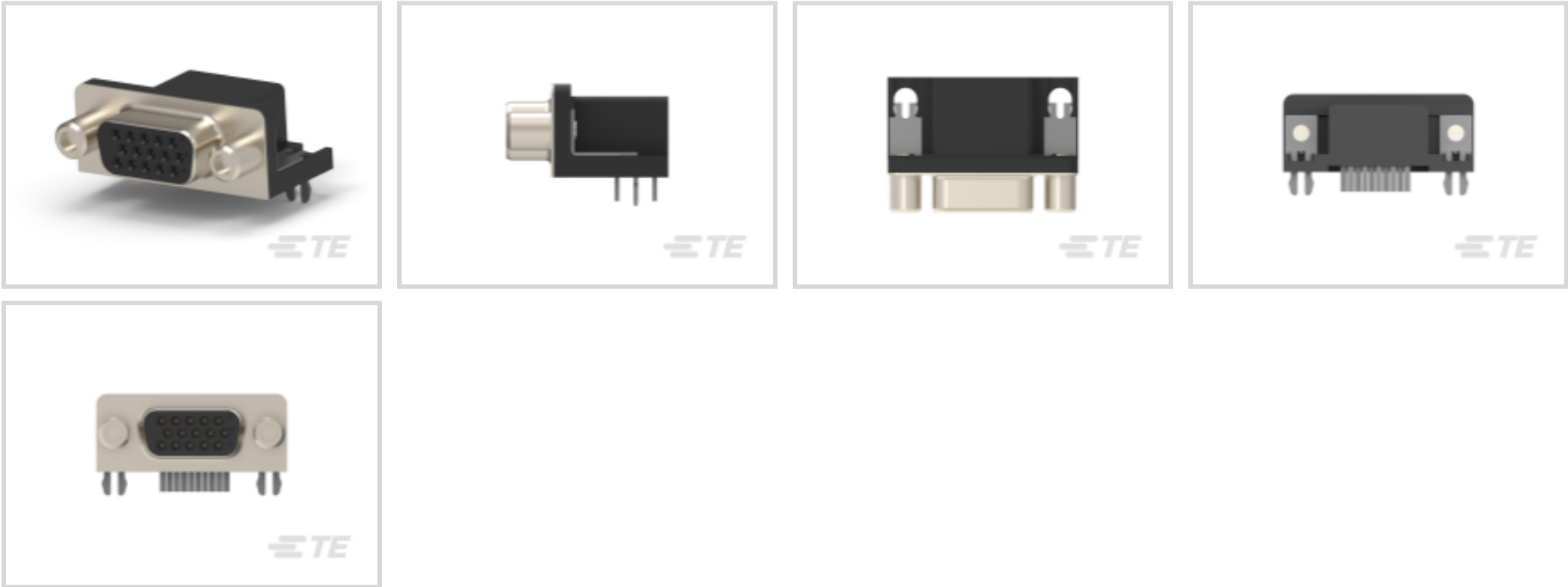




Connectors > D-Shaped Connectors > D-Sub Receptacle Assembly: Right Angle, 2.29mm



Number of Positions: 15

Connector & Housing Type: Receptacle

Connector System: Wire-to-Board

Connector Mounting Type: Board Mount

Connector Shell Size: 1

[All D-Sub Receptacle Assembly: Right Angle, 2.29mm \(7\)](#)

Features

Product Type Features

Connector & Housing Type	Receptacle
Connector System	Wire-to-Board
Connector Shell Size	1
Connector & Contact Terminates To	Printed Circuit Board

Configuration Features

PCB Mount Orientation	Right Angle
Number of Rows	3
Number of Positions	15

Body Features

Primary Product Color	Black
Connector Profile	Standard

Contact Features

--	--



Contact Shape & Form	Round
Contact Current Rating (Max)	3 A
Contact Options	Installed

Termination Features

Termination Method to PCB	Through Hole - Solder
---------------------------	-----------------------

Mechanical Attachment

Mating Retention	With
PCB Mount Retention Type	Boardlock
Mating Retention Type	Threaded Inserts, 4-40 UNC
PCB Mount Retention	With
Connector Mounting Type	Board Mount

Housing Features

Housing Material	PBT GF
Centerline (Pitch)	2.29 mm[.09 in]

Dimensions

Row-to-Row Spacing	1.98 mm[.077 in]
--------------------	------------------

Usage Conditions

Operating Temperature Range	-55 – 85 °C[-67 – 185 °F]
-----------------------------	---------------------------

Operation/Application

Circuit Application	Signal
---------------------	--------

Packaging Features

Packaging Method	Box & Tray
------------------	------------

Product Compliance

For compliance documentation, visit the product page on [TE.com](#)>

EU RoHS Directive 2011/65/EU	Compliant with Exemptions
EU ELV Directive 2000/53/EC	Out of Scope
China RoHS 2 Directive MIIT Order No 32, 2016	Restricted Materials Above Threshold
EU REACH Regulation (EC) No. 1907/2006	Current ECHA Candidate List: JAN 2025 (247) Candidate List Declared Against: JAN 2025 (247) SVHC > Threshold: Pb (2% in 10612841569)



Article Safe Usage Statements:
Do not eat, drink or smoke when using this product. Wash thoroughly after handling. Recycle if possible and dispose of the article by following all applicable governmental regulations relevant to your geographic location.

Halogen Content	Not Low Halogen - contains Br or Cl > 900 ppm.
Solder Process Capability	Reflow solder capable to 260°C

Product Compliance Disclaimer

This information is provided based on reasonable inquiry of our suppliers and represents our current actual knowledge based on the information they provided. This information is subject to change. The part numbers that TE has identified as EU RoHS compliant have a maximum concentration of 0.1% by weight in homogenous materials for lead, hexavalent chromium, mercury, PBB, PBDE, DBP, BBP, DEHP, DIBP, and 0.01% for cadmium, or qualify for an exemption to these limits as defined in the Annexes of Directive 2011/65/EU (RoHS2). Finished electrical and electronic equipment products will be CE marked as required by Directive 2011/65/EU. Components may not be CE marked. Additionally, the part numbers that TE has identified as EU ELV compliant have a maximum concentration of 0.1% by weight in homogenous materials for lead, hexavalent chromium, and mercury, and 0.01% for cadmium, or qualify for an exemption to these limits as defined in the Annexes of Directive 2000/53/EC (ELV). Regarding the REACH Regulation, the information TE provides on SVHC in articles for this part number is based on the latest European Chemicals Agency (ECHA) 'Guidance on requirements for substances in articles' posted at this URL: <https://echa.europa.eu/guidance-documents/guidance-on-reach>

Compatible Parts



TE Part # 2311763-3
AMPL REC, HD22, R/A, 15P, THREADED

Customers Also Bought



TE Part #5499923-9
A/L UNIV HDR 40P VERT LAT



TE Part #6-2176364-9
RQ 0402 23K7 0.1% 10PPM 5K RL



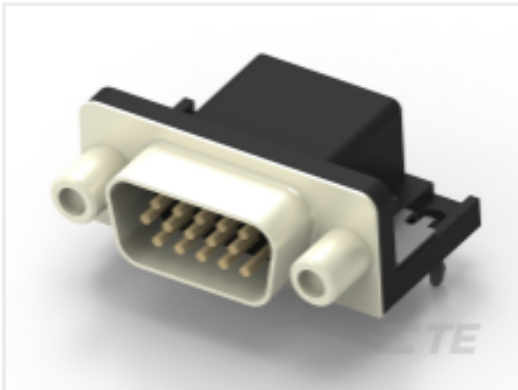
TE Part #2176528-5
3503G 2B 6K49 1% 5K RL



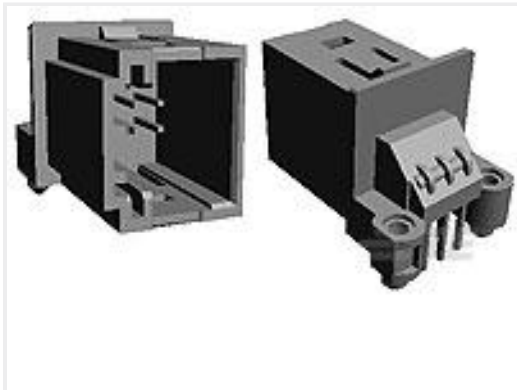
TE Part #2176364-9
RQ 0402 5K62 0.1% 10PPM 5K RL



TE Part #5536053-5
ASSY,PIN,EUROCARD,TYPE B/2,LEA



TE Part #2311775-1
AMPL PLUG, HD22, R/A, 15P, S/L



TE Part #953440-3
6pos MQS .63 header 90deg



TE Part #2273111-1
M8 strgt socket to M12 strgt plug AA



TE Part #770166-2
02P MINI-UMNL ASSY VO SNAU



TE Part #770178-2
06P MINI-UMNL ASSY VO SNAU

Documents

Product Drawings

AMPL REC, HD22, R/A, 15P, THREADED

English

CAD Files

Customer View Model

ENG_CVM_CVM_2311763-2_B1.3d_stp.zip

English

Customer View Model

ENG_CVM_CVM_2311763-2_B1.2d_dxf.zip

English

Customer View Model

ENG_CVM_CVM_2311763-2_B1.3d_igs.zip

English

3D PDF

3D

By downloading the CAD file I accept and agree to the [Terms and Conditions](#) of use.

Product Specifications

Product Specification

English