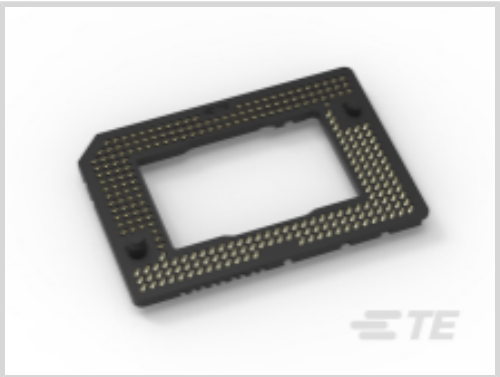




Connectors > Socket Connectors > IC Sockets > LGA Sockets



IC Socket Type: **LGA 257**

Number of Positions: **257**

Contact Mating Area Plating Material Thickness: **[30 µin]**

Centerline (Pitch): **1 mm [.039 in]**

Termination Method to PCB: **Surface Mount**

Features

Product Type Features

Connector & Contact Terminates To	Printed Circuit Board
Connector System	Board-to-Board

Configuration Features

Number of Positions	257
Grid Spacing	1 x 1 mm [.039 x .039 in]

Body Features

Frame Style	C Shape
-------------	---------

Contact Features

Contact Mating Area Plating Material	Gold (Au)
Contact Base Material	Copper Alloy
IC Socket Type	LGA 257
	30 µin
Contact Current Rating (Max)	1 A

Termination Features

Termination Method to PCB	Surface Mount
---------------------------	---------------

Mechanical Attachment

Connector Mounting Type	Panel Mount
-------------------------	-------------

Housing Features



Housing Material	High Temperature Thermoplastic
Housing Color	Black
Centerline (Pitch)	1 mm[.039 in]

Usage Conditions

Operating Temperature Range	-25 – 100 °C[-13 – 212 °F]
-----------------------------	----------------------------

Operation/Application

Circuit Application	Signal
---------------------	--------

Industry Standards

UL Flammability Rating	UL 94V-0
------------------------	----------

Packaging Features

Tray Color	White
Packaging Method	Tray

Product Compliance

For compliance documentation, visit the product page on TE.com>

EU RoHS Directive 2011/65/EU	Compliant
EU ELV Directive 2000/53/EC	Compliant
China RoHS 2 Directive MIIT Order No 32, 2016	No Restricted Materials Above Threshold
EU REACH Regulation (EC) No. 1907/2006	Current ECHA Candidate List: JAN 2025 (247) Candidate List Declared Against: JUN 2018 (191) Does not contain REACH SVHC
Halogen Content	Low Halogen - Br, Cl, F, I < 900 ppm per homogenous material. Also BFR/CFR/PVC Free
Solder Process Capability	Not reviewed for solder process capability

Product Compliance Disclaimer

This information is provided based on reasonable inquiry of our suppliers and represents our current actual knowledge based on the information they provided. This information is subject to change. The part numbers that TE has identified as EU RoHS compliant have a maximum concentration of 0.1% by weight in homogenous materials for lead, hexavalent chromium, mercury, PBB, PBDE, DBP, BBP, DEHP, DIBP, and 0.01% for cadmium, or qualify for an exemption to these limits as defined in the Annexes of Directive 2011/65/EU (RoHS2). Finished electrical and electronic equipment products will be CE marked as required by Directive 2011/65/EU. Components may not be CE marked. Additionally, the part numbers that TE has identified as EU ELV compliant have a maximum concentration of 0.1% by weight in homogenous materials for lead, hexavalent chromium, and mercury, and 0.01% for cadmium, or qualify for an exemption to these limits as defined in the Annexes of Directive 2000/53/EC (ELV). Regarding the REACH Regulation, the information TE provides on SVHC in articles for this part number is based on the latest European Chemicals Agency (ECHA) 'Guidance on requirements for substances in articles' posted at this URL: <https://echa.europa.eu/guidance-documents/guidance-on-reach>



Compatible Parts

TE Part # 2350616-1
DUAL LGA,250 POS, DMD SOCKET

TE Part # 2041549-1
SOCKET ASSY, DMD 350, T/R, G/F

Customers Also Bought

TE Part #1888971-4
QSFP TB CAGE ASSY, W/LP, NO HS

TE Part #2085945-1
QSFP+ Assy, 2x1, Gskt, 2LP-Outr, Sn EONs

TE Part #1-5177986-3
0.8FH,P06H.5,080,08/Sn,TR,SC

TE Part #5084616-3
0.8FH,R13H.5,080,08/Sn,TR,SC

TE Part #6-2170705-2
CAGE ASSY, QSFP28 1X1, SPRING, HS, LP

TE Part #2377200-1
DMD 149 SOCKET ASSY, S450, REEL

TE Part #6-1761612-5
STEP-Z PLUG 15MM 104P LF ST

TE Part #5555140-4
MJ,LPF,R/A,6P/6C,SHLD,PNL GRD

TE Part #5-1761613-5
STEP-Z RCPT 05MM 104P LF ST

TE Part #1-1462038-1
IM01NS=IM RELAY 140mW 3V

Documents

Product Drawings
DUAL LGA,257 POS, DMD SOCKET
English

CAD Files
3D PDF



3D

Customer View Model

[ENG_CVM_CVM_2319757-1_A.2d_dxf.zip](#)

English

Customer View Model

[ENG_CVM_CVM_2319757-1_A.3d_igs.zip](#)

English

Customer View Model

[ENG_CVM_CVM_2319757-1_A.3d_stp.zip](#)

English

By downloading the CAD file I accept and agree to the [Terms and Conditions](#) of use.

Product Specifications

[Application Specification](#)

English