

Product Compliance

For compliance documentation, visit the product page on TE.com>

EU RoHS Directive 2011/65/EU	Compliant
EU ELV Directive 2000/53/EC	Compliant
China RoHS 2 Directive MIIT Order No 32, 2016	No Restricted Materials Above Threshold
EU REACH Regulation (EC) No. 1907/2006	Current ECHA Candidate List: JAN 2025 (247) Candidate List Declared Against: JAN 2022 (223) Does not contain REACH SVHC
Halogen Content	Not Low Halogen - contains Br or Cl > 900 ppm.
Solder Process Capability	Not reviewed for solder process capability

Product Compliance Disclaimer

This information is provided based on reasonable inquiry of our suppliers and represents our current actual knowledge based on the information they provided. This information is subject to change. The part numbers that TE has identified as EU RoHS compliant have a maximum concentration of 0.1% by weight in homogenous materials for lead, hexavalent chromium, mercury, PBB, PBDE, DBP, BBP, DEHP, DIBP, and 0.01% for cadmium, or qualify for an exemption to these limits as defined in the Annexes of Directive 2011/65/EU (RoHS2). Finished electrical and electronic equipment products will be CE marked as required by Directive 2011/65/EU. Components may not be CE marked. Additionally, the part numbers that TE has identified as EU ELV compliant have a maximum concentration of 0.1% by weight in homogenous materials for lead, hexavalent chromium, and mercury, and 0.01% for cadmium, or qualify for an exemption to these limits as defined in the Annexes of Directive 2000/53/EC (ELV). Regarding the REACH Regulation, the information TE provides on SVHC in articles for this part number is based on the latest European Chemicals Agency (ECHA) 'Guidance on requirements for substances in articles' posted at this URL: <https://echa.europa.eu/guidance-documents/guidance-on-reach>

Compatible Parts



TE Part # 206430-1  
RECPT, SZ 11-4, CPC

Customers Also Bought



TE Part #1-206062-4  
CABLE CLAMP KIT #11



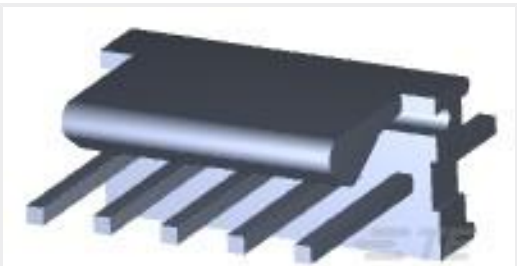
TE Part #206429-1  
CPC PLUG ASSY, 11-4, REV SEX



TE Part #206430-1  
RECPT, SZ 11-4, CPC



TE Part #6-103958-0  
2X11 MTE RCPT SR LATCH .100CL



TE Part #641215-5  
05P MTA100 HDR ASSY FL/ST 30AU



TE Part #1-66099-5  
III+ PIN,18-16,TIN ,LP



TE Part #66103-3  
III+ PIN,24-20,15AU/FL,LP



TE Part #2386899-1  
HNG RCPT CONN CA,STD,SER 1,SZ 11-4,0.5 M



TE Part #2386908-1  
SQ.FL RCPT CONN CA, REV,SER1, SZ11-4,0.5M



TE Part #2386907-1  
PLUG CONN CA,STD,SER 1,SZ11-4, LGTH 0.5 M

Documents

Product Drawings  
LUG CONN CA,REV,SER 1,SZ 11-4,LGTH 0.5 M  
English

CAD Files  
3D PDF  
3D  
Customer View Model  
ENG\_CVM\_CVM\_2386906-1\_B.2d\_dxf.zip



English

Customer View Model

[ENG\\_CVM\\_CVM\\_2386906-1\\_B.3d\\_igs.zip](#)

English

Customer View Model

[ENG\\_CVM\\_CVM\\_2386906-1\\_B.3d\\_stp.zip](#)

English

By downloading the CAD file I accept and agree to the [Terms and Conditions](#) of use.

Datasheets & Catalog Pages

[Circular Plastic Connectors Standard Cable Assemblies](#)

English

Agency Approvals

[UL Report](#)

English