



Cable Assemblies > Copper Cable Assemblies > Internal I/O Cable Assemblies



Cable Assembly Type: **CPC Pigtail**

Cable Assembly Length: **1 m**

Wire Size: **24 AWG**

Cable Assembly (End A): **CPC Receptacle**

Cable Assembly Category: **Industry Standard**

Features

Product Type Features

| | |
|-------------------------|-------------------|
| Cable Assembly Type | CPC Pigtail |
| Cable Assembly (End A) | CPC Receptacle |
| Cable Assembly Category | Industry Standard |

Configuration Features

| | |
|----------------------------|---|
| Number of Power Positions | 8 |
| Number of Signal Positions | 8 |

Dimensions

| | |
|-----------|--------|
| Wire Size | 24 AWG |
|-----------|--------|

Other

| | |
|------------------------------|--------------|
| Cable Assembly Configuration | Single Ended |
| Cable Assembly Length | 1 m |

Product Compliance

For compliance documentation, visit the product page on TE.com>

| | |
|------------------------------|-----------|
| EU RoHS Directive 2011/65/EU | Compliant |
|------------------------------|-----------|



| | |
|---|---|
| EU ELV Directive 2000/53/EC | Compliant |
| China RoHS 2 Directive MIIT Order No 32, 2016 | No Restricted Materials Above Threshold |
| EU REACH Regulation (EC) No. 1907/2006 | Current ECHA Candidate List: JAN 2025 (247) Candidate List Declared Against: JAN 2025 (247) Does not contain REACH SVHC |
| Halogen Content | Not Low Halogen - contains Br or Cl > 900 ppm. |
| Solder Process Capability | Not reviewed for solder process capability |

Product Compliance Disclaimer

This information is provided based on reasonable inquiry of our suppliers and represents our current actual knowledge based on the information they provided. This information is subject to change. The part numbers that TE has identified as EU RoHS compliant have a maximum concentration of 0.1% by weight in homogenous materials for lead, hexavalent chromium, mercury, PBB, PBDE, DBP, BBP, DEHP, DIBP, and 0.01% for cadmium, or qualify for an exemption to these limits as defined in the Annexes of Directive 2011/65/EU (RoHS2). Finished electrical and electronic equipment products will be CE marked as required by Directive 2011/65/EU. Components may not be CE marked. Additionally, the part numbers that TE has identified as EU ELV compliant have a maximum concentration of 0.1% by weight in homogenous materials for lead, hexavalent chromium, and mercury, and 0.01% for cadmium, or qualify for an exemption to these limits as defined in the Annexes of Directive 2000/53/EC (ELV). Regarding the REACH Regulation, the information TE provides on SVHC in articles for this part number is based on the latest European Chemicals Agency (ECHA) 'Guidance on requirements for substances in articles' posted at this URL: <https://echa.europa.eu/guidance-documents/guidance-on-reach>

Compatible Parts

TE Part # 206434-1
CPC PLUG ASSEMBLY SIZE 11-8

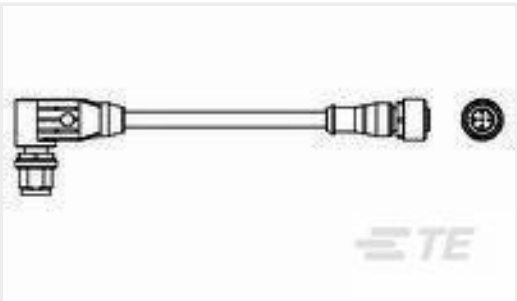
Customers Also Bought

TE Part #2-6437158-6
FSN-12A

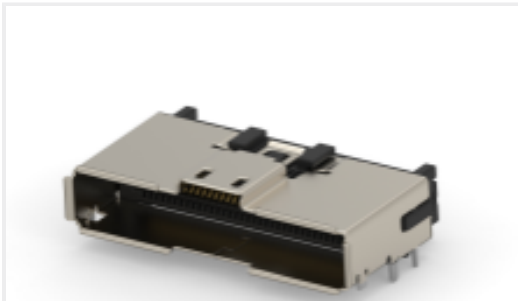
TE Part #1-1775469-4
HPI CONN., 2.0MM, R/A, SMT, 14P, 80U

TE Part #1-6437158-3
FSN-11.5A

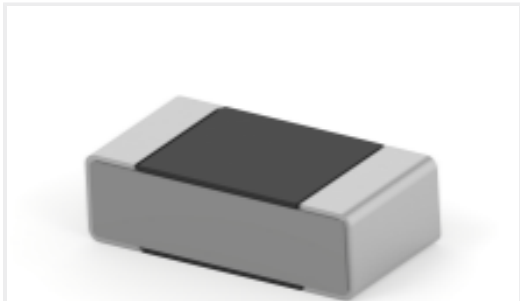
TE Part #2821385-1
SLIVER C/A, 74P, R/A TO R/A, 10GHZ, 85OHM



TE Part #1-2273121-5
M12 angled plug to M12 strgt socket
AA



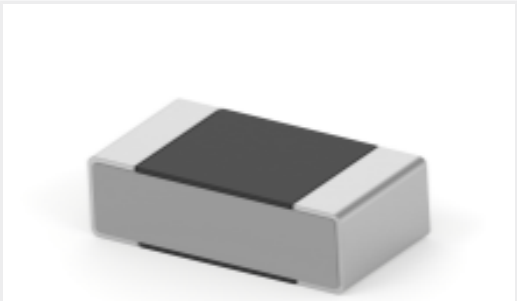
TE Part #2292069-1
RCPT ASSEMBLY SMT RA 74 POSN
MBC



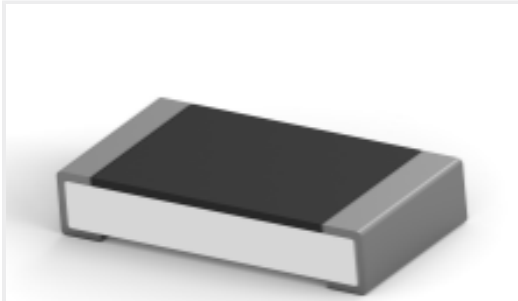
TE Part #4-1879132-0
RN 0402 23K2 0.1% 10PPM 1K RL



TE Part #1-440129-4
2.0MM,HSG,14POS



TE Part #7-2176269-0
RU 0603 15K 0.01% 2PPM 1K RL



TE Part #4-2176388-0
RQ 1206 25R5 0.1% 10PPM 5K RL

Documents

Product Drawings

FL RPT CONN CA,REV,SER 2, SZ 11-8,L 1M

English

CAD Files

Customer View Model

ENG_CVM_CVM_2387132-2_B.3d_igs.zip

English

Customer View Model

ENG_CVM_CVM_2387132-2_B.3d_stp.zip

English

Customer View Model

ENG_CVM_CVM_2387132-2_B.2d_dxf.zip

English

3D PDF

3D

By downloading the CAD file I accept and agree to the [Terms and Conditions](#) of use.

Datasheets & Catalog Pages

Circular Plastic Connectors Standard Cable Assemblies

English

Agency Approvals

UL Report

English