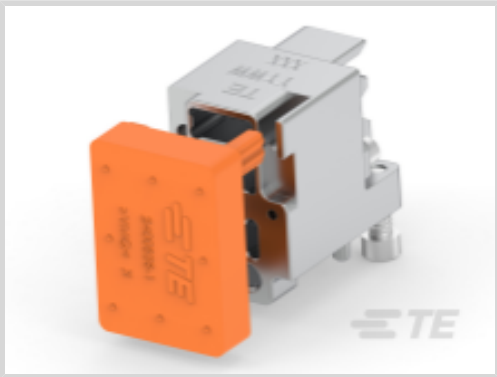




Fiber Optics > Fiber Optic Connectors > Backplane Fiber Optics



Fiber Optic Connector Type: **VITA 66.5**

Fiber Optic Product Type: **Module (Daughtercard) Kit**

Features

Product Type Features

Fiber Optic Mode	Multimode
Fiber Optic Connector Type	VITA 66.5
Fiber Optic Product Type	Module (Daughtercard) Kit

Configuration Features

Number of Fibers per MT Ferrule	12, 24
Number of MT Ferrule Cavities	3

Body Features

Primary Product Material	Aluminum
--------------------------	----------

Dimensions

Compatible Fiber Diameter	50/125 μ m
---------------------------	----------------

Usage Conditions

Operating Temperature Range	-40 – 85 °C
-----------------------------	-------------

Product Compliance

[For compliance documentation, visit the product page on TE.com>](#)

EU RoHS Directive 2011/65/EU	Compliant
EU ELV Directive 2000/53/EC	Compliant
China RoHS 2 Directive MIIT Order No 32, 2016	No Restricted Materials Above Threshold
EU REACH Regulation (EC) No. 1907/2006	Current ECHA Candidate List: JAN 2025 (247) Candidate List Declared Against: JAN 2025 (247) SVHC > Threshold:



Dodecamethylcyclohexasiloxane (D6) (.5% in 26179700355)
Decamethylcyclopentasiloxane (D5) (.5% in 26179700355)
Octamethylcyclotetrasiloxane (D4) (.5% in 26179700355)

Article Safe Usage Statements:
Wash thoroughly after handling. Recycle if possible and dispose of the article by following all applicable governmental regulations relevant to your geographic location.

Halogen Content	Low Halogen - Br, Cl, F, I < 900 ppm per homogenous material. Also BFR/CFR/PVC Free
Solder Process Capability	Not reviewed for solder process capability

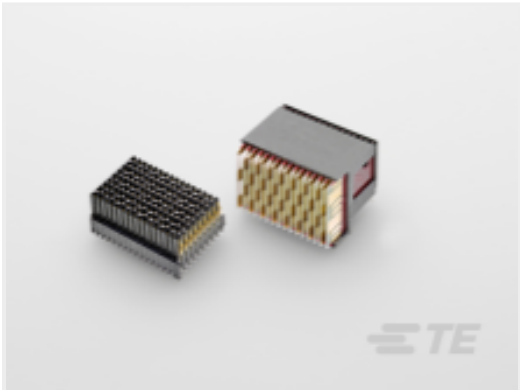
Product Compliance Disclaimer

This information is provided based on reasonable inquiry of our suppliers and represents our current actual knowledge based on the information they provided. This information is subject to change. The part numbers that TE has identified as EU RoHS compliant have a maximum concentration of 0.1% by weight in homogenous materials for lead, hexavalent chromium, mercury, PBB, PBDE, DBP, BBP, DEHP, DIBP, and 0.01% for cadmium, or qualify for an exemption to these limits as defined in the Annexes of Directive 2011/65/EU (RoHS2). Finished electrical and electronic equipment products will be CE marked as required by Directive 2011/65/EU. Components may not be CE marked. Additionally, the part numbers that TE has identified as EU ELV compliant have a maximum concentration of 0.1% by weight in homogenous materials for lead, hexavalent chromium, and mercury, and 0.01% for cadmium, or qualify for an exemption to these limits as defined in the Annexes of Directive 2000/53/EC (ELV). Regarding the REACH Regulations, TE’s information on SVHC in articles for this part number is still based on the European Chemical Agency (ECHA) ‘Guidance on requirements for substances in articles’(Version: 2, April 2011), applying the 0.1% weight on weight concentration threshold at the finished product level. TE is aware of the European Court of Justice ruling of September 10th, 2015 also known as O5A (Once An Article Always An Article) stating that, in case of ‘complex object’, the threshold for a SVHC must be applied to both the product as a whole and simultaneously to each of the articles forming part of its composition. TE has evaluated this ruling based on the new ECHA “Guidance on requirements for substances in articles” (June 2017, version 4.0) and will be updating its statements accordingly.

Compatible Parts



Customers Also Bought



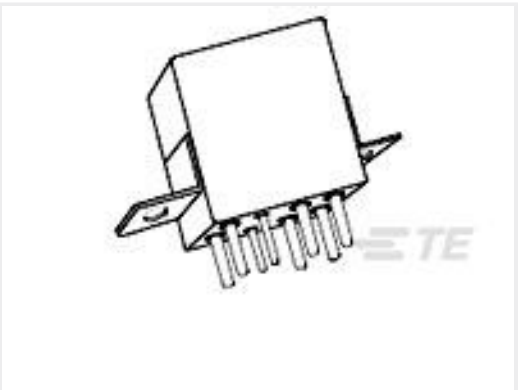
TE Part #2302786-1
RAPLUGASSY,7ROWLEFTEND,HALF, VPX,MGRT3



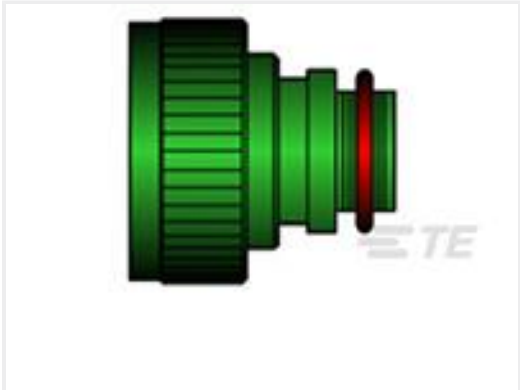
TE Part #2000713-1
RA Keyed Guide Mod, Vita 46, Machined



TE Part #2102772-1
DC, 7Row, Half Left End, MULTIGIG RT 2R



TE Part #1-1617749-7
FCA-210-1022L=M83536/10-022L



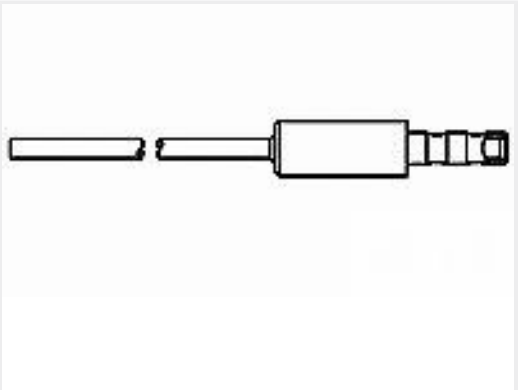
TE Part #459741-000
TXR40AB00-1412AI



TE Part #2000713-6
RA Keyed Guide Mod, Vita 46, Machined



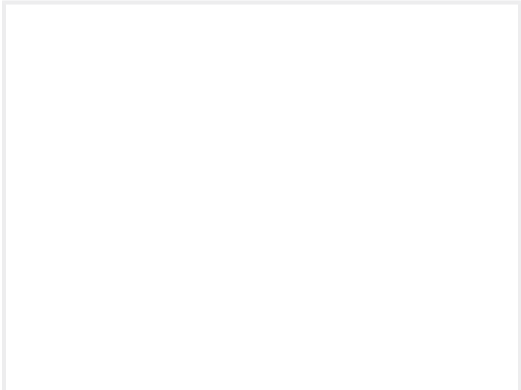
TE Part #2102736-1
BP, Center, MULTIGIG RT 2R



TE Part #1218147-1
LGH,MICRO-MIN,PLUG,ASSY,170SER



TE Part #2000713-2
RA Keyed Guide Mod. Vita 46, Machined



TE Part #2319465-1
LOCATOR TOOL, HDRF PIN

Documents

Product Drawings

Conn Kit, Plug, Cabled, 3MT, V66.5-D

English

CAD Files

Customer View Model

ENG_CVM_CVM_2388442-1_A.3d_igs.zip

English

3D PDF

3D

Customer View Model

ENG_CVM_CVM_2388442-1_A.3d_stp.zip

English

Customer View Model

ENG_CVM_CVM_2388442-1_A.2d_dxf.zip

English

By downloading the CAD file I accept and agree to the [Terms and Conditions](#) of use.

Product Specifications



Product Specification

English