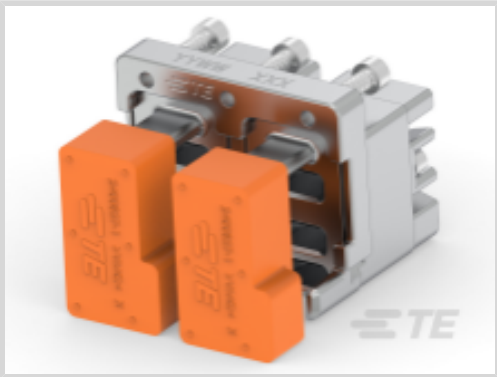




Fiber Optics > Fiber Optic Connectors > Backplane Fiber Optics



Fiber Optic Connector Type: **VITA 66.5**

Fiber Optic Product Type: **Motherboard Kit**

Features

Product Type Features

Fiber Optic Mode	Multimode
Fiber Optic Connector Type	VITA 66.5
Fiber Optic Product Type	Motherboard Kit

Configuration Features

Number of Fibers per MT Ferrule	12, 24
Number of MT Ferrule Cavities	6

Body Features

Primary Product Material	Aluminum
--------------------------	----------

Usage Conditions

Operating Temperature Range	-40 – 85 °C
-----------------------------	-------------

Product Compliance

[For compliance documentation, visit the product page on TE.com>](#)

EU RoHS Directive 2011/65/EU	Compliant
EU ELV Directive 2000/53/EC	Compliant
China RoHS 2 Directive MIIT Order No 32, 2016	No Restricted Materials Above Threshold
EU REACH Regulation (EC) No. 1907/2006	Current ECHA Candidate List: JAN 2025 (247) Candidate List Declared Against: JAN 2025 (247) SVHC > Threshold: Dodecamethylcyclohexasiloxane (D6) (.5% in 26179742992)



Decamethylcyclopentasiloxane (D5) (.5% in 26179742992)
Octamethylcyclotetrasiloxane (D4) (.5% in 26179742992)

Article Safe Usage Statements:
Wash thoroughly after handling. Recycle if possible and dispose of the article by following all applicable governmental regulations relevant to your geographic location.

Halogen Content	Low Halogen - Br, Cl, F, I < 900 ppm per homogenous material. Also BFR/CFR/PVC Free
Solder Process Capability	Not reviewed for solder process capability

Product Compliance Disclaimer

This information is provided based on reasonable inquiry of our suppliers and represents our current actual knowledge based on the information they provided. This information is subject to change. The part numbers that TE has identified as EU RoHS compliant have a maximum concentration of 0.1% by weight in homogenous materials for lead, hexavalent chromium, mercury, PBB, PBDE, DBP, BBP, DEHP, DIBP, and 0.01% for cadmium, or qualify for an exemption to these limits as defined in the Annexes of Directive 2011/65/EU (RoHS2). Finished electrical and electronic equipment products will be CE marked as required by Directive 2011/65/EU. Components may not be CE marked. Additionally, the part numbers that TE has identified as EU ELV compliant have a maximum concentration of 0.1% by weight in homogenous materials for lead, hexavalent chromium, and mercury, and 0.01% for cadmium, or qualify for an exemption to these limits as defined in the Annexes of Directive 2000/53/EC (ELV). Regarding the REACH Regulation, the information TE provides on SVHC in articles for this part number is based on the latest European Chemicals Agency (ECHA) 'Guidance on requirements for substances in articles' posted at this URL: <https://echa.europa.eu/guidance-documents/guidance-on-reach>

Compatible Parts

TE Part # 2393875-1

Tcvr Kit, 4TRx, 28G, V66.5-D, 3MT

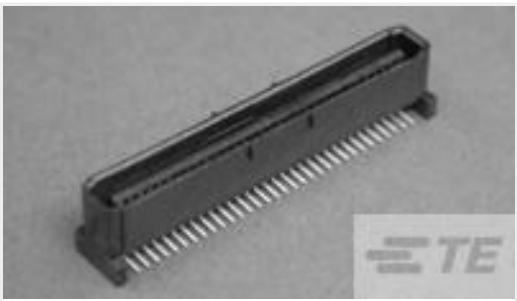
Customers Also Bought

TE Part #2313237-2
RAPLUGASSY,MGRT3,POWER,DP,SE, CENTER

TE Part #1-5120528-1
1FHR,64,50A/S,N,C,S08,09,10

TE Part #2388438-1
Conn Kit, Rcpt, Half-Width, 3MT, V66.5-D

TE Part #1410189-2
MULTIGIG RT T2 7RW H-LFT,ET2



TE Part #2007009-1
1FHR,64,50A/P,N,C,R08,09,10



TE Part #1-2000713-3
RA Keyed Guide Mod, Vita 46, Machined



TE Part #1-1410353-8
MULTIGIG RT 9MM GUIDE/ESD 315



TE Part #1-2000713-0
RA Keyed Guide Mod, Vita 46, Machined



TE Part #1410187-2
MULTIGIG RT T2 7RW DC DF CT 3MM, RT2,DIFF



TE Part #382575-2
2MM MINI-SHUNT ASSEMBLY 15 AU

Documents

Product Drawings

Conn Kit,Rcpt,Full-Width,3-MT,2x,V66.5-D

English

CAD Files

Customer View Model

ENG_CVM_CVM_2388444-1_A1.3d_stp.zip

English

3D PDF

3D

Customer View Model

ENG_CVM_CVM_2388444-1_A1.2d_dxf.zip

English

Customer View Model

ENG_CVM_CVM_2388444-1_A1.3d_igs.zip

English

By downloading the CAD file I accept and agree to the [Terms and Conditions](#) of use.

Product Specifications

Product Specification

English