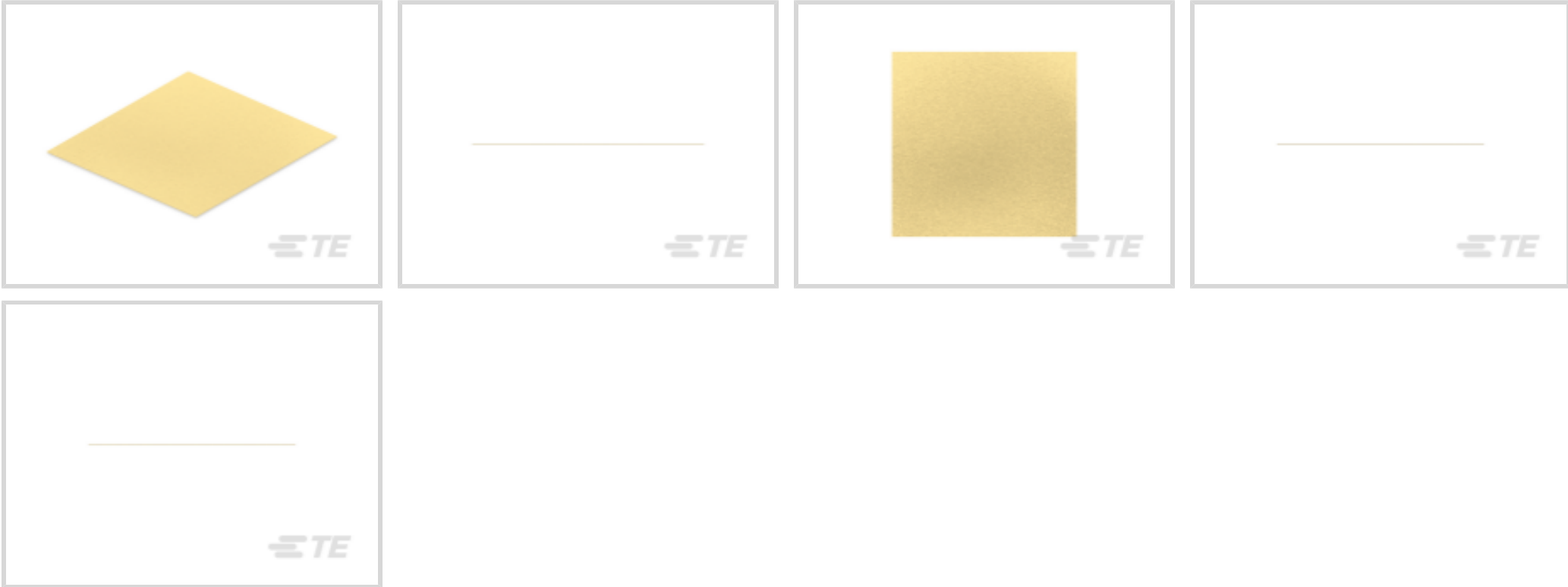




EMI & EMC Solutions > EMI Shielding > EMI Gaskets > Moulded EMI Gasket Conductive Sheet



Gasket Type: Moulded EMI Gasket

Finished Type: Conductive Sheet

Binding Material: Silicone

Filler Material: Silver Plated Aluminum (Ag/Al)

Gasket Shape: Rectangular

[All Moulded EMI Gasket Conductive Sheet \(36\)](#)

Features

Product Type Features

Finished Type	Conductive Sheet
Binding Material	Silicone
Filler Material	Silver Plated Aluminum (Ag/Al)

Electrical Characteristics

Resistance to Petroleum	No
Volume Resistivity (Max)	.008 Ω.cm

Body Features

Gasket Type	Moulded EMI Gasket
Gasket Shape	Rectangular

Dimensions

Product Thickness	1.6 mm[.062 in]
Outside Diameter	150 mm[5.9 in]

Usage Conditions



Operating Temperature Range	-55 – 160 °C[-67 – 320 °F]
-----------------------------	----------------------------

Product Compliance

For compliance documentation, visit the product page on TE.com>

EU RoHS Directive 2011/65/EU	Compliant
EU ELV Directive 2000/53/EC	Compliant
China RoHS 2 Directive MIIT Order No 32, 2016	No Restricted Materials Above Threshold
EU REACH Regulation (EC) No. 1907/2006	Current ECHA Candidate List: JAN 2025 (247) Candidate List Declared Against: JUNE 2024 (241) SVHC > Threshold: DCP (.22% in Component) Article Safe Usage Statements: Do not eat, drink or smoke when using this product. Wash thoroughly after handling. Recycle if possible and dispose of the article by following all applicable governmental regulations relevant to your geographic location.
Halogen Content	Low Bromine/Chlorine - Br and Cl < 900 ppm per homogenous material. Also BFR /CFR/PVC Free
Solder Process Capability	Not reviewed for solder process capability

Product Compliance Disclaimer

This information is provided based on reasonable inquiry of our suppliers and represents our current actual knowledge based on the information they provided. This information is subject to change. The part numbers that TE has identified as EU RoHS compliant have a maximum concentration of 0.1% by weight in homogenous materials for lead, hexavalent chromium, mercury, PBB, PBDE, DBP, BBP, DEHP, DIBP, and 0.01% for cadmium, or qualify for an exemption to these limits as defined in the Annexes of Directive 2011/65/EU (RoHS2). Finished electrical and electronic equipment products will be CE marked as required by Directive 2011/65/EU. Components may not be CE marked. Additionally, the part numbers that TE has identified as EU ELV compliant have a maximum concentration of 0.1% by weight in homogenous materials for lead, hexavalent chromium, and mercury, and 0.01% for cadmium, or qualify for an exemption to these limits as defined in the Annexes of Directive 2000/53/EC (ELV). Regarding the REACH Regulation, the information TE provides on SVHC in articles for this part number is based on the latest European Chemicals Agency (ECHA) 'Guidance on requirements for substances in articles' posted at this URL: <https://echa.europa.eu/guidance-documents/guidance-on-reach>

Compatible Parts

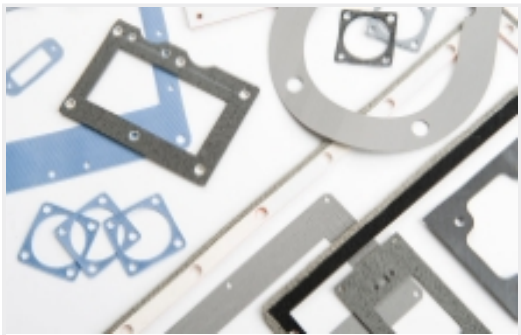
TE Part # CAT-EMIG-0003
Moulded EMI Gasket Conductive Sheet

TE Part # 2452649-1
SNA Sheet 150mm sq x 1.6mm

Also in the Series | **Kemtron 1210 Series**

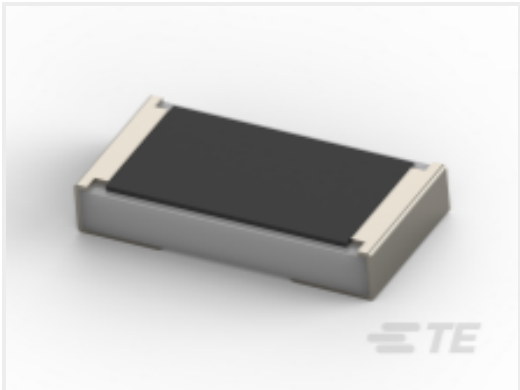


EMI Gaskets(36)

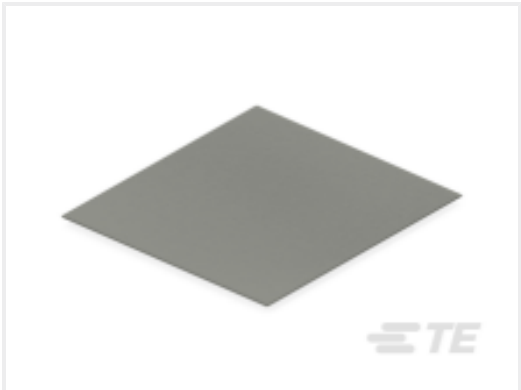


Medical EMI & EMC Solutions(36)

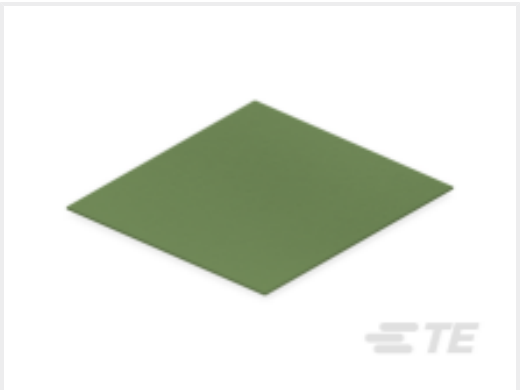
Customers Also Bought



TE Part #CAT-C339-A76B
SMD Power Resistor: 3 Watt, 1% Tol



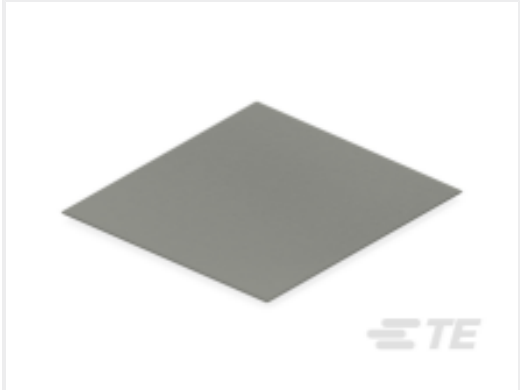
TE Part #CAT-EMIG-0003
Moulded EMI Gasket Conductive Sheet



TE Part #2452672-1
FNA Sheet 150mm sq x 1.6mm



TE Part #206430-1
RECPT, SZ 11-4, CPC



TE Part #2452652-1
SNA Sheet 300mm sq x 1.6mm

Documents

Product Drawings

SSA Sheet 150mm sq x 1.6mm

English

Datasheets & Catalog Pages

Performance Materials brochure

English

Datasheet - Conductive Elastomers

English

Product Specifications

Application Specification

English