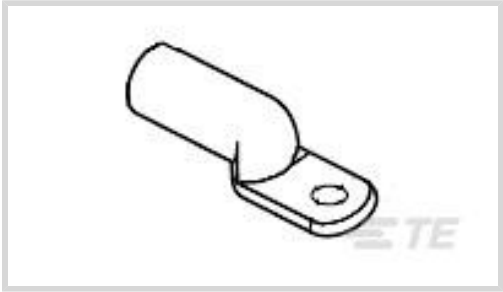




Terminals & Splices > Ring Terminals



Ring Terminal Product Type: Closed Ring Tongue Terminal

Wire Size: 138168 CMA

Stud Size: 3/8

Features

Product Type Features

Ring Terminal Product Type	Closed Ring Tongue Terminal
Stud Size	3/8
Sealable	Yes
Wire Insulation Support Retention Type	Insulation Support

Configuration Features

Number of Holes	1
-----------------	---

Body Features

Product Weight	81 g
----------------	------

Contact Features

Barrel Type	Closed
Terminal Orientation	Straight
Terminal Plating Material	Tin
Contact Underplating Material	None

Dimensions

Wire Size	138168 CMA
Stud Diameter	9.53 mm[.375 in]
Tongue Thickness	3.25 mm[.128 in]
Product Length	71.37 mm[2.8 in]
Barrel Inside Diameter	11.94 mm[.47 in]
Compatible Insulation Diameter (Max)	13.97 mm[.55 in]



Compatible Insulation Diameter Range	12.7 – 13.97 mm[.5 – .55 in]
--------------------------------------	------------------------------

Usage Conditions

Insulation Option	Uninsulated
Operating Temperature Range	-65 – 175 °C[-85 – 347 °F]

Industry Standards

Government Qualified Terminal	No
-------------------------------	----

Packaging Features

Packaging Quantity	25
Packaging Method	Box

Product Compliance

For compliance documentation, visit the product page on [TE.com](#)>

EU RoHS Directive 2011/65/EU	Compliant
EU ELV Directive 2000/53/EC	Compliant
China RoHS 2 Directive MIIT Order No 32, 2016	No Restricted Materials Above Threshold
EU REACH Regulation (EC) No. 1907/2006	Current ECHA Candidate List: JAN 2025 (247) Candidate List Declared Against: JAN 2025 (247) Does not contain REACH SVHC
Halogen Content	Low Halogen - Br, Cl, F, I < 900 ppm per homogenous material. Also BFR/CFR/PVC Free
Solder Process Capability	Not applicable for solder process capability

Product Compliance Disclaimer

This information is provided based on reasonable inquiry of our suppliers and represents our current actual knowledge based on the information they provided. This information is subject to change. The part numbers that TE has identified as EU RoHS compliant have a maximum concentration of 0.1% by weight in homogenous materials for lead, hexavalent chromium, mercury, PBB, PBDE, DBP, BBP, DEHP, DIBP, and 0.01% for cadmium, or qualify for an exemption to these limits as defined in the Annexes of Directive 2011/65/EU (RoHS2). Finished electrical and electronic equipment products will be CE marked as required by Directive 2011/65/EU. Components may not be CE marked. Additionally, the part numbers that TE has identified as EU ELV compliant have a maximum concentration of 0.1% by weight in homogenous materials for lead, hexavalent chromium, and mercury, and 0.01% for cadmium, or qualify for an exemption to these limits as defined in the Annexes of Directive 2000/53/EC (ELV). Regarding the REACH Regulation, the information TE provides on SVHC in articles for this part number is based on the latest European Chemicals Agency (ECHA) 'Guidance on requirements for substances in articles' posted at this URL: <https://echa.europa.eu/guidance-documents/guidance-on-reach>

Compatible Parts



TE Part # 595233-000
[CMC-0553-00-9](#)



TE Part # 314964-1
[HYP8/10 COPALUM SEALED 2/0AWG DIE SET](#)



TE Part # 265184-000
[44A0811-00-9](#)

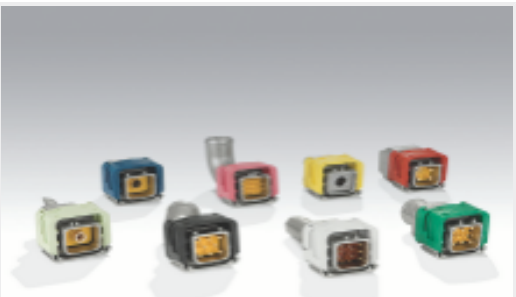


TE Part # 68011-1
[HYP8/10 COPALUM SEALED 2/0AWG DIE SET](#)

Customers Also Bought



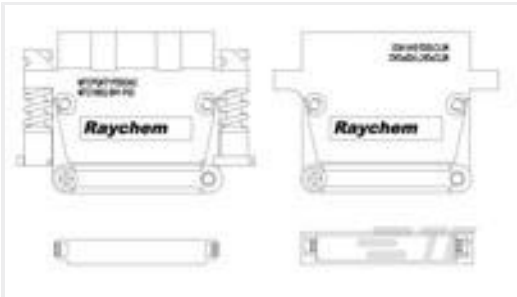
TE Part #323985
[TERMINAL, PIDG R 24-20 4](#)



TE Part #ZPF000000000100854
[DMC-MD 20 B](#)



TE Part #CB4686-000
[D-500-0463-H44-R120](#)



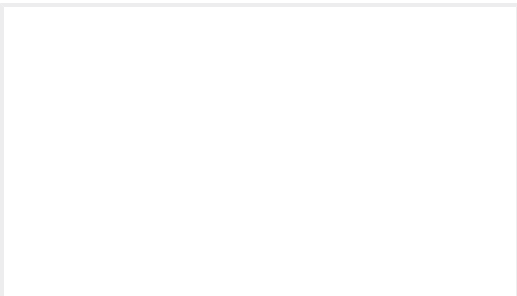
TE Part #F54067-000
[MTCPQKT2P26PFCA](#)



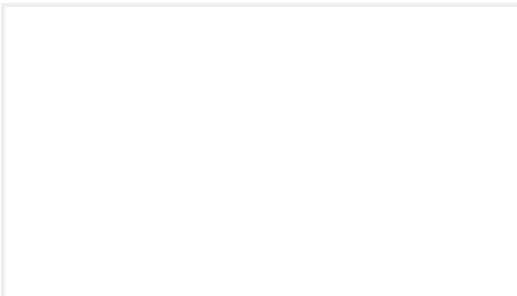
TE Part #1616058-6
[A703CD \(FAA/PMA\)=RELAY](#)



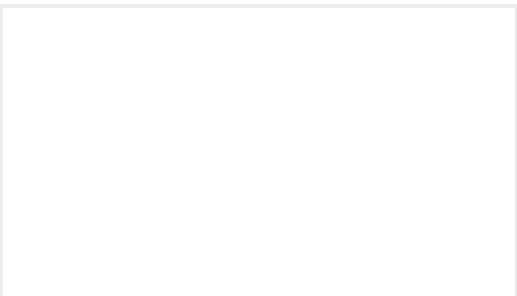
TE Part #277159-1
[SPLICE, COPALUM BUTT, 2 AL, 4 CU](#)



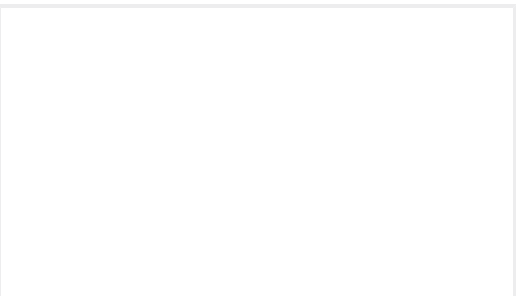
TE Part #CY0310-000
[82A6039-0000-9CS3200](#)



TE Part #2291686-1
[COPALUM, SLD, R, 1 CU 3/8](#)



TE Part #2331835-1
[TERMINAL, COPALUM R 1/0 3/8](#)



TE Part #696849-1
[COPALUM, SEALED, BS, 4/0AL-3/0CU](#)

Documents

Product Drawings

[TERMINAL, COPALUM R 2/0 3/8](#)

English

CAD Files

Customer View Model

[ENG_CVM_277152-4_J.3d_igs.zip](#)

English

Customer View Model



[ENG_CVM_277152-4_J.3d_stp.zip](#)

English

Customer View Model

[ENG_CVM_277152-4_J.2d_dxf.zip](#)

English

3D PDF

English

By downloading the CAD file I accept and agree to the [Terms and Conditions](#) of use.

Datasheets & Catalog Pages

[COPALUM Lite Sealed Terminals and Splices](#)

English

Product Specifications

[Application Specification](#)

English

Instruction Sheets

[Instruction Sheet \(U.S.\)](#)

English