



Sliver for SFF-TA-1002

TE Internal #: 2821385-2

Sliver Cable Assembly, 74 Position, 1 m, 12 Gb/s, 33 AWG, Sliver Plug End A, Sliver Plug End B, High Speed, 48 Signal Positions, VW-1

[View on TE.com >](#)

Cable Assemblies > Copper Cable Assemblies > Internal I/O Cable Assemblies



Cable Assembly Type: **Sliver**
Number of Positions: **74**
Cable Assembly Length: **1 m**
Data Rate: **12 Gb/s**
Cable Style: **Ribbon Cable**

Features

Product Type Features

Cable Assembly Type	Sliver
Cable Style	Ribbon Cable
Cable Assembly (End A)	Sliver Plug
Cable Assembly (End B)	Sliver Plug
Cable Assembly Category	High Speed

Configuration Features

Number of Positions	74
Number of Signal Positions	48

Signal Characteristics

Data Rate	12 Gb/s
-----------	---------

Body Features

Cable Flammability Rating	VW-1
---------------------------	------

Dimensions

Wire Size	33 AWG
-----------	--------

Operation/Application

Halogen Free	No
--------------	----

Other



Cable Assembly Configuration	Double Ended
Cable Assembly Length	1 m

Product Compliance

For compliance documentation, visit the product page on TE.com>

EU RoHS Directive 2011/65/EU	Compliant
EU ELV Directive 2000/53/EC	Compliant
China RoHS 2 Directive MIIT Order No 32, 2016	No Restricted Materials Above Threshold
EU REACH Regulation (EC) No. 1907/2006	Current ECHA Candidate List: JAN 2025 (247) Candidate List Declared Against: JAN 2025 (247) SVHC > Threshold: Melamine (2.5% in 12474182474) Article Safe Usage Statements: Wash thoroughly after handling. Do not handle until all safety precautions have been read and understood. Recycle if possible and dispose of the article by following all applicable governmental regulations relevant to your geographic location.
Halogen Content	Not Low Halogen - contains Br or Cl > 900 ppm.
Solder Process Capability	Not applicable for solder process capability

Product Compliance Disclaimer

This information is provided based on reasonable inquiry of our suppliers and represents our current actual knowledge based on the information they provided. This information is subject to change. The part numbers that TE has identified as EU RoHS compliant have a maximum concentration of 0.1% by weight in homogenous materials for lead, hexavalent chromium, mercury, PBB, PBDE, DBP, BBP, DEHP, DIBP, and 0.01% for cadmium, or qualify for an exemption to these limits as defined in the Annexes of Directive 2011/65/EU (RoHS2). Finished electrical and electronic equipment products will be CE marked as required by Directive 2011/65/EU. Components may not be CE marked. Additionally, the part numbers that TE has identified as EU ELV compliant have a maximum concentration of 0.1% by weight in homogenous materials for lead, hexavalent chromium, and mercury, and 0.01% for cadmium, or qualify for an exemption to these limits as defined in the Annexes of Directive 2000/53/EC (ELV). Regarding the REACH Regulation, the information TE provides on SVHC in articles for this part number is based on the latest European Chemicals Agency (ECHA) 'Guidance on requirements for substances in articles' posted at this URL: <https://echa.europa.eu/guidance-documents/guidance-on-reach>

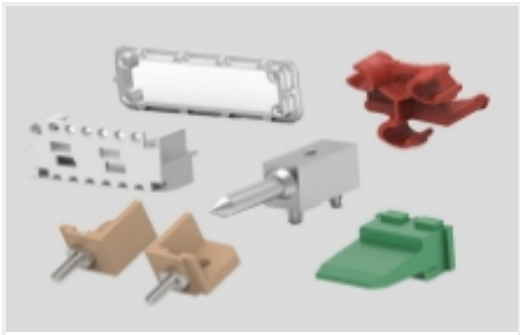
Compatible Parts

TE Part # 2292069-1
RCPT ASSEMBLY SMT RA 74 POSN
MBC

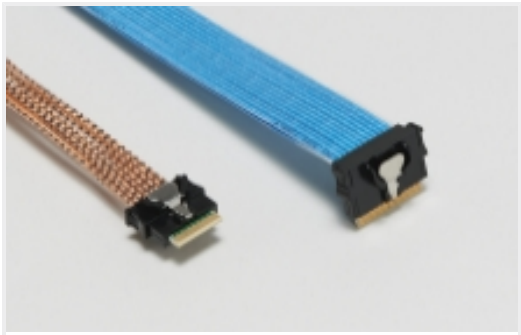
TE Part # 2291316-1
RCPT CONN VERTICAL 74 POSN
SLIVER



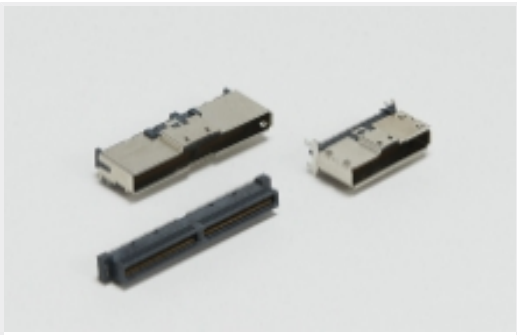
Also in the Series | [Sliver for SFF-TA-1002](#)



[Connector Hardware\(1\)](#)



[Internal I/O Cable Assemblies\(105\)](#)



[Internal I/O Connectors\(133\)](#)

Customers Also Bought



TE Part #2821385-1
[SLIVER C/A, 74P, R/A TO R/A, 10GHZ, 85OHM](#)

Documents

Product Drawings

[SLIVER C/A, 74P, R/A TO R/A, 10GHZ,85OHM](#)

English

CAD Files

[3D PDF](#)

3D

Customer View Model

[ENG_CVM_CVM_2821385-2_A.2d_dxf.zip](#)

English

Customer View Model

[ENG_CVM_CVM_2821385-2_A.3d_igs.zip](#)

English

Customer View Model

[ENG_CVM_CVM_2821385-2_A.3d_stp.zip](#)

English

By downloading the CAD file I accept and agree to the [Terms and Conditions](#) of use.

Datasheets & Catalog Pages

[Sliver Cable Assembly Technical Datasheet](#)

English

[Sliver Internal Cabled Interconnect Solutions Brochure \(Chinese\)](#)