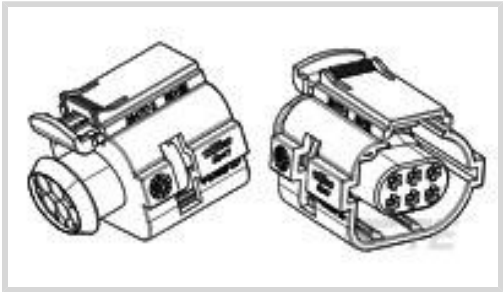




Connectors > Automotive Connectors > Automotive Housings > Timer Connector Housing



Number of Positions: 6

Connector & Housing Type: **Housing for Female Terminals**

Mating Tab Width: 1.6 mm [.062 in]

Connector System: **Wire-to-Board, Wire-to-Wire**

Centerline (Pitch): 4 mm [.15 in]

[All Timer Connector Housing \(437\)](#)

Features

Product Type Features

Mixed & Hybrid Connector	No
Connector Shape	Rectangular
Connector & Housing Type	Housing for Female Terminals
Connector System	Wire-to-Board, Wire-to-Wire
Sealable	Yes
Primary Locking Feature	On the Terminal
Connector & Contact Terminates To	Wire & Cable

Configuration Features

Number of Positions	6
Number of Rows	2

Electrical Characteristics

Operating Voltage	24 VDC
-------------------	--------

Body Features

Cable Exit Angle	180°
Primary Product Color	Black

Contact Features

--	--



Contact Size	1.6mm
Contact Type	Receptacle
Mating Tab Width	1.6 mm[.062 in]
Contact Current Rating (Max)	10 A

Mechanical Attachment

Strain Relief	Without
Terminal Position Assurance	Yes
Mating Alignment Type	Polarization
Mating Alignment	With
Connector Mounting Type	Cable Mount (Free-Hanging)

Housing Features

Housing Material	PA GF
Centerline (Pitch)	4 mm[.15 in]

Dimensions

Row-to-Row Spacing	5 mm[.19 in]
Product Width	24.2 mm[.95 in]
Product Length	29.4 mm[1.15 in]
Connector Height	30.3 mm[1.19 in]

Usage Conditions

Operating Temperature (Max)	140 °C[284 °F]
Operating Temperature Range	-40 – 140 °C[-40 – 284 °F]

Operation/Application

Circuit Application	Signal
---------------------	--------

Packaging Features

Packaging Method	Bag
------------------	-----

Other

Serviceable	Yes
Connector Position Assurance Capable	Yes

Product Compliance

For compliance documentation, visit the product page on TE.com>

EU RoHS Directive 2011/65/EU	Compliant
------------------------------	-----------



EU ELV Directive 2000/53/EC	Compliant
China RoHS 2 Directive MIIT Order No 32, 2016	No Restricted Materials Above Threshold
EU REACH Regulation (EC) No. 1907/2006	Current ECHA Candidate List: JAN 2025 (247) Candidate List Declared Against: JAN 2025 (247) Does not contain REACH SVHC
Halogen Content	BFR/CFR/PVC Free, but Br/Cl >900 ppm in other sources.
Solder Process Capability	Not applicable for solder process capability

Product Compliance Disclaimer

This information is provided based on reasonable inquiry of our suppliers and represents our current actual knowledge based on the information they provided. This information is subject to change. The part numbers that TE has identified as EU RoHS compliant have a maximum concentration of 0.1% by weight in homogenous materials for lead, hexavalent chromium, mercury, PBB, PBDE, DBP, BBP, DEHP, DIBP, and 0.01% for cadmium, or qualify for an exemption to these limits as defined in the Annexes of Directive 2011/65/EU (RoHS2). Finished electrical and electronic equipment products will be CE marked as required by Directive 2011/65/EU. Components may not be CE marked. Additionally, the part numbers that TE has identified as EU ELV compliant have a maximum concentration of 0.1% by weight in homogenous materials for lead, hexavalent chromium, and mercury, and 0.01% for cadmium, or qualify for an exemption to these limits as defined in the Annexes of Directive 2000/53/EC (ELV). Regarding the REACH Regulation, the information TE provides on SVHC in articles for this part number is based on the latest European Chemicals Agency (ECHA) 'Guidance on requirements for substances in articles' posted at this URL: <https://echa.europa.eu/guidance-documents/guidance-on-reach>

Compatible Parts



TE Part # CAT-T4827-T273
TIMER, RECEPTACLE AND TAB



TE Part # 963530-1
EINZELLEITERDICHTNG




TE Part # 964972-1
EINZELLEITERDICHTNG

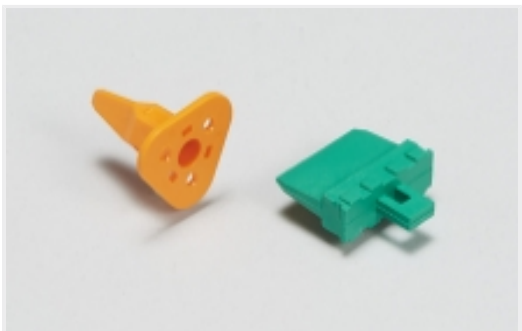


TE Part # 963531-1
BLINDSTOPFEN


Also in the Series | Junior Power Timer




Automotive Connector Caps & Covers (12)



Automotive Connector Locks & Position Assurance(15)



Automotive Housings(188)



Automotive Terminals(110)



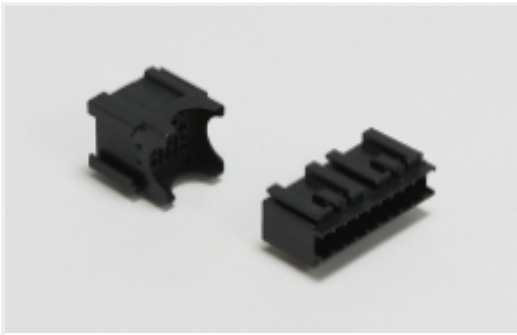
Busbars & Terminals(1)



Connector Seals & Cavity Plugs(36)



Insertion & Extraction Tools(18)



Module Components(1)



Other Automotive Connector Accessories(1)

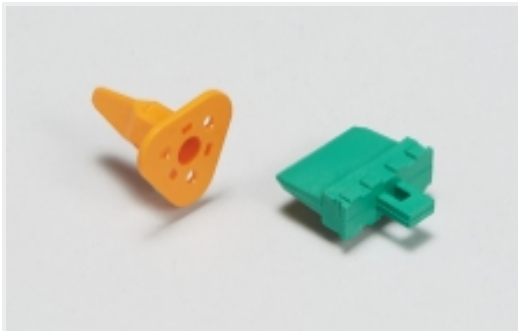


Special Purpose Terminals(2)

Also in the Series | **Timer Connector System**



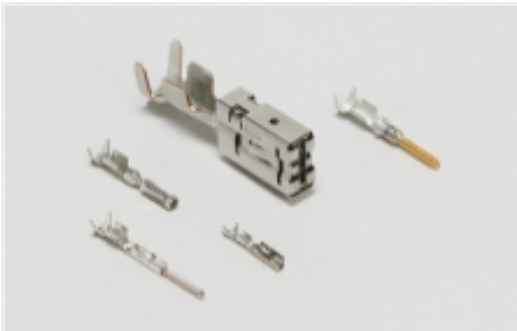
Automotive Connector Caps & Covers (12)



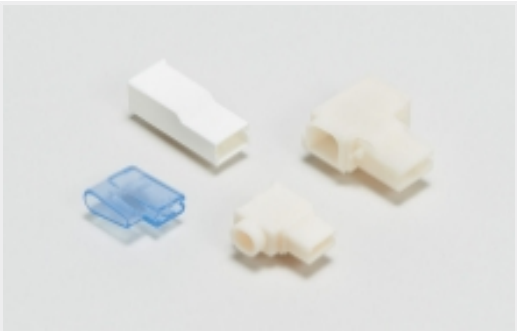
Automotive Connector Locks & Position Assurance(15)



Automotive Housings(188)



Automotive Terminals(110)



Crimp Terminal Housings(13)



Other Automotive Connector Accessories(1)



Quick Disconnects(4)



Rectangular Power Connectors(2)

Customers Also Bought



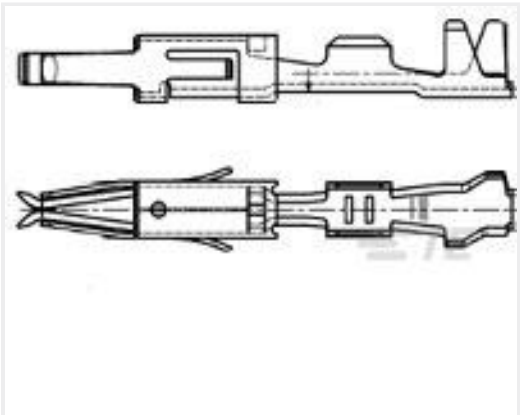
TE Part #2112502-1
38POS, MIXED,REC HSG,ASSY,
SEALED



TE Part #2345390-2
3POS,AMP MCP 2.8,REC HSG ASSY,
SLD,COD 2



TE Part #284802-1
6POS MQS REC COD A



TE Part #962876-2
MT2 REC 1.6 Contact SWS Sn



TE Part #2208729-1
COVER,OUTGOING VERTICAL,ASSY



TE Part #1-1718624-2
2 POS HSG AMP MCP 2.8 ASSY



TE Part #2345388-1
2POS,AMP MCP 2.8,REC HSG ASSY,
SLD,COD 1



TE Part #2345394-1
4POS,AMP MCP 2.8,REC HSG ASSY,
SLD,COD 1



TE Part #1-2203771-2
Plug Ass'y, 3P Sealed, Key B, CPA



TE Part #2345390-1
3POS,AMP MCP 2.8,REC HSG ASSY,
SLD,COD 1

Documents

Product Drawings

6 P. REC CONN X UEGO CONN

English

CAD Files

3D PDF

3D

Customer View Model

ENG_CVM_CVM_284716-4_D.2d_dxf.zip

English

Customer View Model

ENG_CVM_CVM_284716-4_D.3d_igs.zip

English

Customer View Model

ENG_CVM_CVM_284716-4_D.3d_stp.zip

English

By downloading the CAD file I accept and agree to the [Terms and Conditions](#) of use.

Product Specifications



Product Specification

English

Instruction Sheets

Instruction Sheet (non U.S.)

English