



Connectors > PCB Connectors > Wire-to-Board Connectors > Wire-to-Board Connector Assemblies & Housings



Connector Product Type: **Connector Assembly**

Connector & Housing Type: **Plug to Plug Relay Header**

Connector System: **Wire-to-Wire**

Number of Positions: **6**

Centerline (Pitch): **2 mm [.079 in]**

Features

Product Type Features

Connector Product Type	Connector Assembly
Connector & Housing Type	Plug to Plug Relay Header
Connector System	Wire-to-Wire
Sealable	No
Connector & Contact Terminates To	Wire & Cable

Configuration Features

Number of Power Positions	2
Number of Signal Positions	4
Number of Positions	6
Number of Rows	2

Electrical Characteristics

Operating Voltage	250 VAC
Insulation Resistance	100 MΩ
Dielectric Withstanding Voltage (Max)	1800 VAC

Body Features

Drawer Style	Miniature Power
Primary Product Color	Black



Contact Features

Contact Base Material	Copper Alloy
Contact Type	Pin
Contact Current Rating (Max)	15 A

Termination Features

Termination Method to Wire & Cable	Crimp
------------------------------------	-------

Mechanical Attachment

Panel Mount Feature Type	Mounting Ears
Strain Relief	Without
Panel Mount Feature	With
PCB Mount Retention	Without
Mating Retention	Without
Connector Mounting Type	Panel Mount

Housing Features

Housing Material	Thermoplastic
Centerline (Pitch)	2 mm[.079 in]

Dimensions

Connector Width	18 mm[.709 in]
Compatible Insulation Diameter Range	1.4 – 2.4 mm[.055 – .094 in]
Connector Height	16.4 mm[.646 in]
Wire Size	24 – 16 AWG
Connector Length	33 mm[1.299 in]

Usage Conditions

Operating Temperature Range	-30 – 105 °C[-22 – 221 °F]
-----------------------------	----------------------------

Operation/Application

Circuit Application	Power & Signal
---------------------	----------------

Industry Standards

UL Flammability Rating	UL 94V-0
Glow Wire Rating	Standard Part - Not Glow Wire

Packaging Features

Packaging Method	Tray
Packaging Quantity	400



Product Compliance

For compliance documentation, visit the product page on TE.com>

EU RoHS Directive 2011/65/EU	Compliant
EU ELV Directive 2000/53/EC	Compliant
China RoHS 2 Directive MIIT Order No 32, 2016	No Restricted Materials Above Threshold
EU REACH Regulation (EC) No. 1907/2006	Current ECHA Candidate List: JAN 2025 (247) Candidate List Declared Against: JAN 2025 (247) Does not contain REACH SVHC
Halogen Content	Not Low Halogen - contains Br or Cl > 900 ppm.
Solder Process Capability	Not applicable for solder process capability

Product Compliance Disclaimer

This information is provided based on reasonable inquiry of our suppliers and represents our current actual knowledge based on the information they provided. This information is subject to change. The part numbers that TE has identified as EU RoHS compliant have a maximum concentration of 0.1% by weight in homogenous materials for lead, hexavalent chromium, mercury, PBB, PBDE, DBP, BBP, DEHP, DIBP, and 0.01% for cadmium, or qualify for an exemption to these limits as defined in the Annexes of Directive 2011/65/EU (RoHS2). Finished electrical and electronic equipment products will be CE marked as required by Directive 2011/65/EU. Components may not be CE marked. Additionally, the part numbers that TE has identified as EU ELV compliant have a maximum concentration of 0.1% by weight in homogenous materials for lead, hexavalent chromium, and mercury, and 0.01% for cadmium, or qualify for an exemption to these limits as defined in the Annexes of Directive 2000/53/EC (ELV). Regarding the REACH Regulation, the information TE provides on SVHC in articles for this part number is based on the latest European Chemicals Agency (ECHA) 'Guidance on requirements for substances in articles' posted at this URL: <https://echa.europa.eu/guidance-documents/guidance-on-reach>

Compatible Parts

TE Part # 292184-1  
HYBRID MINI DRAWER REC ASS'Y 6

TE Part # 175149-1  
UNIVERSAL POWER CONN TAB

TE Part # 175150-1  
UNIVERSAL POWER CONN TAB

Also in the Series | CT Hybrid Drawer



Wire-to-Board Connector Assemblies & Housings(16)

Customers Also Bought



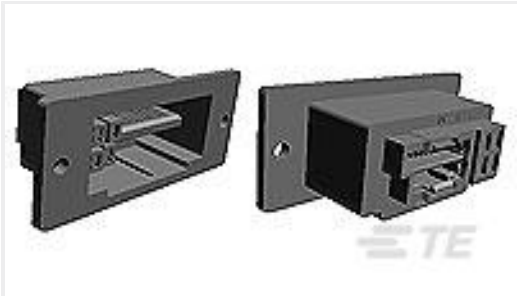
TE Part #292254-9  
CT RELAY HDR ASSY 9P NAT



TE Part #2-1674755-0  
REC ASSY FOR MINI CT HYBRD DR



TE Part #1-179316-2  
HYBRID MINI DRAWER REC CONT.



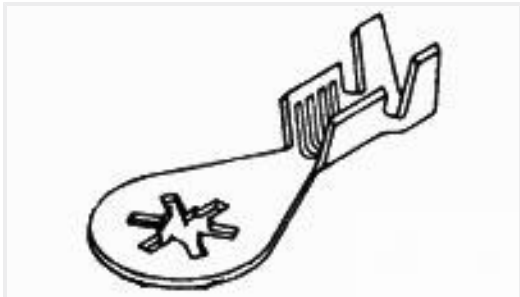
TE Part #2-292246-2  
1.5 MINI CT LATTICE REC KEY A



TE Part #60372-1  
SPLICE 1200-2600 .020 BR



TE Part #175149-2  
AMP UNIVE. POWER CONN TAB CONT



TE Part #640271-3  
RING 22-18 AWG TPST



TE Part #2-353294-8  
AMP MINI D/R HDR HSG 28P NATU



TE Part #61368-1  
250 FASTON REC 24-20 AWG TPBR



TE Part #61624-1  
RING CRIMP 16-12 AWG BR

Documents

CAD Files

3D PDF

English

Customer View Model

ENG\_CVM\_292180-1\_A.2d\_dxf.zip

English

Customer View Model

ENG\_CVM\_292180-1\_A.3d\_igs.zip



English

Customer View Model

ENG\_CVM\_292180-1\_A.3d\_stp.zip

English

By downloading the CAD file I accept and agree to the [Terms and Conditions](#) of use.

Datasheets & Catalog Pages

POWER\_CONNECTORS\_CATALOG\_SEC02\_CABLE\_MOUNTED

English

Low Power Drawer Connectors QRG

English

Product Specifications

Application Specification

English

Crimping Hybrid Mini Drawer Connector Power Line Contact

English

Agency Approvals

UL Report

English