



Energy & Power > Power Cable Accessories > Joints & Splices



Installation Technology: **Power Gel**

Product Availability: **Americas**

Installation Instruction: **English**

Joints & Splice Product Type: **Motor Connection Kit**

Voltage Class: **≤ 1 kV**

Features

Product Type Features

Adhesive Coating	With
Installation Technology	Power Gel
Joints & Splice Product Type	Motor Connection Kit
Closing Method	Snap

Electrical Characteristics

Voltage Class	≤ 1 kV
---------------	--------

Body Features

Flexibility	Semi-Flexible
-------------	---------------

Mechanical Attachment

Mechanical Reinforcement	Molded Cap Clamp
--------------------------	------------------

Dimensions

Compatible Conductor Cross-Section Range	125 – 250 mm²
Compatible Conductor Range	250 – 500 AWG/kcmil
Compatible Cable Cross-Section - Main (Max)	250 mm²
Compatible Cable Cross-Section - Main (Min)	125 mm²

Usage Conditions

Operating Temperature Range	-40 – 105 °C
-----------------------------	--------------



Fluid Resistance Type	Motor Oil, Sodium Hydroxide, Sulfuric Acid, Transformer Oil
Environmental Resistance	Moisture, Self-Sealing

Operation/Application

Mechanical Resistance	Abrasion Resistant (2040 gm wt, 4000 cycles, 5% max thickness loss), Against Mechanical Impact or Damage
UV-Stabilized	Yes
Thermal Resistance	Applicable for Low Temperatures, Applicable for High Temperatures, Flame-Retardant

Industry Standards

Compatible With Approved Standards Products	ANSI C119.1, UL
---	-----------------

Product Availability

Product Availability	Americas
----------------------	----------

Packaging Features

Packaging Method	Bag
Packaging Quantity	1

Other

Product Use	PowerGel-filled cap for motor lead and stub splice connections
Installation Instruction	English

Product Compliance

For compliance documentation, visit the product page on TE.com>

EU RoHS Directive 2011/65/EU	Compliant
EU ELV Directive 2000/53/EC	Compliant
China RoHS 2 Directive MIIT Order No 32, 2016	No Restricted Materials Above Threshold
EU REACH Regulation (EC) No. 1907/2006	Current ECHA Candidate List: JAN 2025 (247) Candidate List Declared Against: JAN 2021 (211) Does not contain REACH SVHC
Halogen Content	Low Halogen - Br, Cl, F, I < 900 ppm per homogenous material. Also BFR/CFR/PVC Free
Solder Process Capability	Not applicable for solder process capability



Product Compliance Disclaimer

This information is provided based on reasonable inquiry of our suppliers and represents our current actual knowledge based on the information they provided. This information is subject to change. The part numbers that TE has identified as EU RoHS compliant have a maximum concentration of 0.1% by weight in homogenous materials for lead, hexavalent chromium, mercury, PBB, PBDE, DBP, BBP, DEHP, DIBP, and 0.01% for cadmium, or qualify for an exemption to these limits as defined in the Annexes of Directive 2011/65/EU (RoHS2). Finished electrical and electronic equipment products will be CE marked as required by Directive 2011/65/EU. Components may not be CE marked. Additionally, the part numbers that TE has identified as EU ELV compliant have a maximum concentration of 0.1% by weight in homogenous materials for lead, hexavalent chromium, and mercury, and 0.01% for cadmium, or qualify for an exemption to these limits as defined in the Annexes of Directive 2000/53/EC (ELV). Regarding the REACH Regulation, the information TE provides on SVHC in articles for this part number is based on the latest European Chemicals Agency (ECHA) ‘Guidance on requirements for substances in articles’ posted at this URL: <https://echa.europa.eu/guidance-documents/guidance-on-reach>

Compatible Parts



TE Part # 632692-000  
GELCAP-3(B5)



TE Part # F40658-000  
GELCAP-SL-2/0-3HOLE(B10)



TE Part # 566376-000  
GELCAP-1(B5)



TE Part # 986734-000  
GELCAP-2(B5)



TE Part # CP1967-000  
GELCAP-SL-2/0-3HOLE-B100

Also in the Series | RAYCHEM GelCap



Insulation Piercing Connectors(2)



Joints & Splices(4)

Customers Also Bought



TE Part #1-1393127-6  
PRD-11AH0-120=PRD



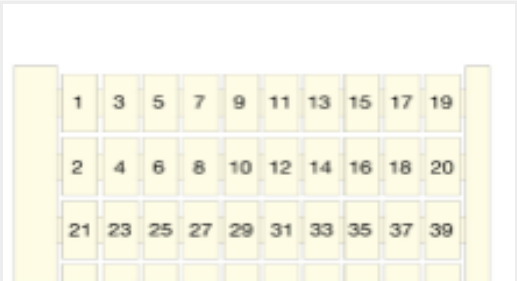
TE Part #1SNK705214R0000  
ZK2.5-D-CH-DU



TE Part #2-1393122-8  
KHAU-17A12-120=KH



TE Part #1423171-7  
E7022PD004=RLY,NUC,OFF,2P,125



TE Part #1SNA231030R2400  
RC510 1->100 HORIZONTAL



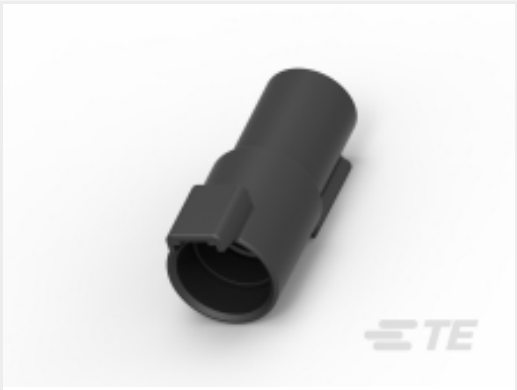
TE Part #1SNA199095R1300  
ML10/13.SF



TE Part #1393105-3  
KRPA-5DG-12=KRPA



TE Part #632692-000  
GELCAP-3(B5)



TE Part #DTHD04-1-8P  
REC, 1P, BLK, N, SIZE 8



TE Part #A98934-000  
GELCAP-8-NS-1V(B1)

Documents

Datasheets & Catalog Pages  
GELCAP-MOTOR-CONNECTION-CABLE-ACCESSORIES

English

Instruction Sheets  
Instruction Sheet (U.S.)

English