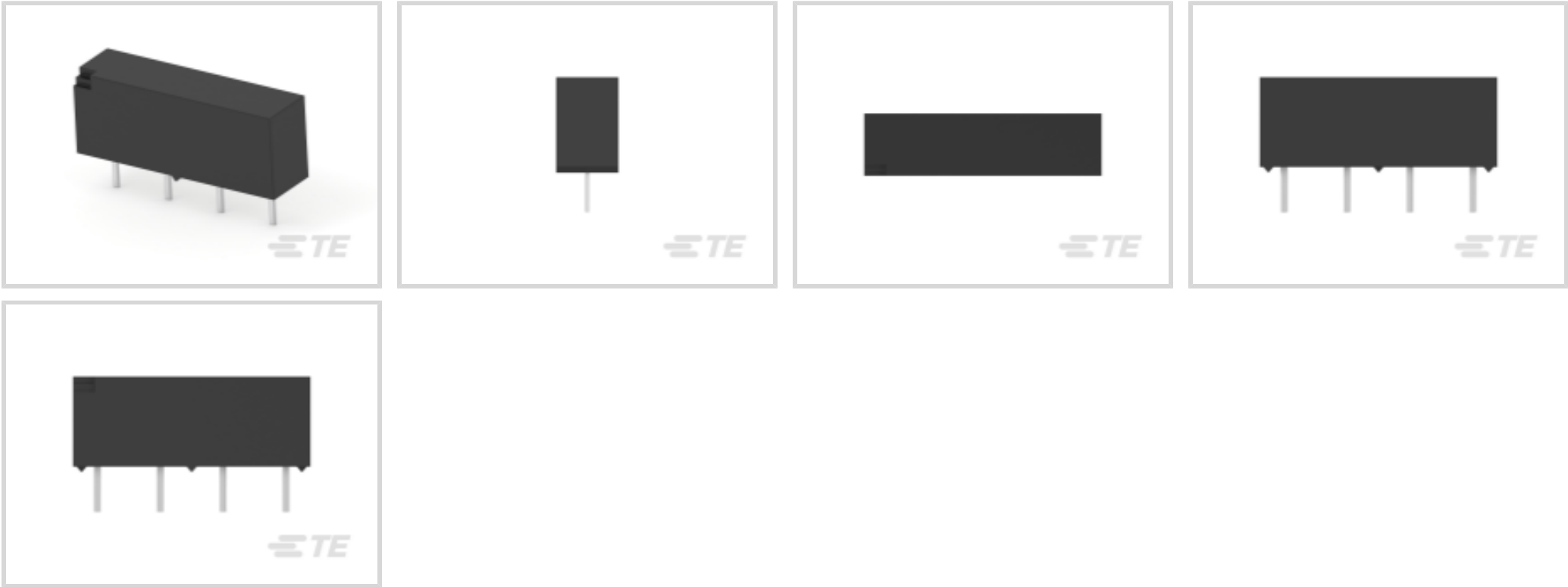




Relays & Contactors > Electromechanical Relays



Relay & Contactor Type: **Reed Relay**

Current Type: **DC**

Coil Magnetic System: **Monostable**

Contact Arrangement: **1 Form C SPDT-CO**

Contact Current Rating: **.05 A**

Features

Product Type Features

| | |
|------------------------|------------|
| Relay & Contactor Type | Reed Relay |
|------------------------|------------|

Configuration Features

| | |
|-------------------------|---------------------------|
| Relay Options | Power Switching, RF Rated |
| Contact Number of Poles | 1 |
| Coil Special Features | UL Coil Insulation |
| Contact Arrangement | 1 Form C SPDT-CO |

Electrical Characteristics

| | |
|---|-------------|
| Contact Limiting Short-Time Current | .5 A |
| Contact Limiting Making Current | .5 A |
| Contact Limiting Continuous Current | .5 A |
| Contact Limiting Breaking Current | .5 A |
| Insulation Initial Dielectric Between Open Contacts | 250 Vrms |
| Contact Switching Voltage (Max) | 100 VDC |
| Contact Switching Load (Min) | 10mA @ .01V |
| Coil Resistance | 500 Ω |



| | |
|---|----------|
| Insulation Initial Resistance | 1000 MΩ |
| Contact Current Rating | .05 A |
| Coil Voltage Rating | 5 VDC |
| Contact Voltage Rating | 20 VDC |
| Coil Power Rating DC | .05 W |
| Insulation Initial Dielectric Between Contacts & Coil | 500 Vrms |

Signal Characteristics

| | |
|-------------------------------|----------------------------------|
| Isolation (HF Parameter) | -18dB @ 900MHz, -30dB @ 100MHz |
| Insertion Loss (HF Parameter) | -.12dB @ 100MHz, -1.9dB @ 900MHz |

Body Features

| | |
|----------------|--|
| Product Weight | 2.3 g[.0811 oz] |
| Enclosure Type | Flux Resistant Automatic Solder Capable & Washable |

Contact Features

| | |
|------------------|-----------|
| Contact Material | Ruthenium |
|------------------|-----------|

Termination Features

| | |
|------------------------------------|-------------|
| Main Termination & Connection Type | Solder Pins |
| Coil Termination & Connection Type | Solder Pins |

Mechanical Attachment

| | |
|--------------------|-------------|
| Product Mount Type | Board Mount |
|--------------------|-------------|

Dimensions

| | |
|----------------|-----------------|
| Product Width | 6.6 mm[.26 in] |
| Product Length | 20.32 mm[.8 in] |
| Product Height | 7.8 mm[.307 in] |

Usage Conditions

| | |
|---|--------------|
| Operating Temperature Range | -35 – 85 °C |
| Environmental Category of Protection | RTIII |
| Environmental Ambient Temperature (Max) | 85 °C[85 °F] |

Operation/Application

| | |
|----------------------|---------------------|
| Solder Process | Wave Solder Capable |
| Current Type | DC |
| Coil Magnetic System | Monostable |



Packaging Features

| | |
|------------------|------------------|
| Packaging Method | Box & Tray, Tray |
|------------------|------------------|

Other

| | |
|---|------------|
| Coil Power Rating Class | 0 – .1 W |
| Contact Current Class | 0 – 2 A |
| Environmental Ambient Temperature Class | 70 – 85 °C |
| Height Class (Mechanical) | 7 – 8 mm |
| Length Class (Mechanical) | 20 – 25 mm |
| Width Class (Mechanical) | 6 – 8 mm |

Product Compliance

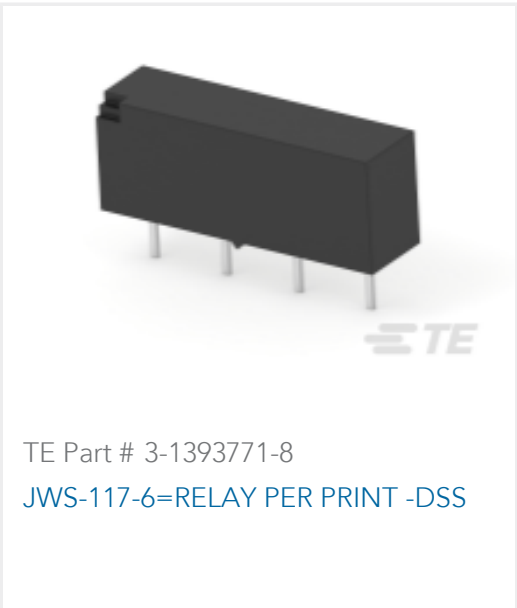
For compliance documentation, visit the product page on TE.com>

| | |
|---|---|
| EU RoHS Directive 2011/65/EU | Compliant |
| EU ELV Directive 2000/53/EC | Out of Scope |
| China RoHS 2 Directive MIIT Order No 32, 2016 | No Restricted Materials Above Threshold |
| EU REACH Regulation (EC) No. 1907/2006 | Current ECHA Candidate List: JAN 2025 (247) Candidate List Declared Against: JAN 2025 (247) Does not contain REACH SVHC |
| Halogen Content | Not Low Halogen - contains Br or Cl > 900 ppm. |
| Solder Process Capability | Wave solder capable to 260°C |

Product Compliance Disclaimer

This information is provided based on reasonable inquiry of our suppliers and represents our current actual knowledge based on the information they provided. This information is subject to change. The part numbers that TE has identified as EU RoHS compliant have a maximum concentration of 0.1% by weight in homogenous materials for lead, hexavalent chromium, mercury, PBB, PBDE, DBP, BBP, DEHP, DIBP, and 0.01% for cadmium, or qualify for an exemption to these limits as defined in the Annexes of Directive 2011/65/EU (RoHS2). Finished electrical and electronic equipment products will be CE marked as required by Directive 2011/65/EU. Components may not be CE marked. Additionally, the part numbers that TE has identified as EU ELV compliant have a maximum concentration of 0.1% by weight in homogenous materials for lead, hexavalent chromium, and mercury, and 0.01% for cadmium, or qualify for an exemption to these limits as defined in the Annexes of Directive 2000/53/EC (ELV). Regarding the REACH Regulation, the information TE provides on SVHC in articles for this part number is based on the latest European Chemicals Agency (ECHA) ‘Guidance on requirements for substances in articles’ posted at this URL: <https://echa.europa.eu/guidance-documents/guidance-on-reach>

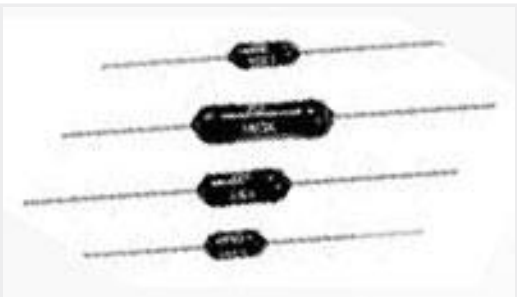
Compatible Parts



TE Part # 3-1393771-8
JWS-117-6=RELAY PER PRINT -DSS

Also in the Series

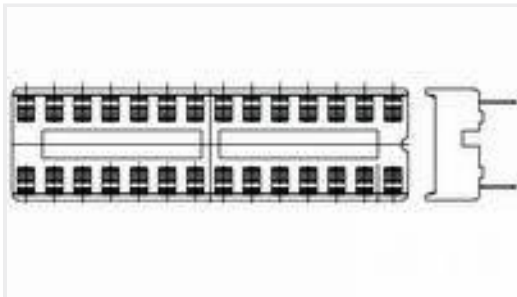
Customers Also Bought



TE Part #7-1879663-8
H8 681R 0.1% 15PPM



TE Part #350778-1
02P UMNL CAP HSG



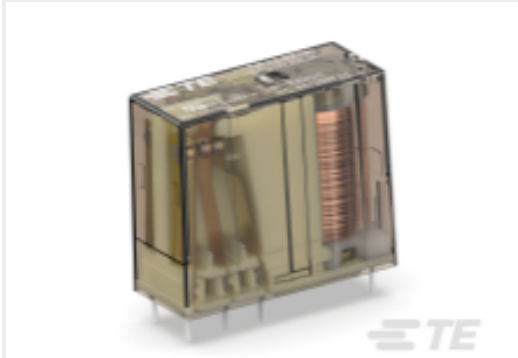
TE Part #1-2199298-2
8P,DIP SKT,300 CL,LDR,PB FREE



TE Part #350550-1
UMNL SOK 20-14 PTPBR L/P



TE Part #CTJ-3D-10
RAIL ASSY



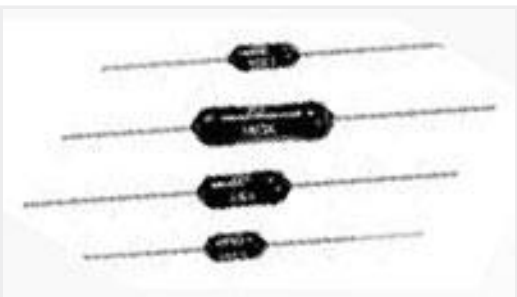
TE Part #6-1415546-5
RP424024



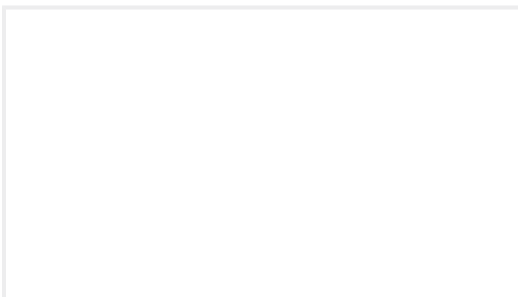
TE Part #350767-1
03P UMNL CAP HSG V0



TE Part #1617149-5
JMGSC-26M = M39016/41-036M



TE Part #1-1879663-4
H8 147R 0.1% 15PPM



TE Part #1-1617003-9
B07B914BC1-0899 = 07 10AMP REL

Documents

CAD Files

3D PDF

3D

Customer View Model

ENG_CVM_CVM_3-1393771-2_99.2d_dxf.zip

English



Customer View Model

[ENG_CVM_CVM_3-1393771-2_99.3d_igs.zip](#)

English

Customer View Model

[ENG_CVM_CVM_3-1393771-2_99.3d_stp.zip](#)

English

By downloading the CAD file I accept and agree to the [Terms and Conditions](#) of use.

Datasheets & Catalog Pages

[JWD/JWS Dual In-Line Package & Single In-Line Package Dry Reed Relays](#)

English

Product Specifications

[Definitions General Purpose Relays](#)

English