



Connectors > RF Connectors > Coax Connectors



RF Interface: **SMA**
RF Connector Style: **Receptacle**
RF Connector Mated Outer Diameter (Approximate): **6.35 mm [.25 in]**
Impedance: **50 Ω**
RF Connector Coupling Mechanism: **Screw**

Features

Product Type Features

Connector Product Type	Connector Assembly
RF Interface	SMA
RF Connector Style	Receptacle
Connector System	Cable-to-Board
Sealable	No
Connector & Contact Terminates To	Printed Circuit Board

Configuration Features

PCB Mount Orientation	Right Angle
Number of Positions	1
Number of Coaxial Contacts	1

Electrical Characteristics

Impedance	50 Ω
-----------	------

Body Features

Body Material	Brass
---------------	-------



Body Plating Material	Gold
-----------------------	------

Contact Features

RF Connector Contact Configuration	Not Captivated
RF Connector Center Contact Underplating Material	Copper
RF Connector Center Contact Plating Material	Gold (Au)
RF Connector Center Contact Material	Phosphor Bronze

Termination Features

Termination Method to PCB	Through Hole - Solder
Termination Post & Tail Length	3.4 mm[.133 in]

Mechanical Attachment

RF Connector Coupling Mechanism	Screw
Connector Mounting Type	Board Mount
RF Contact Captivation Method	Mechanical
Detent	Without

Dimensions

Product Length	13.5 mm[.532 in]
Profile Height from PCB	10.1 mm[.397 in]
RF Connector Mated Outer Diameter (Approximate)	6.35 mm[.25 in]

Usage Conditions

Operating Temperature Range	-65 – 165 °C[-85 – 329 °F]
-----------------------------	----------------------------

Operation/Application

Operating Frequency	6 GHz
---------------------	-------

Packaging Features

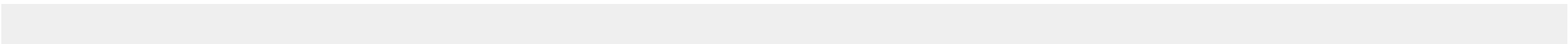
Packaging Quantity	30
Packaging Method	Bag

Other

Grade	Commercial
Dielectric Material	Delrin

Product Compliance

For compliance documentation, visit the product page on TE.com>





EU RoHS Directive 2011/65/EU	Compliant with Exemptions
EU ELV Directive 2000/53/EC	Compliant with Exemptions
China RoHS 2 Directive MIIT Order No 32, 2016	Restricted Materials Above Threshold
EU REACH Regulation (EC) No. 1907/2006	Current ECHA Candidate List: JAN 2025 (247) Candidate List Declared Against: JAN 2025 (247) SVHC > Threshold: Pb (3.15% in M-16003-10) Article Safe Usage Statements: Do not eat, drink or smoke when using this product. Wash thoroughly after handling. Recycle if possible and dispose of the article by following all applicable governmental regulations relevant to your geographic location.
Halogen Content	Low Bromine/Chlorine - Br and Cl < 900 ppm per homogenous material. Also BFR /CFR/PVC Free
Solder Process Capability	Wave solder capable to 265°C

Product Compliance Disclaimer

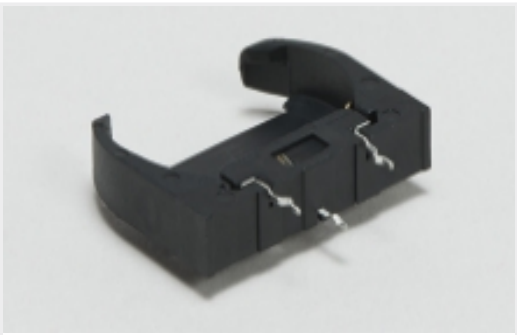
This information is provided based on reasonable inquiry of our suppliers and represents our current actual knowledge based on the information they provided. This information is subject to change. The part numbers that TE has identified as EU RoHS compliant have a maximum concentration of 0.1% by weight in homogenous materials for lead, hexavalent chromium, mercury, PBB, PBDE, DBP, BBP, DEHP, DIBP, and 0.01% for cadmium, or qualify for an exemption to these limits as defined in the Annexes of Directive 2011/65/EU (RoHS2). Finished electrical and electronic equipment products will be CE marked as required by Directive 2011/65/EU. Components may not be CE marked. Additionally, the part numbers that TE has identified as EU ELV compliant have a maximum concentration of 0.1% by weight in homogenous materials for lead, hexavalent chromium, and mercury, and 0.01% for cadmium, or qualify for an exemption to these limits as defined in the Annexes of Directive 2000/53/EC (ELV). Regarding the REACH Regulation, the information TE provides on SVHC in articles for this part number is based on the latest European Chemicals Agency (ECHA) ‘Guidance on requirements for substances in articles’ posted at this URL: <https://echa.europa.eu/guidance-documents/guidance-on-reach>

Compatible Parts

TE Part # 1056462-1
[2837 7388 02](#)

TE Part # 1051664-1
[2031 5012 00](#)

Also in the Series | SMA



Battery Holders(1)



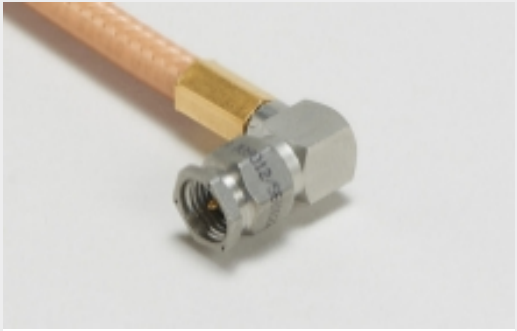
Connector Adapters & Connector Savers(8)



Connector Caps & Covers(3)

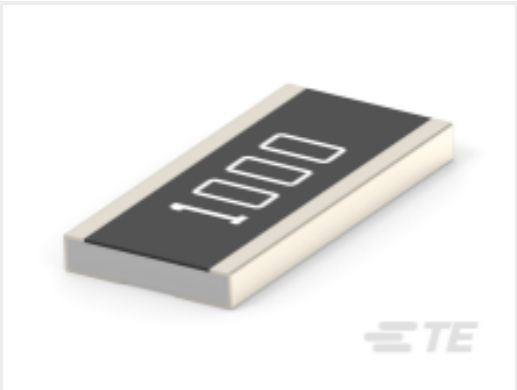


Connector Strain Relief(1)

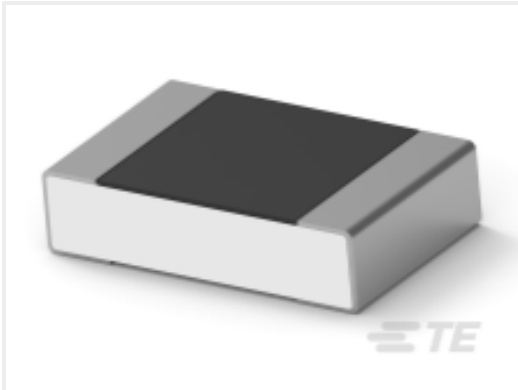


RF Cable Assemblies(2)

Customers Also Bought



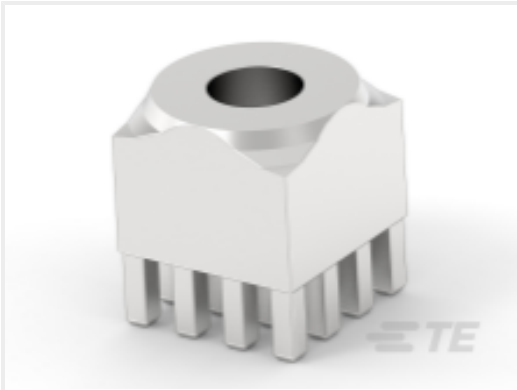
TE Part #1-2176566-3
3430 A3 1% 3R0 200ppm 1k RL



TE Part #2-2176375-8
RQ 0805 2K21 0.1% 10PPM 1K RL



TE Part #7-2176365-7
RQ 0603 249R 0.1% 10PPM 1K RL



TE Part #225683-E
POWELM BUCHSE VOLLM M5 4 2,54
* EP 7 CUS



TE Part #1676218-2
RN 0805 1K02 0.1% 10PPM 1KRL



TE Part #4-1614892-7
CPF 0805 2K74 0.1% 25PPM 1K RL



TE Part #2176376-7
RQ 0805 14K3 0.1% 10PPM 1K RL



TE Part #1676294-3
RN 0805 2K74 0.1% 10PPM 5KRL



TE Part #4-1614893-1
CPF 0805 33K2 0.1% 25PPM 1K RL



TE Part #4-1879273-1
RP 2A 715R 0.1% 15PPM 1K RL

Documents



Product Drawings

SMA R/A PCB SKT GB

English

CAD Files

3D PDF

3D

Customer View Model

ENG_CVM_CVM_3-1478978-1_F.2d_dxf.zip

English

Customer View Model

ENG_CVM_CVM_3-1478978-1_F.3d_igs.zip

English

Customer View Model

ENG_CVM_CVM_3-1478978-1_F.3d_stp.zip

English

By downloading the CAD file I accept and agree to the [Terms and Conditions](#) of use.