

55KEPS10ABSW

✓ ACTIVE

Corcom KEP

TE Internal #: 3-1609968-3

55 A 3-Phase Filter, Terminal Block Input, Terminal Block Output,
WYE (4 wire + ground), 440 VAC, Chassis Mount, Corcom KEP

[View on TE.com >](#)



EMI & EMC Solutions > EMI Filters > Power Line Filters > 3-Phase Filters



Current Rating: 55 A

Input Termination Type: Terminal Block

Output Termination Type: Terminal Block

Wiring Configuration: WYE (4 wire + ground)

Operating Voltage: 440 VAC

Features

Product Type Features

| | |
|-------------------------|----------------|
| Filtering Requirements | Filtered |
| Input Termination Type | Terminal Block |
| Output Termination Type | Terminal Block |

Configuration Features

| | |
|----------------------|-----------------------|
| Wiring Configuration | WYE (4 wire + ground) |
|----------------------|-----------------------|

Electrical Characteristics

| | |
|--------------------------------------|---------|
| Leakage Current (Max) (230VAC, 50Hz) | 6 |
| Current Rating | 55 A |
| Operating Voltage | 440 VAC |

Mechanical Attachment

| | |
|--------------------|---------------|
| Product Mount Type | Chassis Mount |
|--------------------|---------------|

Usage Conditions

| | |
|-----------------------------|-------------|
| Operating Temperature Range | -25 – 85 °C |
|-----------------------------|-------------|



Product Compliance

For compliance documentation, visit the product page on TE.com>

| | |
|---|---|
| EU RoHS Directive 2011/65/EU | Compliant with Exemptions |
| EU ELV Directive 2000/53/EC | Not Compliant |
| China RoHS 2 Directive MIIT Order No 32, 2016 | Restricted Materials Above Threshold |
| EU REACH Regulation (EC) No. 1907/2006 | Current ECHA Candidate List: JAN 2025 (247) Candidate List Declared Against: JUNE 2023 (235) SVHC > Threshold: Pb (3% in Component Part) Article Safe Usage Statements: Do not eat, drink or smoke when using this product. Wash thoroughly after handling. Recycle if possible and dispose of the article by following all applicable governmental regulations relevant to your geographic location. |
| Halogen Content | Low Halogen - Br, Cl, F, I < 900 ppm per homogenous material. Also BFR/CFR/PVC Free |
| Solder Process Capability | Not reviewed for solder process capability |

Product Compliance Disclaimer

This information is provided based on reasonable inquiry of our suppliers and represents our current actual knowledge based on the information they provided. This information is subject to change. The part numbers that TE has identified as EU RoHS compliant have a maximum concentration of 0.1% by weight in homogenous materials for lead, hexavalent chromium, mercury, PBB, PBDE, DBP, BBP, DEHP, DIBP, and 0.01% for cadmium, or qualify for an exemption to these limits as defined in the Annexes of Directive 2011/65/EU (RoHS2). Finished electrical and electronic equipment products will be CE marked as required by Directive 2011/65/EU. Components may not be CE marked. Additionally, the part numbers that TE has identified as EU ELV compliant have a maximum concentration of 0.1% by weight in homogenous materials for lead, hexavalent chromium, and mercury, and 0.01% for cadmium, or qualify for an exemption to these limits as defined in the Annexes of Directive 2000/53/EC (ELV). Regarding the REACH Regulation, the information TE provides on SVHC in articles for this part number is based on the latest European Chemicals Agency (ECHA) ‘Guidance on requirements for substances in articles’ posted at this URL: <https://echa.europa.eu/guidance-documents/guidance-on-reach>

Compatible Parts



TE Part # 3-1609968-2
KEP 42A 1S HIGH PLUS SP BS WYE
440VAC



TE Part # 3-1609968-4
KEP 75A 1S HIGH PLUS SP BS WYE
440VAC

Also in the Series | Corcom KEP

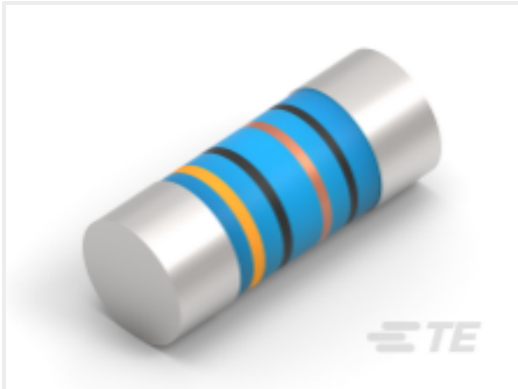


3-Phase Filters(48)

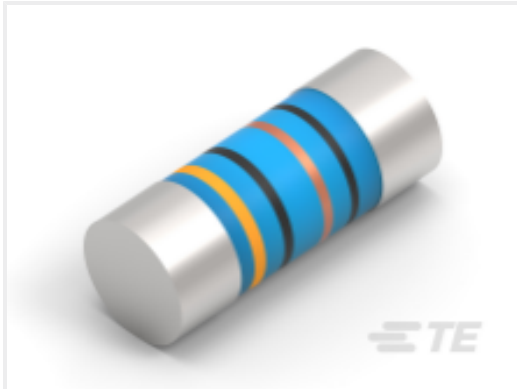
Customers Also Bought



TE Part #2-644488-6
06P MTA100 SHRD HDR F/L R/A SN



TE Part #8-2176316-9
MELF SMA-A 120K 1% 50PPM 0207 1W



TE Part #7-2176316-2
MELF SMA_A 68K 1% 50PPM 0207 1W



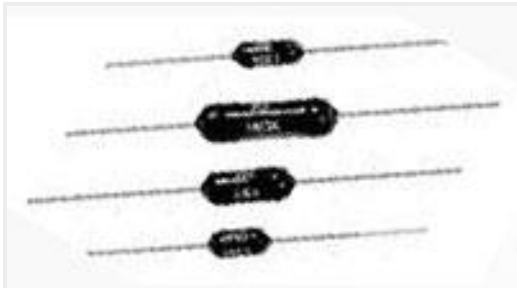
TE Part #535090-4
096 EURO TYPE C RECEPT ST ASSY



TE Part #6-1393252-1
W67-X2Q12-30=M6/M7/M9/W6/W7



TE Part #7-1625890-0
2W SM M/OX 5% 82K



TE Part #5-1879666-4
H8 475K 0.1% 15PPM



TE Part #1-1393767-5
R10-E2X2-V700=R10



TE Part #5-1437595-2
TRD11F10WL=SUB MINI ROCKER BLA



TE Part #1-1393766-9
R10-E1X4-24V=R10

Documents

Product Drawings

KEP 55A 1S HIGH PLUS SP BS WYE 440VAC

English

CAD Files

Customer View Model

ENG_CVM_CVM_3-1609968-3_B.2d_dxf.zip

English

Customer View Model



[ENG_CVM_CVM_3-1609968-3_B.3d_stp.zip](#)

English

Customer View Model

[ENG_CVM_CVM_3-1609968-3_B.3d_igs.zip](#)

English

3D PDF

3D

By downloading the CAD file I accept and agree to the [Terms and Conditions](#) of use.

Datasheets & Catalog Pages

KEP-BS SERIES

English