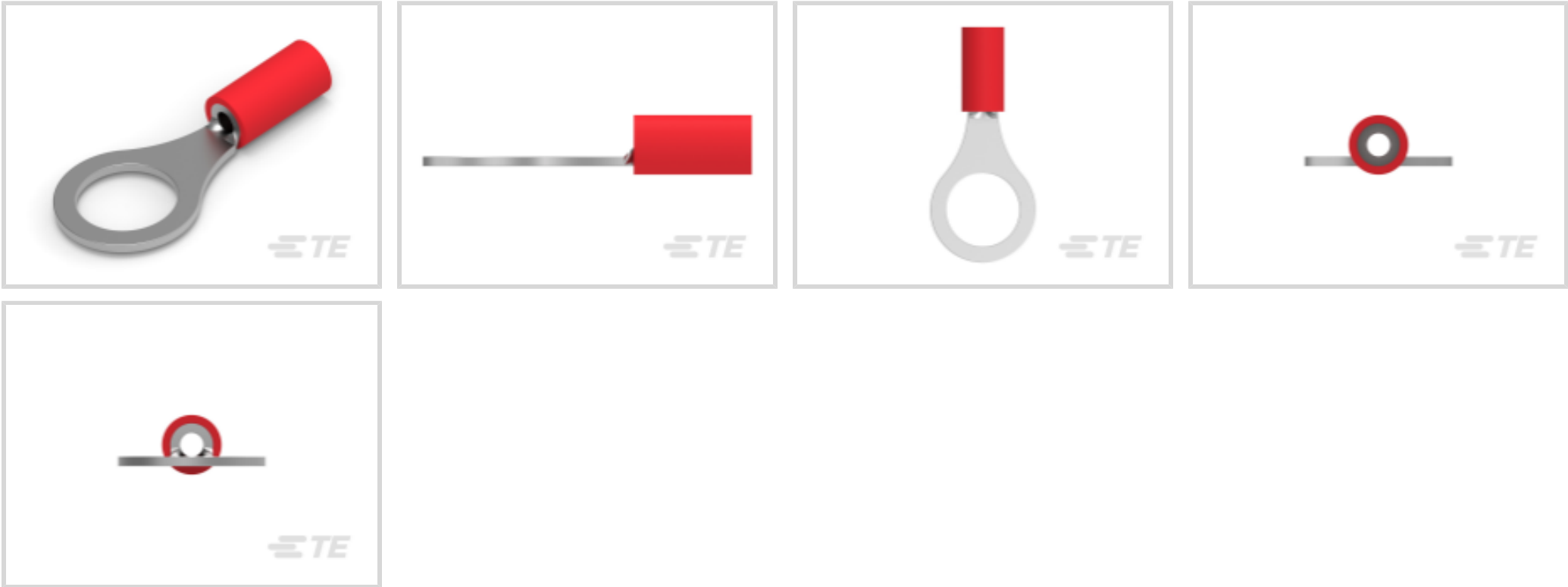




Terminals & Splices > Ring Terminals



Ring Terminal Product Type: Closed Ring Tongue Terminal

Wire Size: 509 – 3260 CMA

Stud Size: 5/16, M8

Features

Product Type Features

Ring Terminal Product Type	Closed Ring Tongue Terminal
Stud Size	5/16, M8
Sealable	No

Wire Insulation Support Retention Type	Insulation Support
--	--------------------

Configuration Features

Number of Holes	1
-----------------	---

Electrical Characteristics

Voltage Rating	600 V
----------------	-------

Body Features

Product Weight	.928 g
----------------	--------

Contact Features

Barrel Type	Closed
Terminal Orientation	Straight
Terminal Plating Material	Tin

Mechanical Attachment

Wire Insulation Support	With
-------------------------	------

Dimensions

Wire Size	509 – 3260 CMA
Stud Diameter	8.33 mm[.328 in]
Tongue Thickness	.79 mm[.031 in]
Product Length	27.69 mm[1.09 in]
Compatible Insulation Diameter (Max)	3.56 mm[.14 in]
Compatible Insulation Diameter Range	2.67 – 3.56 mm[.105 – .14 in]

Usage Conditions

Insulation Option	Partially Insulated
-------------------	---------------------

Operation/Application

Compatible With Wire Base Material	Copper
Compatible With Wire Plating Material	Tin

Industry Standards

Government Qualified Terminal	No
-------------------------------	----

Packaging Features

Packaging Quantity	1000
Packaging Method	Loose Piece

Product Compliance

[For compliance documentation, visit the product page on TE.com>](#)

EU RoHS Directive 2011/65/EU	Compliant
EU ELV Directive 2000/53/EC	Compliant
China RoHS 2 Directive MIIT Order No 32, 2016	No Restricted Materials Above Threshold
EU REACH Regulation (EC) No. 1907/2006	Current ECHA Candidate List: JAN 2025 (247) Candidate List Declared Against: JAN 2025 (247) Does not contain REACH SVHC
Halogen Content	Not Low Halogen - contains Br or Cl > 900 ppm.
Solder Process Capability	Not applicable for solder process capability

Product Compliance Disclaimer



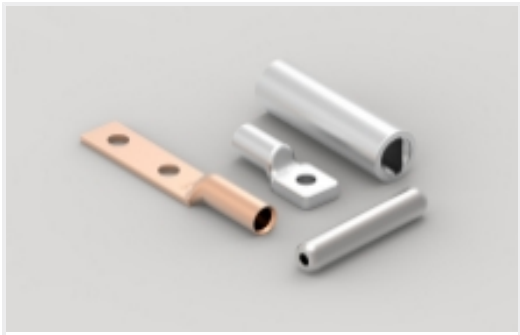
This information is provided based on reasonable inquiry of our suppliers and represents our current actual knowledge based on the information they provided. This information is subject to change. The part numbers that TE has identified as EU RoHS compliant have a maximum concentration of 0.1% by weight in homogenous materials for lead, hexavalent chromium, mercury, PBB, PBDE, DBP, BBP, DEHP, DIBP, and 0.01% for cadmium, or qualify for an exemption to these limits as defined in the Annexes of Directive 2011/65/EU (RoHS2). Finished electrical and electronic equipment products will be CE marked as required by Directive 2011/65/EU. Components may not be CE marked. Additionally, the part numbers that TE has identified as EU ELV compliant have a maximum concentration of 0.1% by weight in homogenous materials for lead, hexavalent chromium, and mercury, and 0.01% for cadmium, or qualify for an exemption to these limits as defined in the Annexes of Directive 2000/53/EC (ELV). Regarding the REACH Regulation, the information TE provides on SVHC in articles for this part number is based on the latest European Chemicals Agency (ECHA) ‘Guidance on requirements for substances in articles’ posted at this URL: <https://echa.europa.eu/guidance-documents/guidance-on-reach>

Compatible Parts

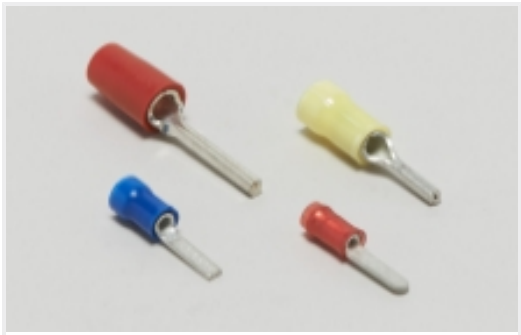
TE Part # 2392021-1 RED BATTERY DAHT KIT 110V (47689-4)	TE Part # 539691-2 ERGO DIE R.B.Y	TE Part # 169404 CERTI-LOK DIE	TE Part # 2063030-1 SDE DIESET, RBY, UL
TE Part # 169400 CERTI-LOK FRAME W/O DIES	TE Part # 59250 T-HEAD PIDG 26-14 ASSY	TE Part # 525690 DAHT PG PIDG 20-18 ASSY	TE Part # 59300 T-HEAD PIDG PG 26-16 ASSY
TE Part # 59824-1 TETRA-CRIMP PIDG PG FASTON 22-10 ASSY	TE Part # 47806-2 DIES PIDG 22-16 DIE SET	TE Part # 2392021-2 RED BATTERY DAHT KIT 220V (47689-4)	TE Part # 47386-4 DAHT PG PIDG 26-16 ASSY
TE Part # 58423-1 DIE, RBY IS9252	TE Part # 47386 DAHT PG PIDG 26-16 ASSY	TE Part # 58433-3 PRO CR ASSY, RBY IS9252	TE Part # 59170 T-HEAD PIDG SH 26-14 ASSY



Also in the Series | **PLASTI-GRIP**



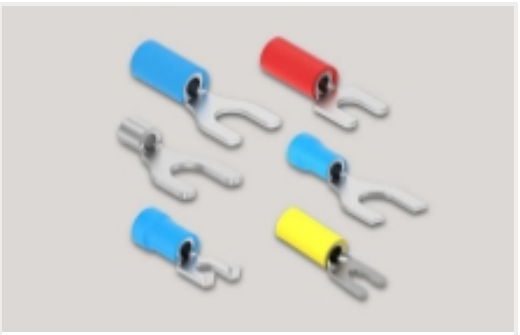
Compression Connectors(3)



Crimp Wire Pins, Tabs & Ferrules(20)



Ring Terminals(310)



Spade Terminals(158)



Splices(45)

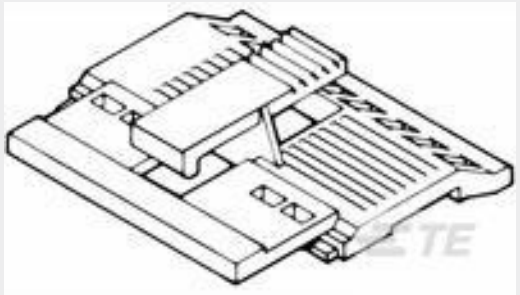
Customers Also Bought



TE Part #2596914002
ZHTM-50/30-0-SP



TE Part #6368120-1
MJ,8POS,2PORT,UNSHLD,CAT 5e



TE Part #102681-5
20 AMPMODU MT COVER DR .100CL



TE Part #1SNA193251R2500
SCH1



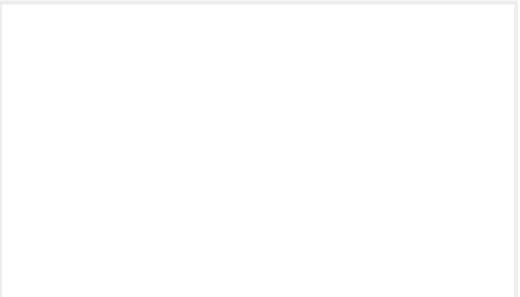
TE Part #34152
PG R 22-16 COMM 22-18 MIL 3/8



TE Part #53644-2
TERMINAL,TERMI-FOIL 12-10



TE Part #130207
PIDG, R, 12-10, M10



TE Part #1SNA193151R1100
FJH32

TE Part #280528-3
REC CONTACT FOR RAILWAYS

TE Part #456073-000
202K185-100/86-0



Documents

Product Drawings

PG R 22-16 COMM 22-18 MIL 5/16

English

CAD Files

Customer View Model

ENG_CVM_CVM_34151_R.2d_dxf.zip

English

3D PDF

3D

Customer View Model

ENG_CVM_CVM_34151_R.3d_igs.zip

English

Customer View Model

ENG_CVM_CVM_34151_R.3d_stp.zip

English

By downloading the CAD file I accept and agree to the [Terms and Conditions](#) of use.

Product Specifications

Application Specification

English

Agency Approvals

UL

English