



Connectors > Automotive Connectors > Automotive Housings > Timer Connector Housing



Number of Positions: 2

Connector & Housing Type: **Housing for Female Terminals**

Mating Tab Width: **2.8 mm [.11 in]**

Connector System: **Wire-to-Wire**

Centerline (Pitch): **5 mm [.197 in]**

[All Timer Connector Housing \(437\)](#)

Features

Product Type Features

Mixed & Hybrid Connector	No
Connector Shape	Rectangular
Connector & Housing Type	Housing for Female Terminals
Connector System	Wire-to-Wire
Sealable	Yes
Primary Locking Feature	On the Terminal
Connector & Contact Terminates To	Wire & Cable

Configuration Features

Number of Positions	2
Number of Rows	1

Electrical Characteristics

Operating Voltage	12 VDC
Nominal Voltage Architecture	12 V, 24 V

Body Features

Cable Exit Angle	180°
Primary Product Color	Black
Connector & Keying Code	Neutral



Contact Features

Contact Size	2.8mm
Contact Type	Receptacle
Mating Tab Width	2.8 mm[.11 in]
Contact Current Rating (Max)	30 A

Mechanical Attachment

Strain Relief	Without
Terminal Position Assurance	No
Mating Alignment Type	Polarization
Mating Alignment	With
Connector Mounting Type	Cable Mount (Free-Hanging)

Housing Features

Housing Material	PA 6.6 GF
Centerline (Pitch)	5 mm[.197 in]

Dimensions

Product Width	32.25 mm[1.27 in]
Product Length	23.4 mm[.921 in]
Connector Height	22 mm[.866 in]

Usage Conditions

Operating Temperature (Max)	130 °C[266 °F]
Operating Temperature Range	-40 – 130 °C[-40 – 266 °F]

Operation/Application

Circuit Application	Power
---------------------	-------

Industry Standards

UL Flammability Rating	UL 94V-2
------------------------	----------

Packaging Features

Packaging Method	Box
------------------	-----

Other

Serviceable	Yes
Connector Position Assurance Capable	No



Product Compliance

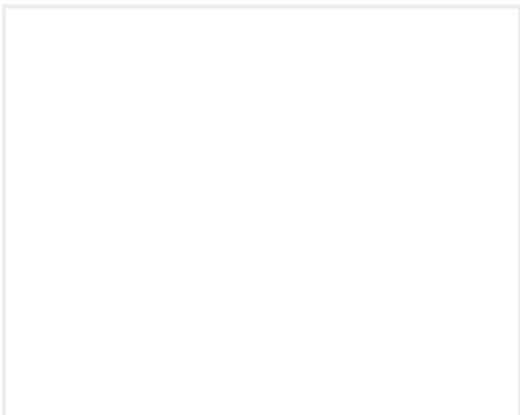
For compliance documentation, visit the product page on TE.com>

EU RoHS Directive 2011/65/EU	Compliant
EU ELV Directive 2000/53/EC	Compliant
China RoHS 2 Directive MIIT Order No 32, 2016	No Restricted Materials Above Threshold
EU REACH Regulation (EC) No. 1907/2006	Current ECHA Candidate List: JAN 2025 (247) Candidate List Declared Against: JAN 2025 (247) Does not contain REACH SVHC
Halogen Content	BFR/CFR/PVC Free, but Br/Cl >900 ppm in other sources.
Solder Process Capability	Not applicable for solder process capability

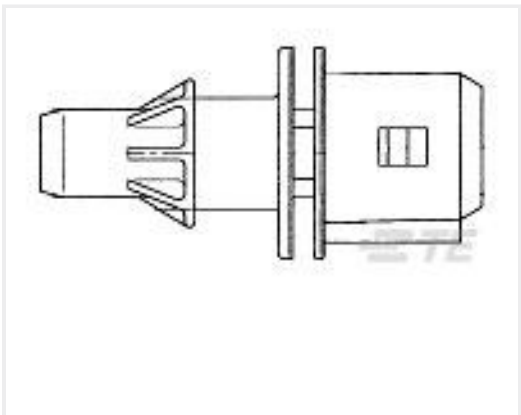
Product Compliance Disclaimer

This information is provided based on reasonable inquiry of our suppliers and represents our current actual knowledge based on the information they provided. This information is subject to change. The part numbers that TE has identified as EU RoHS compliant have a maximum concentration of 0.1% by weight in homogenous materials for lead, hexavalent chromium, mercury, PBB, PBDE, DBP, BBP, DEHP, DIBP, and 0.01% for cadmium, or qualify for an exemption to these limits as defined in the Annexes of Directive 2011/65/EU (RoHS2). Finished electrical and electronic equipment products will be CE marked as required by Directive 2011/65/EU. Components may not be CE marked. Additionally, the part numbers that TE has identified as EU ELV compliant have a maximum concentration of 0.1% by weight in homogenous materials for lead, hexavalent chromium, and mercury, and 0.01% for cadmium, or qualify for an exemption to these limits as defined in the Annexes of Directive 2000/53/EC (ELV). Regarding the REACH Regulation, the information TE provides on SVHC in articles for this part number is based on the latest European Chemicals Agency (ECHA) 'Guidance on requirements for substances in articles' posted at this URL: <https://echa.europa.eu/guidance-documents/guidance-on-reach>

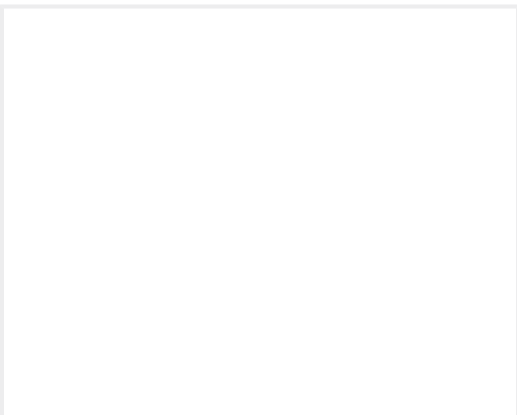
Compatible Parts



TE Part # 347688-1
SILICONE SEAL

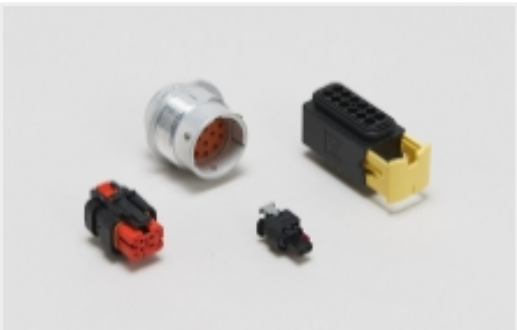


TE Part # 106462-1
2P.FASTIN-ON HSG.

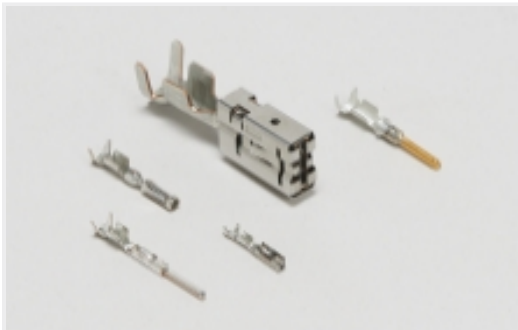


TE Part # 346304-3
2 WAY JUN. TMR. HSG BLACKBLACK

Also in the Series | Junior Timer



Automotive Housings(38)



Automotive Terminals(13)

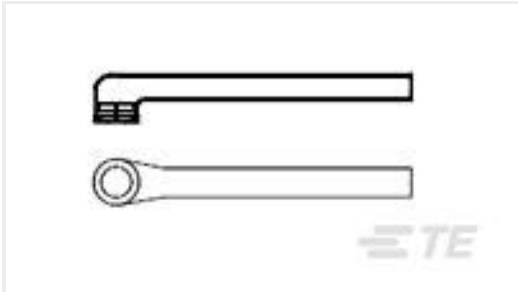


Busbars & Terminals(1)

Customers Also Bought



TE Part #1719667-1
COVER MQS CB 90



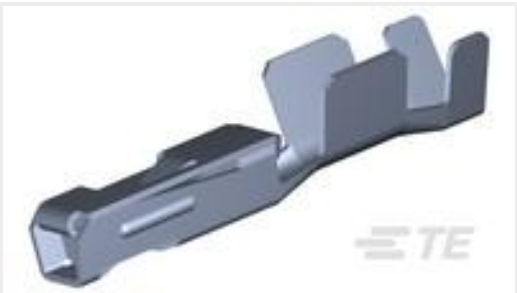
TE Part #234461-000
222D132-25/225-0



TE Part #CP9851-000
204W201-25/225-0



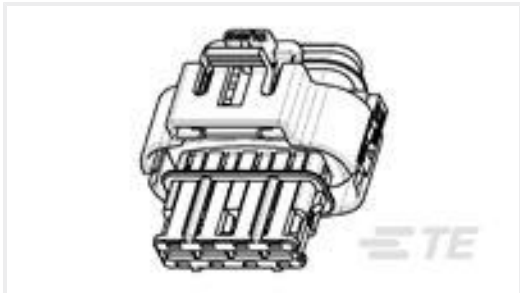
TE Part #347874-1
CABLE SEAL LC SILICON 0.5 T



TE Part #638652-1
RECEPT,1.5MM,TIN 14-16AWG RD=1



TE Part #9-1719675-9
32POS MIXED MQS REC SEALED
COD 1



TE Part #1480968-1
ASSY 4 POSN. 2,8MM REC.



TE Part #5-146254-1
02 MODII HDR DRST B/A .100CL



TE Part #DRC26-50S01
PLG, 50P, BLK, N, 01



TE Part #1456554-1
SSC 2x2 PLUG ASSY ALL OPEN
MASTER KEY

Documents

Product Drawings
2 WAY JUNIOR TIMER CONN.

English

CAD Files
Customer View Model
ENG_CVM_347887-3_O.3d_igs.zip

English

Customer View Model



[ENG_CVM_347887-3_O.3d_stp.zip](#)

English

Customer View Model

[ENG_CVM_347887-3_O.2d_dxf.zip](#)

English

3D PDF

English

By downloading the CAD file I accept and agree to the [Terms and Conditions](#) of use.

Datasheets & Catalog Pages

2 WAY JUNIOR POWER TIMER CONNECTOR (ASSY. WITH GB. SILICONE SEAL)

English