

Product Compliance

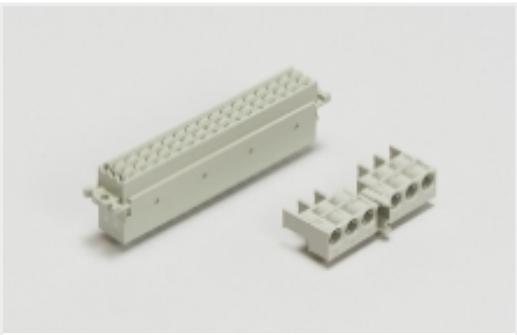
[For compliance documentation, visit the product page on TE.com>](#)

EU RoHS Directive 2011/65/EU	Compliant
EU ELV Directive 2000/53/EC	Compliant
China RoHS 2 Directive MIIT Order No 32, 2016	No Restricted Materials Above Threshold
EU REACH Regulation (EC) No. 1907/2006	Current ECHA Candidate List: JAN 2025 (247) Candidate List Declared Against: JAN 2018 (181) SVHC > Threshold: Not Yet Reviewed
Halogen Content	Not Low Halogen - contains Br or Cl > 900 ppm.
Solder Process Capability	Not applicable for solder process capability

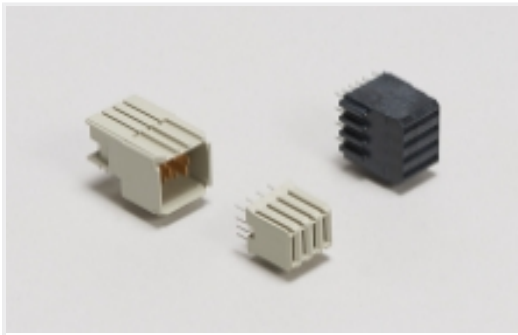
Product Compliance Disclaimer

This information is provided based on reasonable inquiry of our suppliers and represents our current actual knowledge based on the information they provided. This information is subject to change. The part numbers that TE has identified as EU RoHS compliant have a maximum concentration of 0.1% by weight in homogenous materials for lead, hexavalent chromium, mercury, PBB, PBDE, DBP, BBP, DEHP, DIBP, and 0.01% for cadmium, or qualify for an exemption to these limits as defined in the Annexes of Directive 2011/65/EU (RoHS2). Finished electrical and electronic equipment products will be CE marked as required by Directive 2011/65/EU. Components may not be CE marked. Additionally, the part numbers that TE has identified as EU ELV compliant have a maximum concentration of 0.1% by weight in homogenous materials for lead, hexavalent chromium, and mercury, and 0.01% for cadmium, or qualify for an exemption to these limits as defined in the Annexes of Directive 2000/53/EC (ELV). Regarding the REACH Regulations, TE's information on SVHC in articles for this part number is still based on the European Chemical Agency (ECHA) 'Guidance on requirements for substances in articles'(Version: 2, April 2011), applying the 0.1% weight on weight concentration threshold at the finished product level. TE is aware of the European Court of Justice ruling of September 10th, 2015 also known as O5A (Once An Article Always An Article) stating that, in case of 'complex object', the threshold for a SVHC must be applied to both the product as a whole and simultaneously to each of the articles forming part of its composition. TE has evaluated this ruling based on the new ECHA "Guidance on requirements for substances in articles" (June 2017, version 4.0) and will be updating its statements accordingly.

Also in the Series | [Z-PACK 2mm HM](#)



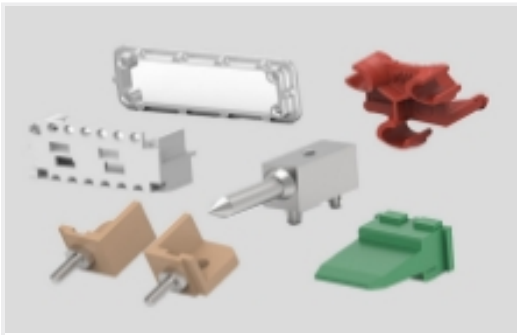
Backplane Connector Housings(4)



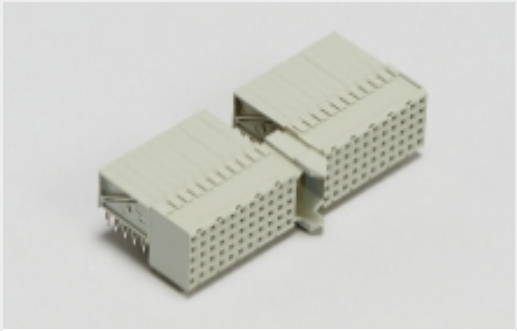
Backplane Power Connectors(1)



Connector Caps & Covers(62)



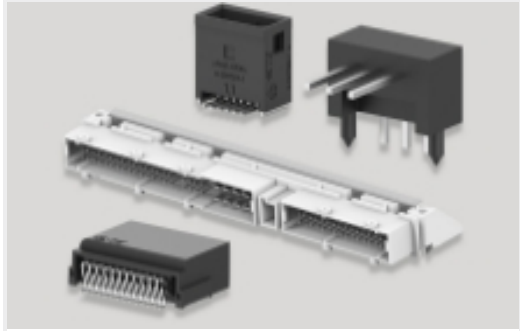
Connector Hardware(91)



Hard Metric Backplane Connectors (266)



Insertion & Extraction Tools(2)

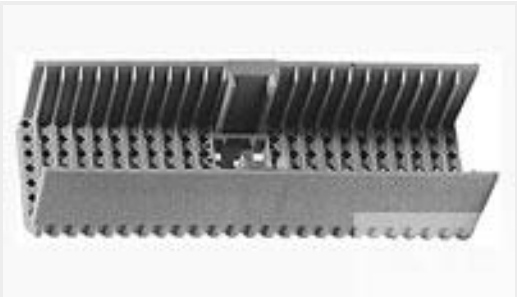


PCB Headers & Receptacles(46)

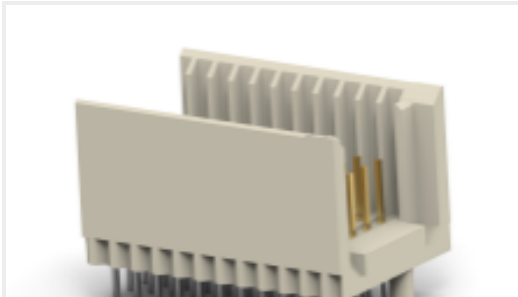


Rectangular Power Connectors(46)

Customers Also Bought



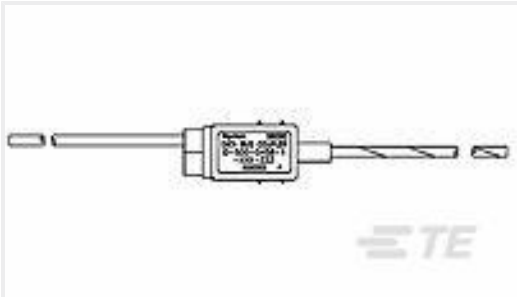
TE Part #646483-5
2MM H.M.,A/B 19 SHROUD 4.5MM



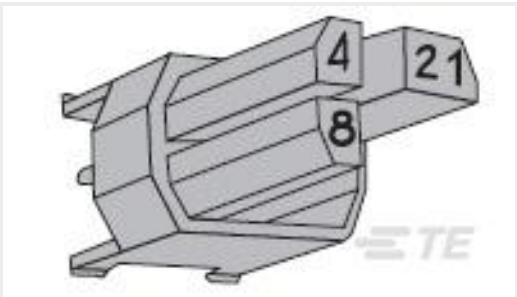
TE Part #CAT-472-Z12
Hard Metric Male Connector:
Traditional Backplane, Mezzanine,
2mm



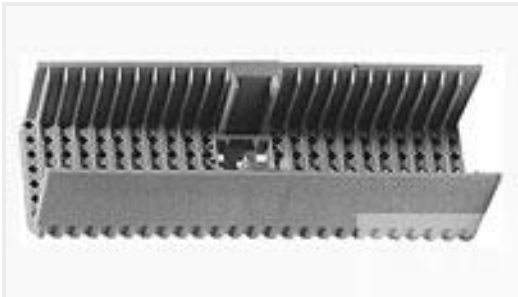
TE Part #5188578-1
Z-PACK/A M HDR.154P



TE Part #963767-000
D-500-0458-1-613-078



TE Part #100525-3
Z-PACK M.CODING KEY



TE Part #646478-5
2MM H.M., "A" SHROUD, 4.5MM



TE Part #5-147121-1
10 50/50 HDR DRST SMT.250 SN



TE Part #5414946-2
PLUG, CBL, STR, SMB, PB FREE



TE Part #3-829587-0
2X30P MOD2 STIFTLEI

Documents



CAD Files

3D PDF

3D

Customer View Model

[ENG_CVM_CVM_352129-5_A.2d_dxf.zip](#)

English

Customer View Model

[ENG_CVM_CVM_352129-5_A.3d_igs.zip](#)

English

Customer View Model

[ENG_CVM_CVM_352129-5_A.3d_stp.zip](#)

English

By downloading the CAD file I accept and agree to the [Terms and Conditions](#) of use.