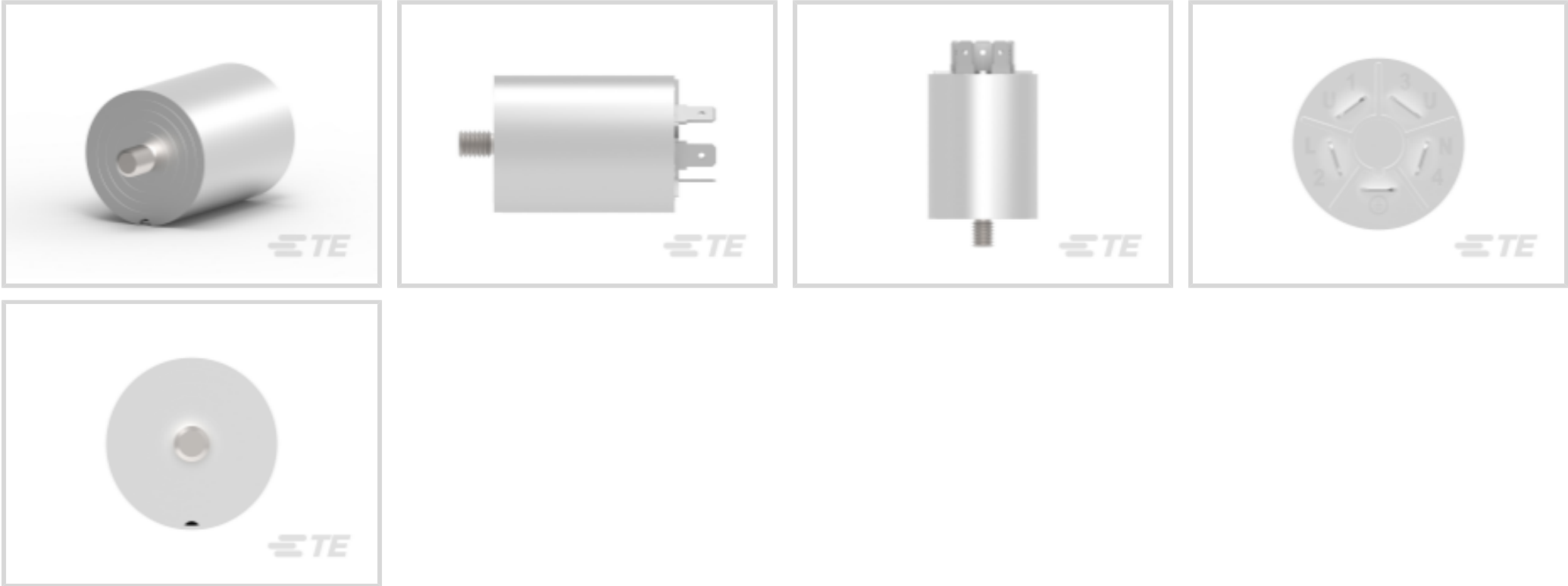




EMI & EMC Solutions > EMI Filters > Power Line Filters > Single Phase Filters > Single Phase Filters, Corcom WG Series



Current Rating: **16 A**

Input Termination Type: **FASTON**

Output Termination Type: **.250" FASTON**

Leakage Current (Max) (120VAC, 60Hz): **.76 mA**

Leakage Current (Max) (250VAC, 50Hz): **1.27 mA**

[All Single Phase Filters, Corcom WG Series \(9\)](#)

Features

Product Type Features

Filtering Requirements	Filtered
Ground Choke Option	No
Input Termination Type	FASTON
Output Termination Type	.250" FASTON

Electrical Characteristics

Current Rating	16 A
Leakage Current (Max) (120VAC, 60Hz)	.76 mA
Leakage Current (Max) (250VAC, 50Hz)	1.27 mA
Operating Voltage	250 VAC

Mechanical Attachment

Product Mount Type	Panel Mount
--------------------	-------------

Usage Conditions

Operating Temperature Range	-10 – 40 °C
-----------------------------	-------------



Product Compliance

For compliance documentation, visit the product page on TE.com>

EU RoHS Directive 2011/65/EU	Compliant
EU ELV Directive 2000/53/EC	Compliant
China RoHS 2 Directive MIIT Order No 32, 2016	No Restricted Materials Above Threshold
EU REACH Regulation (EC) No. 1907/2006	Current ECHA Candidate List: JAN 2025 (247) Candidate List Declared Against: JAN 2025 (247) Does not contain REACH SVHC
Halogen Content	Not Low Halogen - contains Br or Cl > 900 ppm.
Solder Process Capability	Not applicable for solder process capability

Product Compliance Disclaimer

This information is provided based on reasonable inquiry of our suppliers and represents our current actual knowledge based on the information they provided. This information is subject to change. The part numbers that TE has identified as EU RoHS compliant have a maximum concentration of 0.1% by weight in homogenous materials for lead, hexavalent chromium, mercury, PBB, PBDE, DBP, BBP, DEHP, DIBP, and 0.01% for cadmium, or qualify for an exemption to these limits as defined in the Annexes of Directive 2011/65/EU (RoHS2). Finished electrical and electronic equipment products will be CE marked as required by Directive 2011/65/EU. Components may not be CE marked. Additionally, the part numbers that TE has identified as EU ELV compliant have a maximum concentration of 0.1% by weight in homogenous materials for lead, hexavalent chromium, and mercury, and 0.01% for cadmium, or qualify for an exemption to these limits as defined in the Annexes of Directive 2000/53/EC (ELV). Regarding the REACH Regulation, the information TE provides on SVHC in articles for this part number is based on the latest European Chemicals Agency (ECHA) 'Guidance on requirements for substances in articles' posted at this URL: <https://echa.europa.eu/guidance-documents/guidance-on-reach>

Compatible Parts



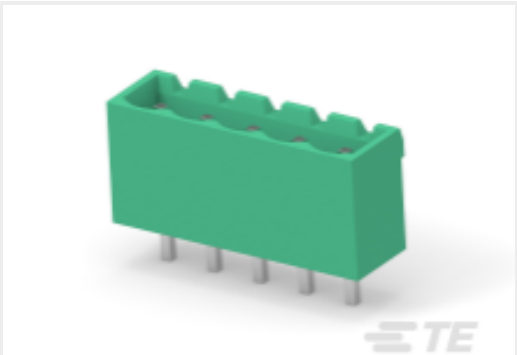
TE Part # CAT-C8114-W549
[Single Phase Filters, Corcom WG Series](#)

Also in the Series | Corcom WG



Single Phase Filters(9)

Customers Also Bought



TE Part #2351885-5
5POS TB HDR 180 DEG, PITCH 5.0&TL
4.5mm



TE Part #3-338309-2
9POS.HD20 PLUG ASSY

Documents

Product Drawings

16WGC1=F4338B

English

CAD Files

Customer View Model

ENG_CVM_CVM_4-6609089-1_E1.3d_igs.zip

English

Customer View Model

ENG_CVM_CVM_4-6609089-1_E1.3d_stp.zip

English

Customer View Model

ENG_CVM_CVM_4-6609089-1_E1.2d_dxf.zip

English

3D PDF

3D

By downloading the CAD file I accept and agree to the [Terms and Conditions](#) of use.

Datasheets & Catalog Pages

1654001_CORCOM_PRODUCT_GUIDE_WG_SERIES

English

Corcom Combined Selector Charts

English

1-1654250-1_CORCOM_EMI_RFI_QRG

English

4-6609089-1

16 A, FASTON Input, .250" FASTON Output, 250 VAC, Corcom WG, Single Phase
Filters

