

4515-DS5A002DP

✓ ACTIVE

MEAS | MEAS MS4515

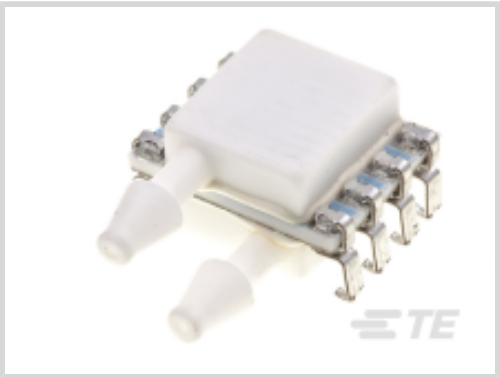
TE Internal #: 4515-DS5A002DP

Analog Pressure Sensor Modules, Differential, 2 inH2O, 300 psi, 10  
- 90% Vdc, ±0.25% Span Pressure Accuracy, 5 V Supply Voltage  
Range, MEAS MS4515

[View on TE.com >](#)



Sensors > Pressure Sensors > Board Mount Pressure Sensors > PCB-Mounted Analog Pressure Sensor



Pressure Sensor Type: **Analog Pressure Sensor Modules**

Pressure Type: **Differential**

Pressure: **[ 2 inH2O ]**

Output Signal Type: **10 - 90% Vdc**

Pressure Accuracy: **±0.25% Span**

[All PCB-Mounted Analog Pressure Sensor \(0\)](#)

Features

Product Type Features

|                      |                                |
|----------------------|--------------------------------|
| Sensor Package       | 8 pin DIL                      |
| Pressure Sensor Type | Analog Pressure Sensor Modules |
| Pressure Type        | Differential                   |

Electrical Characteristics

|                      |     |
|----------------------|-----|
| Supply Voltage Range | 5 V |
|----------------------|-----|

Dimensions

|                |                  |
|----------------|------------------|
| Product Width  | 17.4 mm[.685 in] |
| Product Length | 12.7 mm[.5 in]   |
| Product Height | 7.2 mm[.283 in]  |

Usage Conditions

|                             |                          |
|-----------------------------|--------------------------|
| Operating Temperature Range | -10 – 85 °C[14 – 185 °F] |
|-----------------------------|--------------------------|

Operation/Application

|                    |              |
|--------------------|--------------|
|                    | 2 inH2O      |
| Output Signal Type | 10 - 90% Vdc |
| Pressure Accuracy  | ±0.25% Span  |



Other

|                |           |
|----------------|-----------|
| Sensor Options | No Option |
|----------------|-----------|

Product Compliance

For compliance documentation, visit the product page on TE.com>

|   |  |
|---|--|
| EU RoHS Directive 2011/65/EU                  | Compliant  |
| EU ELV Directive 2000/53/EC                   | Compliant  |
| China RoHS 2 Directive MIIT Order No 32, 2016 | No Restricted Materials Above Threshold  |
| EU REACH Regulation (EC) No. 1907/2006        | Current ECHA Candidate List: JAN 2025 (247)<br>Candidate List Declared Against: JUNE 2024 (241)<br>Does not contain REACH SVHC |
| Halogen Content                               | Not Yet Reviewed for halogen content   |
| Solder Process Capability                     | Not reviewed for solder process capability   |

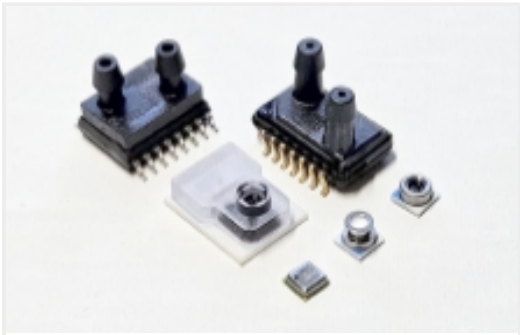
Product Compliance Disclaimer

This information is provided based on reasonable inquiry of our suppliers and represents our current actual knowledge based on the information they provided. This information is subject to change. The part numbers that TE has identified as EU RoHS compliant have a maximum concentration of 0.1% by weight in homogenous materials for lead, hexavalent chromium, mercury, PBB, PBDE, DBP, BBP, DEHP, DIBP, and 0.01% for cadmium, or qualify for an exemption to these limits as defined in the Annexes of Directive 2011/65/EU (RoHS2). Finished electrical and electronic equipment products will be CE marked as required by Directive 2011/65/EU. Components may not be CE marked. Additionally, the part numbers that TE has identified as EU ELV compliant have a maximum concentration of 0.1% by weight in homogenous materials for lead, hexavalent chromium, and mercury, and 0.01% for cadmium, or qualify for an exemption to these limits as defined in the Annexes of Directive 2000/53/EC (ELV). Regarding the REACH Regulation, the information TE provides on SVHC in articles for this part number is based on the latest European Chemicals Agency (ECHA) 'Guidance on requirements for substances in articles' posted at this URL: <https://echa.europa.eu/guidance-documents/guidance-on-reach>

Compatible Parts



Also in the Series | MEAS MS4515



Board Mount Pressure Sensors(19)

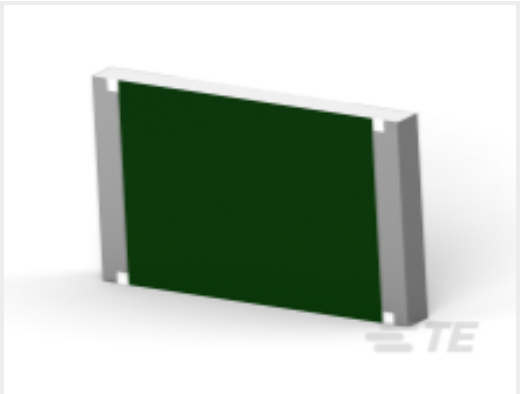
Customers Also Bought



TE Part #1676480-3  
CRG0402 1% 10K



TE Part #1-2176337-6  
CRGCQ 0402 180R 1%



TE Part #5-2176406-1  
3560 120R 1%



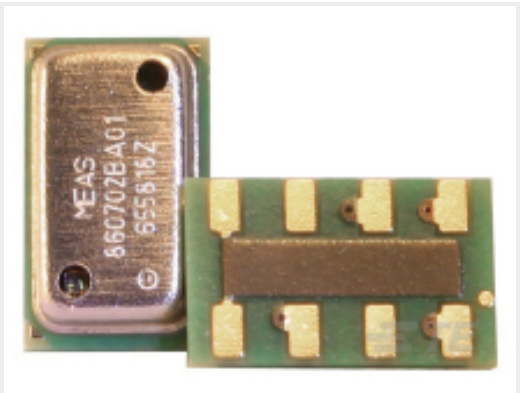
TE Part #3-1393789-7  
V23079A2003B301



TE Part #1827625-1  
SHIELD FINGER 3014 ANTI OVER STRESS TYPE



TE Part #ANT-418-CW-HWR-SMA  
Antenna 1/4 Wave Whip Swivel 418MHz SMA



TE Part #MS860702BA01-50  
PTH COMBINATION DIGITAL SENSOR



TE Part #1879061-3  
CPF 0402 10R 0.1% 25PPM 5K RL



TE Part #1879216-3  
CPF 0402 52K3 0.1% 25PPM 1K RL



TE Part #1483354-2  
MICRO-MATCH LEAD 12P 150MM

Documents

CAD Files

3D PDF

3D

Customer View Model

ENG\_CVM\_CVM\_4515-DS5A002DP\_C.2d\_dxf.zip

English

Customer View Model

ENG\_CVM\_CVM\_4515-DS5A002DP\_C.3d\_igs.zip



English

Customer View Model

[ENG\\_CVM\\_CVM\\_4515-DS5A002DP\\_C.3d\\_stp.zip](#)

English

By downloading the CAD file I accept and agree to the [Terms and Conditions](#) of use.

Datasheets & Catalog Pages

[Data sheet](#)

English