

4525-SS5A100GP

✓ ACTIVE

MEAS | MEAS MS4525

TE Internal #: 4525-SS5A100GP

Analog Pressure Sensor Modules, Gauge, 100 psi, 10 - 90% Vdc, ±0.

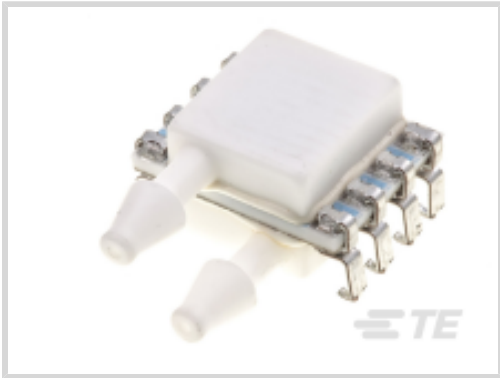
25% Span Pressure Accuracy, 5 V Supply Voltage Range, MEAS

MS4525

[View on TE.com >](#)



Sensors > Pressure Sensors > Board Mount Pressure Sensors > PCB MOUNTED ANALOG PRESSURE SENSOR



Pressure Sensor Type: **Analog Pressure Sensor Modules**

Pressure Type: **Gauge**

Proof Pressure Range: **300 psi**

Output Signal Type: **10 - 90% Vdc**

Pressure Accuracy: **±0.25% Span**

[All PCB MOUNTED ANALOG PRESSURE SENSOR \(0\)](#)

Features

Product Type Features

Leg Style	Through Hole
Sensor Package	8 pin DIL
Pressure Sensor Type	Analog Pressure Sensor Modules
Pressure Type	Gauge

Electrical Characteristics

Supply Voltage Range	5 V
----------------------	-----

Dimensions

Product Width	17.4 mm[.685 in]
Product Length	12.7 mm[.5 in]
Product Height	11.7 mm[.46 in]

Usage Conditions

Operating Temperature Range	-25 – 105 °C[-13 – 221 °F]
-----------------------------	----------------------------

Operation/Application

Proof Pressure Range	300 psi
Output Signal Type	10 - 90% Vdc



Pressure Accuracy	±0.25% Span
-------------------	-------------

Packaging Features

Sensor Port Configuration	Single Sideport
---------------------------	-----------------

Other

Sensor Options	No Option
----------------	-----------

Product Compliance

For compliance documentation, visit the product page on TE.com>

EU RoHS Directive 2011/65/EU	Compliant
EU ELV Directive 2000/53/EC	Compliant
China RoHS 2 Directive MIIT Order No 32, 2016	No Restricted Materials Above Threshold
EU REACH Regulation (EC) No. 1907/2006	Current ECHA Candidate List: JAN 2025 (247) Candidate List Declared Against: JUNE 2024 (241) Does not contain REACH SVHC
Halogen Content	Not Yet Reviewed for halogen content
Solder Process Capability	Not reviewed for solder process capability

Product Compliance Disclaimer

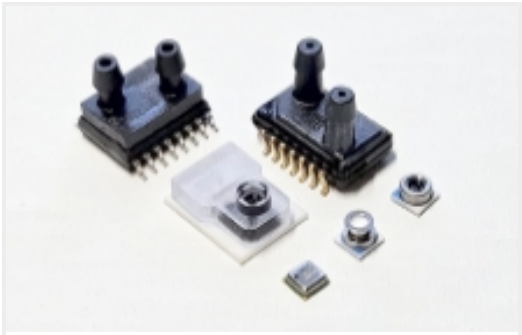
This information is provided based on reasonable inquiry of our suppliers and represents our current actual knowledge based on the information they provided. This information is subject to change. The part numbers that TE has identified as EU RoHS compliant have a maximum concentration of 0.1% by weight in homogenous materials for lead, hexavalent chromium, mercury, PBB, PBDE, DBP, BBP, DEHP, DIBP, and 0.01% for cadmium, or qualify for an exemption to these limits as defined in the Annexes of Directive 2011/65/EU (RoHS2). Finished electrical and electronic equipment products will be CE marked as required by Directive 2011/65/EU. Components may not be CE marked. Additionally, the part numbers that TE has identified as EU ELV compliant have a maximum concentration of 0.1% by weight in homogenous materials for lead, hexavalent chromium, and mercury, and 0.01% for cadmium, or qualify for an exemption to these limits as defined in the Annexes of Directive 2000/53/EC (ELV). Regarding the REACH Regulation, the information TE provides on SVHC in articles for this part number is based on the latest European Chemicals Agency (ECHA) 'Guidance on requirements for substances in articles' posted at this URL: <https://echa.europa.eu/guidance-documents/guidance-on-reach>

Compatible Parts





Also in the Series | [MEAS MS4525](#)



[Board Mount Pressure Sensors\(40\)](#)

Customers Also Bought



TE Part #1879334-1
[CPF 0603 2R0 1% 50PPM 1K RL](#)



TE Part #2-1879334-2
[CPF 0603 3R32 1% 50PPM 1K RL](#)



TE Part #1879334-5
[CPF 0603 2R21 1% 50PPM 1K RL](#)



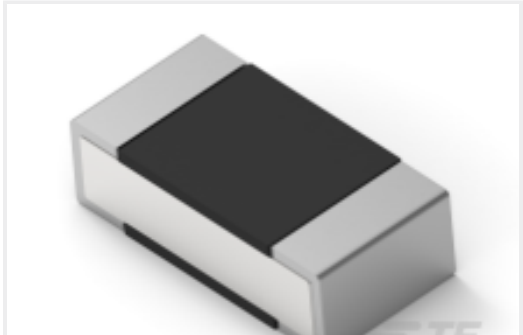
TE Part #3-2176310-5
[RP 1E 0.1W 243R 0.1% 25PPM 1K RL](#)



TE Part #CONBNC001
[BNC Jack 50 Ohm PCB Through Hole](#)



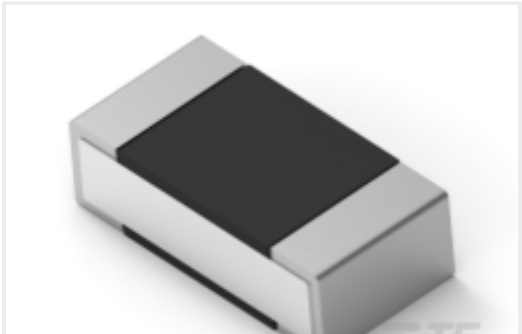
TE Part #1757822-8
[AMPLIMITE,ASY,RCPT,FB,109,ZN,3,CONT](#)



TE Part #6-2176312-3
[RP 1E 0.1W 54K9 0.1% 25PPM 1K RL](#)



TE Part #1757819-8
[AMPLIMITE,ASY,PLUG,STD,109,ZN,3,CT](#)



TE Part #4-2176311-1
[RP 1E 0.1W 3K01 0.1% 25PPM 1K RL](#)



TE Part #3-1879334-0
[CPF 0603 4R02 1% 50PPM 1K RL](#)

Documents

[CAD Files](#)

Customer View Model

[ENG_CVM_CVM_4525-SS5A100GP_C.3d_stp.zip](#)

English

Customer View Model

[ENG_CVM_CVM_4525-SS5A100GP_C.2d_dxf.zip](#)

English



Customer View Model

[ENG_CVM_CVM_4525-SS5A100GP_C.3d_igs.zip](#)

English

[3D PDF](#)

3D

By downloading the CAD file I accept and agree to the [Terms and Conditions](#) of use.

Datasheets & Catalog Pages

[Data sheet](#)

English