

4525DO-SS5AI100GP

✓ ACTIVE

MEAS | MEAS MS4525DO

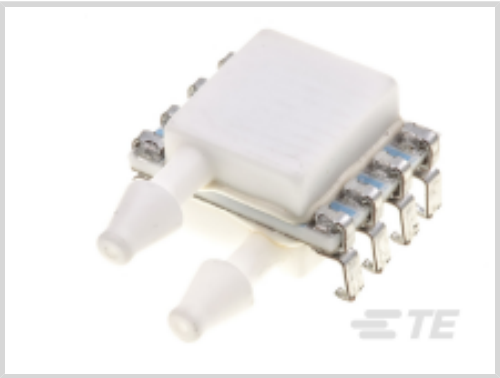
TE Internal #: 4525DO-SS5AI100GP

Digital Pressure and Altimeter Sensor Modules, Gauge, 100 psi, 14 bit ADC, ±0.25% Span Pressure Accuracy, 5 V Supply Voltage Range, MEAS MS4525DO

[View on TE.com >](#)



Sensors > Pressure Sensors > Board Mount Pressure Sensors > PCB MOUNTED DIGITAL PRESSURE SENSOR



Pressure Sensor Type: Digital Pressure and Altimeter Sensor Modules

Pressure Type: Gauge

Proof Pressure Range: 300 psi

Output Signal Type: 14 bit ADC

Pressure Accuracy: ±0.25% Span

[All PCB MOUNTED DIGITAL PRESSURE SENSOR \(0\)](#)

Features

Product Type Features

Leg Style	Through Hole
Pressure Sensor Type	Digital Pressure and Altimeter Sensor Modules
Pressure Type	Gauge

Electrical Characteristics

Supply Current	3 mA
Supply Voltage Range	5 V

Dimensions

Product Width	17.4 mm[.685 in]
Product Length	12.7 mm[.5 in]
Product Height	11.7 mm[.46 in]

Usage Conditions

Operating Temperature Range	-25 – 105 °C[-13 – 221 °F]
-----------------------------	----------------------------

Operation/Application

Output Interface	I²C or SPI
Proof Pressure Range	300 psi



Output Signal Type	14 bit ADC
Pressure Accuracy	±0.25% Span

Packaging Features

Sensor Port Configuration	Single Sideport
---------------------------	-----------------

Other

Sensor Options	No Option
----------------	-----------

Product Compliance

For compliance documentation, visit the product page on TE.com>

EU RoHS Directive 2011/65/EU	Compliant
EU ELV Directive 2000/53/EC	Compliant
China RoHS 2 Directive MIIT Order No 32, 2016	No Restricted Materials Above Threshold
EU REACH Regulation (EC) No. 1907/2006	Current ECHA Candidate List: JAN 2025 (247) Candidate List Declared Against: JAN 2024 (240) Does not contain REACH SVHC
Halogen Content	Not Yet Reviewed for halogen content
Solder Process Capability	Not reviewed for solder process capability

Product Compliance Disclaimer

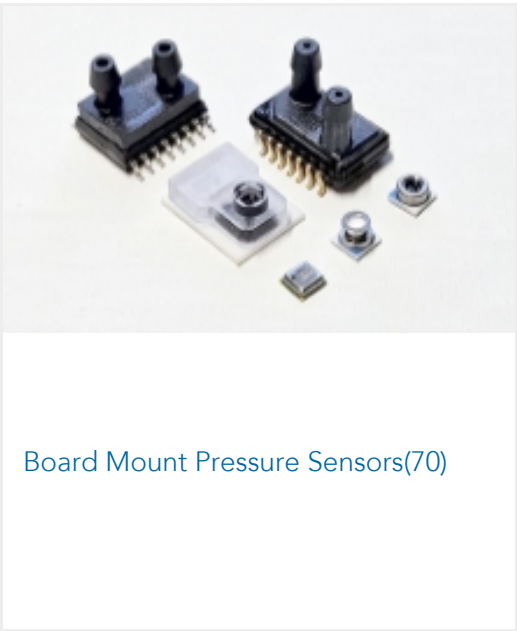
This information is provided based on reasonable inquiry of our suppliers and represents our current actual knowledge based on the information they provided. This information is subject to change. The part numbers that TE has identified as EU RoHS compliant have a maximum concentration of 0.1% by weight in homogenous materials for lead, hexavalent chromium, mercury, PBB, PBDE, DBP, BBP, DEHP, DIBP, and 0.01% for cadmium, or qualify for an exemption to these limits as defined in the Annexes of Directive 2011/65/EU (RoHS2). Finished electrical and electronic equipment products will be CE marked as required by Directive 2011/65/EU. Components may not be CE marked. Additionally, the part numbers that TE has identified as EU ELV compliant have a maximum concentration of 0.1% by weight in homogenous materials for lead, hexavalent chromium, and mercury, and 0.01% for cadmium, or qualify for an exemption to these limits as defined in the Annexes of Directive 2000/53/EC (ELV). Regarding the REACH Regulation, the information TE provides on SVHC in articles for this part number is based on the latest European Chemicals Agency (ECHA) 'Guidance on requirements for substances in articles' posted at this URL: <https://echa.europa.eu/guidance-documents/guidance-on-reach>

Compatible Parts

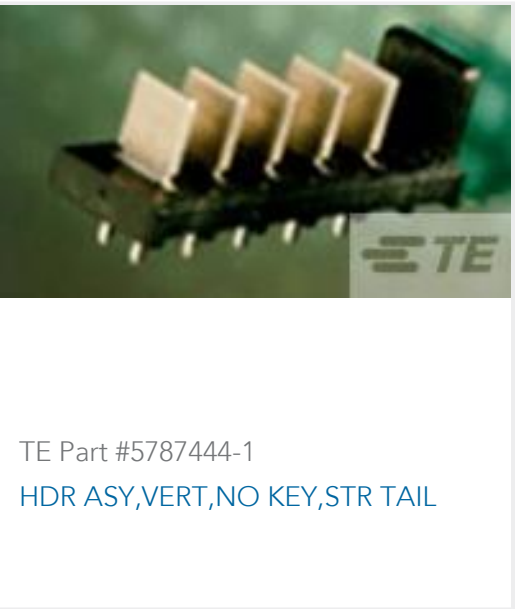


Also in the Series

MEAS MS4525DO



Customers Also Bought





Documents

CAD Files

Customer View Model

[ENG\\_CVM\\_CVM\\_4525DO-SS5AI100GP\\_D.3d\\_stp.zip](#)

English

Customer View Model

[ENG\\_CVM\\_CVM\\_4525DO-SS5AI100GP\\_D.2d\\_dxf.zip](#)

English

Customer View Model

[ENG\\_CVM\\_CVM\\_4525DO-SS5AI100GP\\_D.3d\\_igs.zip](#)

English

3D PDF

3D

By downloading the CAD file I accept and agree to the [Terms and Conditions](#) of use.

Datasheets & Catalog Pages

Data sheet

English

Product Specifications

[MS45xx Series Surface Models](#)

English