



Connectors > Automotive Connectors > Data Connectivity Systems > Data Connectivity Headers



Connector System: **Cable-to-Board**

Sealable: **No**

Shielded: **No**

PCB Mount Orientation: **Vertical**

Number of Positions: **1**

Features

Product Type Features

Connector & Contact Terminates To	Printed Circuit Board
Mixed & Hybrid Connector	No
Connector System	Cable-to-Board
Sealable	No

Configuration Features

PCB Mount Orientation	Vertical
Number of Positions	1

Electrical Characteristics

Operating Voltage	800 VAC
Impedance	50 Ω

Signal Characteristics

Operating Frequency Range	0 – 6000 MHz
---------------------------	--------------

Body Features

PCB Retention Feature Plating Material	Tin
Body Material	Glass Filled Nylon, Zinc
Connector & Keying Code	G

Contact Features

Outer Contact Plating Material	Tin (Sn)
--------------------------------	----------



RF Connector Center Contact Plating Material	Gold (Au)
Contact Mating Area Plating Material	Gold (Au)
Center Contact	With
Contact Type	Pin
Mating Pin Diameter	.5 mm[.02 in]
Contact Current Rating (Max)	1 A

Termination Features

Termination Method to PCB	Through Hole - Solder
---------------------------	-----------------------

Mechanical Attachment

PCB Mount Retention	Without
Mating Retention	With
Connector Mounting Type	Board Mount

Housing Features

Housing Color	Gray
---------------	------

Dimensions

Product Width	7.5 mm[.295 in]
Product Length	13.8 mm[.543 in]
Connector Height	11.45 mm[.45 in]

Usage Conditions

Operating Temperature (Max)	65 °C, 70 °C, 75 °C, 80 °C, 85 °C, 90 °C, 100 °C, 105 °C[221 °F]
Operating Temperature Range	-40 – 105 °C[-40 – 221 °F]

Operation/Application

Solder Process	Reflow Solder Capable
Shielded	No
Circuit Application	Signal

Packaging Features

Packaging Quantity	300
Packaging Method	Reel

Other

Dielectric Material	PCT
---------------------	-----



Product Compliance

For compliance documentation, visit the product page on TE.com>

EU RoHS Directive 2011/65/EU	Compliant
EU ELV Directive 2000/53/EC	Compliant
China RoHS 2 Directive MIIT Order No 32, 2016	No Restricted Materials Above Threshold
EU REACH Regulation (EC) No. 1907/2006	Current ECHA Candidate List: JAN 2025 (247) Not Yet Reviewed
Halogen Content	Low Halogen - Br, Cl, F, I < 900 ppm per homogenous material. Also BFR/CFR/PVC Free
Solder Process Capability	Not reviewed for solder process capability

Product Compliance Disclaimer

This information is provided based on reasonable inquiry of our suppliers and represents our current actual knowledge based on the information they provided. This information is subject to change. The part numbers that TE has identified as EU RoHS compliant have a maximum concentration of 0.1% by weight in homogenous materials for lead, hexavalent chromium, mercury, PBB, PBDE, DBP, BBP, DEHP, DIBP, and 0.01% for cadmium, or qualify for an exemption to these limits as defined in the Annexes of Directive 2011/65/EU (RoHS2). Finished electrical and electronic equipment products will be CE marked as required by Directive 2011/65/EU. Components may not be CE marked. Additionally, the part numbers that TE has identified as EU ELV compliant have a maximum concentration of 0.1% by weight in homogenous materials for lead, hexavalent chromium, and mercury, and 0.01% for cadmium, or qualify for an exemption to these limits as defined in the Annexes of Directive 2000/53/EC (ELV). Regarding the REACH Regulations, TE’s information on SVHC in articles for this part number is still based on the European Chemical Agency (ECHA) ‘Guidance on requirements for substances in articles’(Version: 2, April 2011), applying the 0.1% weight on weight concentration threshold at the finished product level. TE is aware of the European Court of Justice ruling of September 10th, 2015 also known as O5A (Once An Article Always An Article) stating that, in case of ‘complex object’, the threshold for a SVHC must be applied to both the product as a whole and simultaneously to each of the articles forming part of its composition. TE has evaluated this ruling based on the new ECHA “Guidance on requirements for substances in articles” (June 2017, version 4.0) and will be updating its statements accordingly.

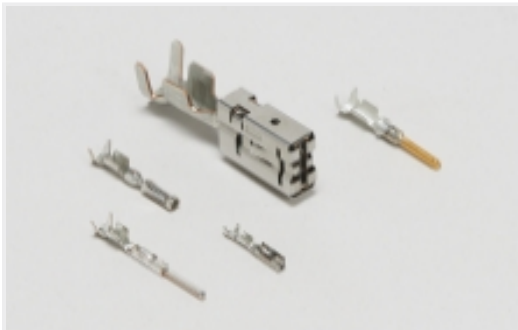
Compatible Parts



Also in the Series | FAKRA RF Connector System



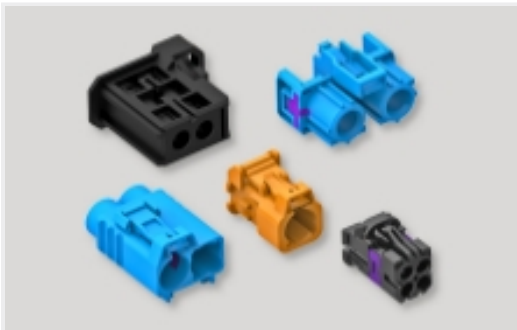
Automotive Connector Caps & Covers (2)



Automotive Terminals(28)



Connector Contacts(1)



Data Connectivity Housings(398)



Power Contacts(1)

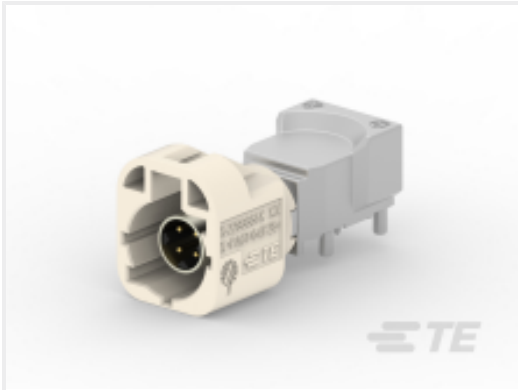


RF Contacts(6)

Customers Also Bought



TE Part #1473369-3
SQUIB 11DIA SCR ASSY 8.8MM TYP



TE Part #2286546-2
HSD,HDR ASSY,90DEG,COD B



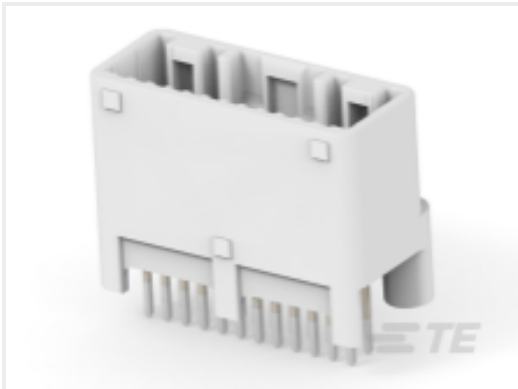
TE Part #1-2236896-5
2POS, MCON 1.2 LL REC SEALED



TE Part #CAT-HPCH5372
High Pin Count Header



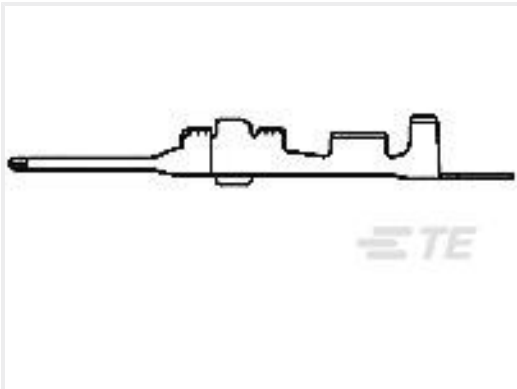
TE Part #1903883-1
0.50 SERIES CONN 16POS PLUG HOUSING ASSY



TE Part #1376111-6
025 24 POS CAP ASSY V



TE Part #1473369-7
SQUIB 11DIA SCR ASSY CODE-A GR



TE Part #917067-6
040-2 TAB CONT S GOLD 22-18



TE Part #1747085-1
0.64 6POS PLUG ASSY

Document



Product Drawings

MALE ASM, 1 POS, VERT, PCB, KEY G

English

CAD Files

3D PDF

3D

Customer View Model

ENG_CVM_CVM_5-2203452-7_D.2d_dxf.zip

English

Customer View Model

ENG_CVM_CVM_5-2203452-7_D.3d_igs.zip

English

Customer View Model

ENG_CVM_CVM_5-2203452-7_D.3d_stp.zip

English

By downloading the CAD file I accept and agree to the [Terms and Conditions](#) of use.

Product Specifications

Application Specification

English