



TE Internal #: 5-2337939-6  
Board-to-Board, 64 Position, 1 mm [.039 in] Centerline, Vertical,  
Black, Signal, -40 – 85 °C [-40 – 185 °F], PCI & PCI Express  
Connectors  
[View on TE.com >](#)

Connectors > PCB Connectors > Card Edge Connectors > PCI & PCI Express Connectors



Connector System: **Board-to-Board**  
Number of Positions: **64**  
PCI Generation: **4**  
Centerline (Pitch): **1 mm [.039 in]**  
Contact Mating Area Plating Material Thickness: **[ 30 µin ]**

Features

Product Type Features

Connector & Contact Terminates To	Printed Circuit Board
Connector System	Board-to-Board
Sealable	No

Configuration Features

Number of Positions	64
PCB Mount Orientation	Vertical
Ejector	Without

Body Features

Primary Product Color	Black
-----------------------	-------

Contact Features

Contact Current Rating (Max)	1.1 A
Contact Underplating Material	Nickel
Contact Mating Area Plating Material	Gold (Au)
Contact Base Material	Copper Alloy
PCB Contact Termination Area Plating Material	Tin
	30 µin

Termination Features

Termination Method to PCB	Surface Mount
---------------------------	---------------



Mechanical Attachment

Connector Mounting Type	Board Mount
-------------------------	-------------

Housing Features

Centerline (Pitch)	1 mm [.039 in]
--------------------	----------------

Dimensions

PCB Thickness (Accepted)	1.57 mm
--------------------------	---------

Usage Conditions

Operating Temperature Range	-40 – 85 °C [-40 – 185 °F]
-----------------------------	----------------------------

Operation/Application

Circuit Application	Signal
---------------------	--------

Industry Standards

Bus Type	PCI Express
PCI Generation	4

Packaging Features

Packaging Method	Box & Tray
------------------	------------

Product Compliance

For compliance documentation, visit the product page on TE.com>

EU RoHS Directive 2011/65/EU	Compliant
EU ELV Directive 2000/53/EC	Compliant
China RoHS 2 Directive MIIT Order No 32, 2016	No Restricted Materials Above Threshold
EU REACH Regulation (EC) No. 1907/2006	Current ECHA Candidate List: JAN 2025 (247) Candidate List Declared Against: JAN 2025 (247) Does not contain REACH SVHC
Halogen Content	Low Halogen - Br, Cl, F, I < 900 ppm per homogenous material. Also BFR/CFR/PVC Free
Solder Process Capability	Not reviewed for solder process capability

Product Compliance Disclaimer

This information is provided based on reasonable inquiry of our suppliers and represents our current actual knowledge based on the information they provided. This information is subject to change. The part numbers that TE has identified as EU RoHS compliant have a maximum concentration of 0.1% by weight in homogenous materials for lead, hexavalent chromium, mercury, PBB, PBDE, DBP, BBP, DEHP, DIBP, and 0.01% for cadmium, or qualify for an exemption to these



limits as defined in the Annexes of Directive 2011/65/EU (RoHS2). Finished electrical and electronic equipment products will be CE marked as required by Directive 2011/65/EU. Components may not be CE marked. Additionally, the part numbers that TE has identified as EU ELV compliant have a maximum concentration of 0.1% by weight in homogenous materials for lead, hexavalent chromium, and mercury, and 0.01% for cadmium, or qualify for an exemption to these limits as defined in the Annexes of Directive 2000/53/EC (ELV). Regarding the REACH Regulation, the information TE provides on SVHC in articles for this part number is based on the latest European Chemicals Agency (ECHA) ‘Guidance on requirements for substances in articles’ posted at this URL: <https://echa.europa.eu/guidance-documents/guidance-on-reach>

Compatible Parts

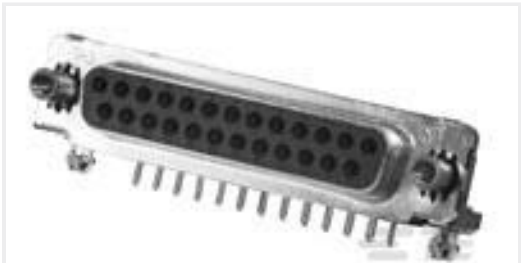


TE Part # 1734774-1  
PCI EXP 3.1L 36 POS WHT G/F

Customers Also Bought



TE Part #213603-3  
5015 PIN,18-14,30AU DUP,STRIP



TE Part #5745781-4  
09 MSFL RCPT RA 318 (IN,FM)



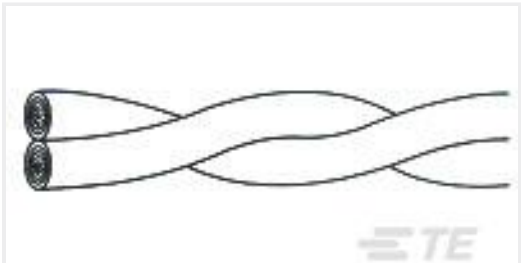
TE Part #4-2337939-7  
PCIE GEN4 CON,SMT,98POS,15u", MYLAR,HT



TE Part #5227161-6  
RTANG JK W/MTG PINS, BNC PCB



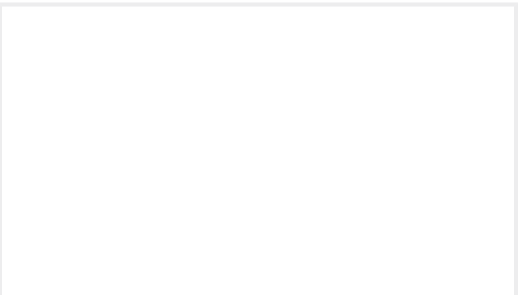
TE Part #GA10K3A1AM  
DISCRETE 10K, +/-0.05C FROM 32C to 44C



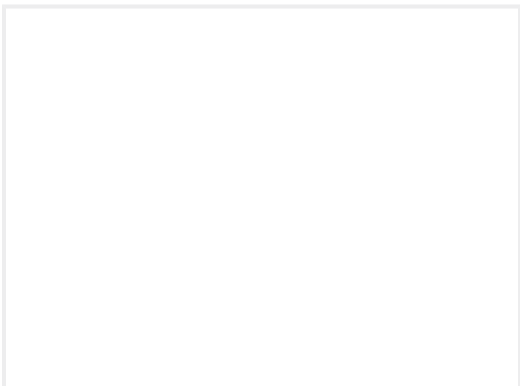
TE Part #316127-000  
55A0121-20-0/9



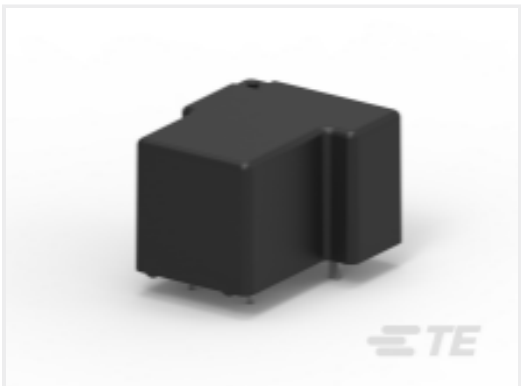
TE Part #5747840-3  
HD-20 PLUG RA .318 FMS BD-LK 4



TE Part #22-0262-031-P00  
723 HTEC FRONT PART IG3, SPEEDTEC



TE Part #40-A484-000-P00  
723 HTEC INSULATION INSERT, 5-PIN



TE Part #1423029-5  
T9AS1D17-12

Documents



CAD Files

3D PDF

3D

Customer View Model

ENG\_CVM\_CVM\_5-2337939-6\_A.2d\_dxf.zip

English

Customer View Model

ENG\_CVM\_CVM\_5-2337939-6\_A.3d\_igs.zip

English

Customer View Model

ENG\_CVM\_CVM\_5-2337939-6\_A.3d\_stp.zip

English

By downloading the CAD file I accept and agree to the [Terms and Conditions](#) of use.

Product Specifications

Product Specification

English

Product Specification

English

Agency Approvals

UL Report

English

UL Report

English