



Energy & Power > Power Cable Accessories > Joints & Splices



Installation Technology: **Power Gel**

Product Availability: **Americas**

Installation Instruction: **English**

Joints & Splice Product Type: **H-Frame Splice Closure**

Voltage Class: **≤ 1 kV**

Features

Product Type Features

Adhesive Coating	With
Material System	Polypropylene Cover
Installation Technology	Power Gel
Joints & Splice Product Type	H-Frame Splice Closure
Closing Method	Snap

Configuration Features

Number of Main Wires (Max)	1
----------------------------	---

Electrical Characteristics

Voltage Class	≤ 1 kV
---------------	--------

Body Features

Primary Product Color	Black
-----------------------	-------

Mechanical Attachment

Mechanical Reinforcement	No
--------------------------	----

Dimensions

Compatible Conductor Cross-Section Range	185 mm ²
Compatible Conductor Range	350 – 350 AWG/kcmil
Compatible Cable Cross-Section - Main (Max)	185 mm ²



Compatible Cable Cross-Section - Main (Min)	185 mm²
---	---------

Usage Conditions

Fluid Resistance Type	Hydrocarbons, Transformer Oil
Environmental Resistance	Contaminated Water, Moisture, Rain, Salt Water, Weathering

Operation/Application

Mechanical Resistance	Against Mechanical Impact
UV-Stabilized	Yes
Marine-Offshore-Shipbuilding Certified	No
Thermal Resistance	Applicable for Low Temperatures, Applicable for High Temperatures, Flame-Retardant

Industry Standards

Compatible With Approved Standards Products	ANSI C119.1
---	-------------

Product Availability

Product Availability	Americas
----------------------	----------

Packaging Features

Packaging Method	Pieces in Polybag
Packaging Quantity	6

Other

Product Use	PowerGel-filled box for LV underground & overhead splices.
Installation Instruction	English

Product Compliance

For compliance documentation, visit the product page on TE.com>

EU RoHS Directive 2011/65/EU	Compliant
EU ELV Directive 2000/53/EC	Compliant
China RoHS 2 Directive MIIT Order No 32, 2016	No Restricted Materials Above Threshold
EU REACH Regulation (EC) No. 1907/2006	Current ECHA Candidate List: JAN 2025 (247) Candidate List Declared Against: JUNE 2024 (241) Does not contain REACH SVHC
Halogen Content	Low Halogen - Br, Cl, F, I < 900 ppm per



homogenous material. Also BFR/CFR/PVC Free

Solder Process Capability

Not applicable for solder process capability

Product Compliance Disclaimer

This information is provided based on reasonable inquiry of our suppliers and represents our current actual knowledge based on the information they provided. This information is subject to change. The part numbers that TE has identified as EU RoHS compliant have a maximum concentration of 0.1% by weight in homogenous materials for lead, hexavalent chromium, mercury, PBB, PBDE, DBP, BBP, DEHP, DIBP, and 0.01% for cadmium, or qualify for an exemption to these limits as defined in the Annexes of Directive 2011/65/EU (RoHS2). Finished electrical and electronic equipment products will be CE marked as required by Directive 2011/65/EU. Components may not be CE marked. Additionally, the part numbers that TE has identified as EU ELV compliant have a maximum concentration of 0.1% by weight in homogenous materials for lead, hexavalent chromium, and mercury, and 0.01% for cadmium, or qualify for an exemption to these limits as defined in the Annexes of Directive 2000/53/EC (ELV). Regarding the REACH Regulation, the information TE provides on SVHC in articles for this part number is based on the latest European Chemicals Agency (ECHA) ‘Guidance on requirements for substances in articles’ posted at this URL: <https://echa.europa.eu/guidance-documents/guidance-on-reach>

Compatible Parts

TE Part # 166533-000
GHFC-1-90(B100)

TE Part # 348333-000
GHFC-2-90(B100)

TE Part # C48562-000
GHFC-2.5-90(B300)

TE Part # 765669-000
GHFC-1-90(B10)

TE Part # 294925-000
GHFC-2-90(B10)

TE Part # 629995-000
GHFC-3-90(B18)

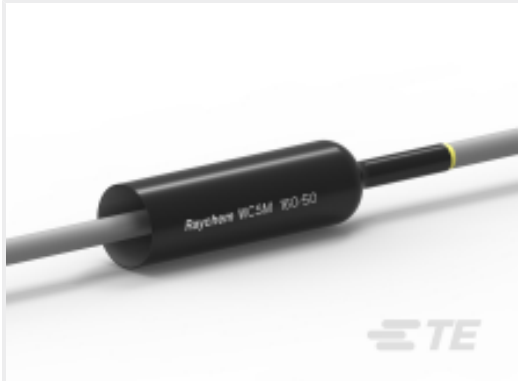
Also in the Series | RAYCHEM GHFC

Joints & Splices(7)

Customers Also Bought



TE Part #294925-000
[GHFC-2-90\(B10\)](#)



TE Part #CAT-WCSM
[Thick-Wall Heat Shrink Tubing](#)



TE Part #765669-000
[GHFC-1-90\(B10\)](#)

Documents

Datasheets & Catalog Pages

[GHFC-GEL-H-FRAME-CLOSURE-CABLE-ACCESSORIES](#)

English

[GHFC-GEL-H-FRAME-CLOSURE-CABLE-ACCESSORIES](#)

Instruction Sheets

[Instruction Sheet \(U.S.\)](#)

English